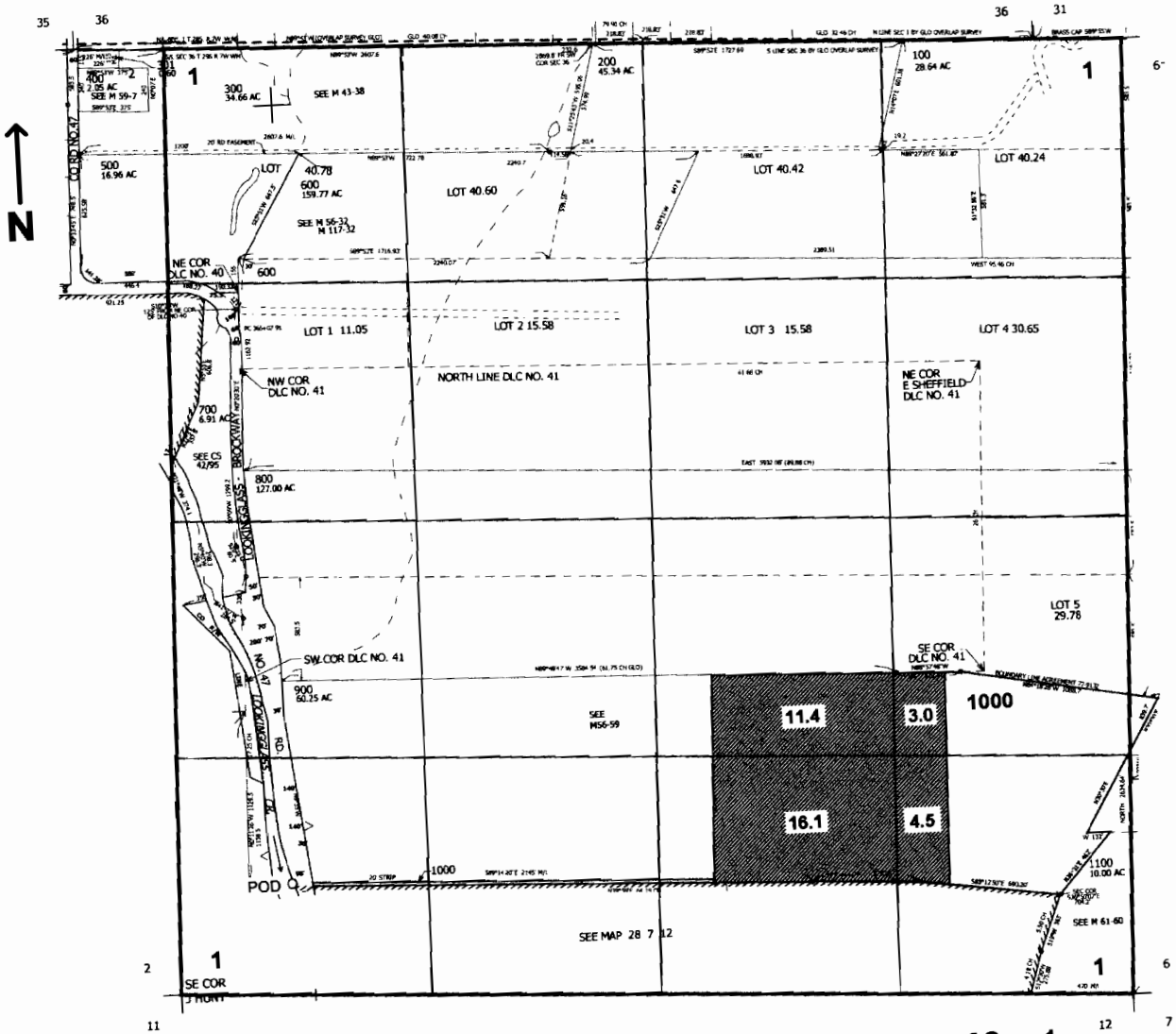


SEC.1 T.28S. R.7W. W.M.
DOUGLAS COUNTY
Scale: 1" = 1000'



POD is located 620 ft. N. and 620 ft. E. from the SW corner of Sec. 1

RECEIVED
MAY 08 2008
WATER RESOURCES DEPT
SALEM OREGON

Map No 5-87169