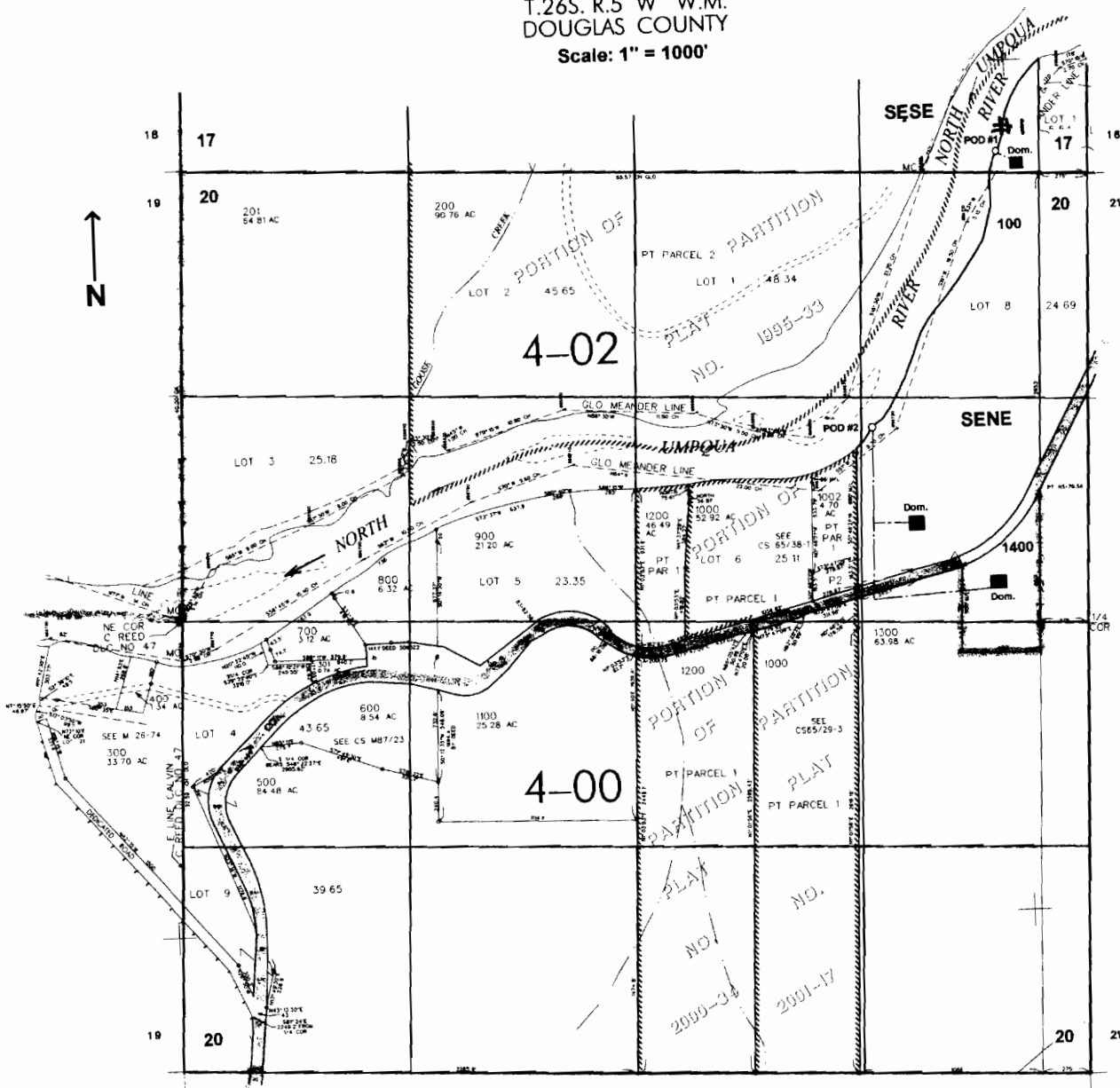


T.26S. R.5 W. W.M.
DOUGLAS COUNTY
Scale: 1" = 1000'



POD #1 - 115 ft. N. and 520 ft. W.)
from the NE corner of Sec. 20
POD #2 - 1500 ft. S. and 1280 ft. W.)

RECEIVED

OCT 02 2007

WATER RESOURCES DEPT
SALEM, OREGON

App no 5-87001