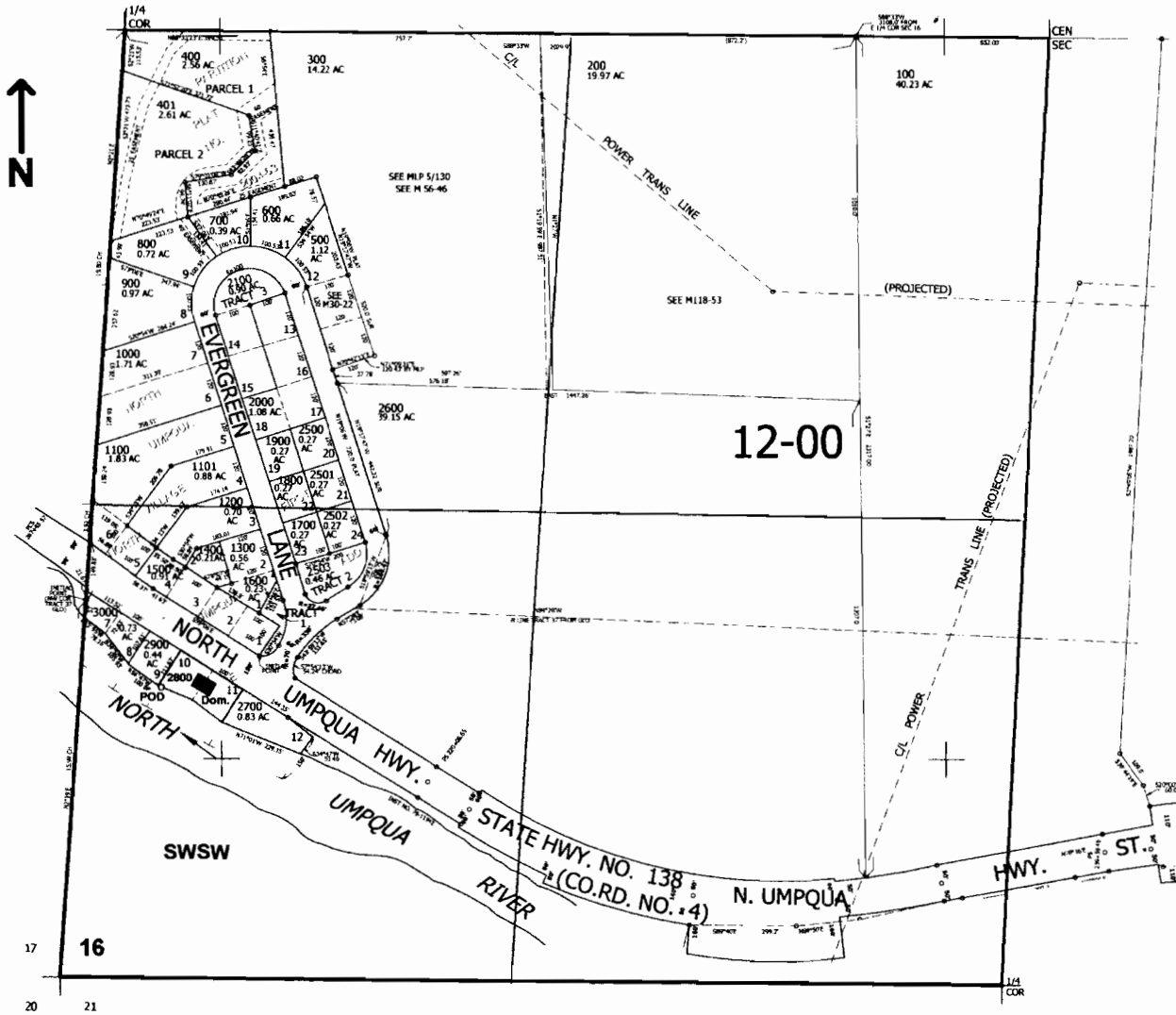


SW1/4 SEC.16 T.26S. R.2W. W.M.
DOUGLAS COUNTY
Scale: 1"=500'



POD is located 800 ft. N. and 275 ft. E. from the SW corner of Sec. 16

RECEIVED
SEP 27 2007
WATER RESOURCES DEPT
SALEM OREGON

App no S-86996