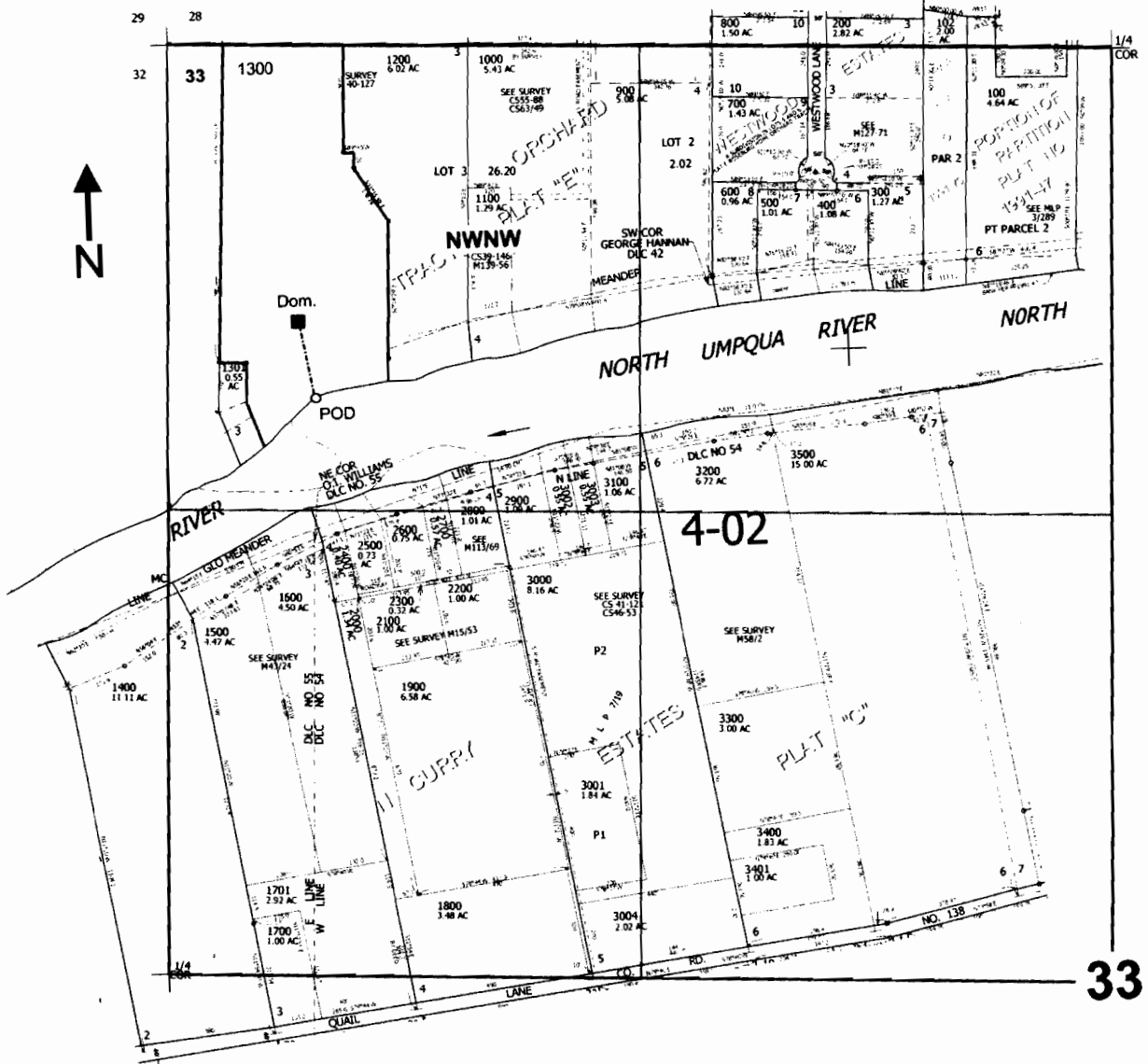


NW1/4 SEC.33 T.26S. R.6W. W.M.
DOUGLAS COUNTY
Scale: 1" = 500'



POD is located 990 ft. S. and 415 ft. E. from the NW corner of Sec. 33

RECEIVED
AUG 07 2008
WATER RESOURCES DEPT.
SALEM, OREGON

1. 1. 687251