

THIS MAP WAS PREPARED FOR  
ASSESSMENT PURPOSE ONLY

SECTION 91 T.11N. R.23W. W.M.  
TILLAMOOK COUNTY  
1320'

IN 9 31

THIS MAP  
ASSESSOR

SEE MAP IN 9

CANCELLED NO.  
200

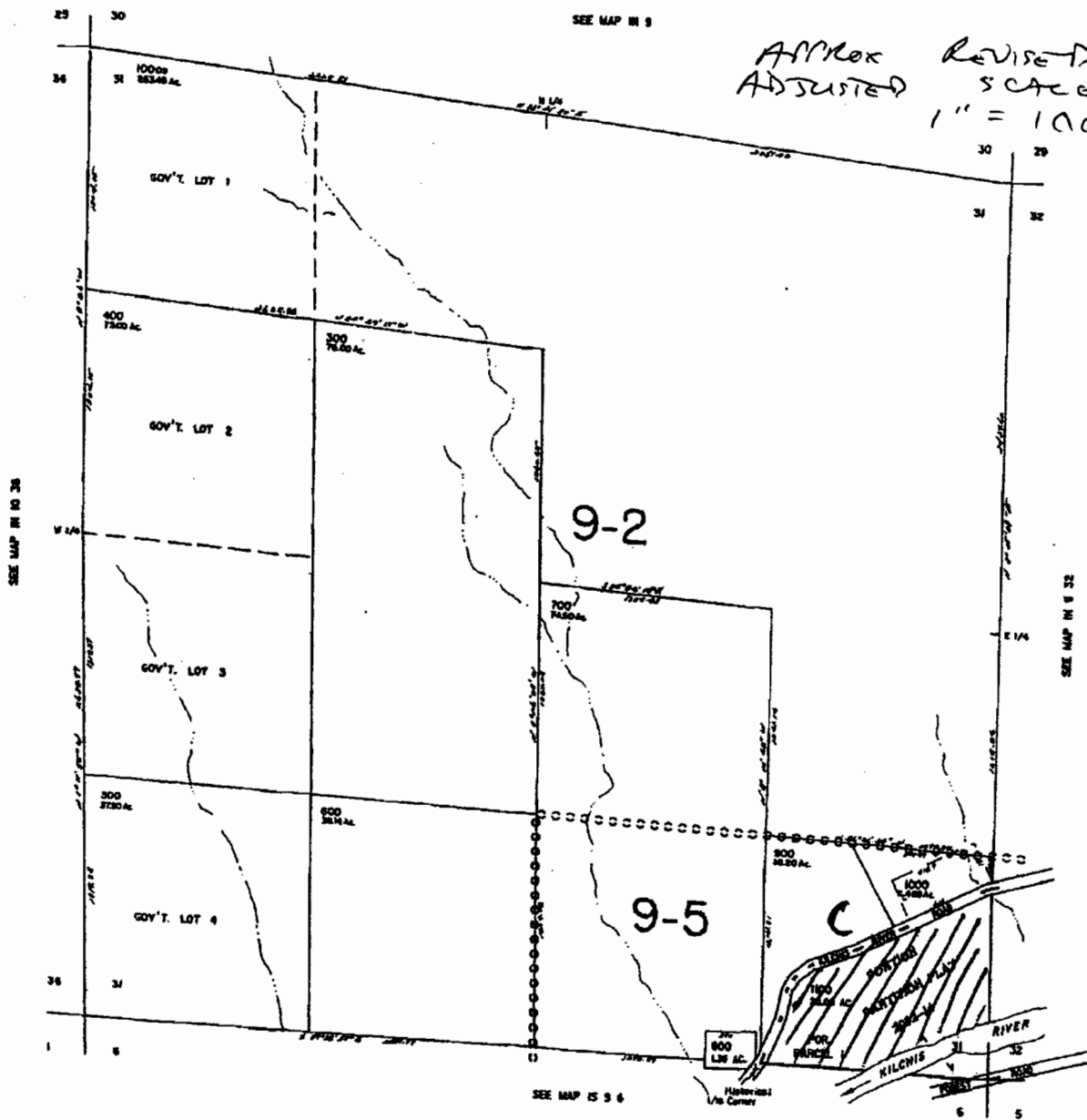
APPROX REVISED  
ADJUSTED SCALE  
1" = 1000 FEET.

RECEIVED

NOV 24 2000

72

72



SEE MAP IN 9 6

IN 9 31

REVISED 10/21/02. KA

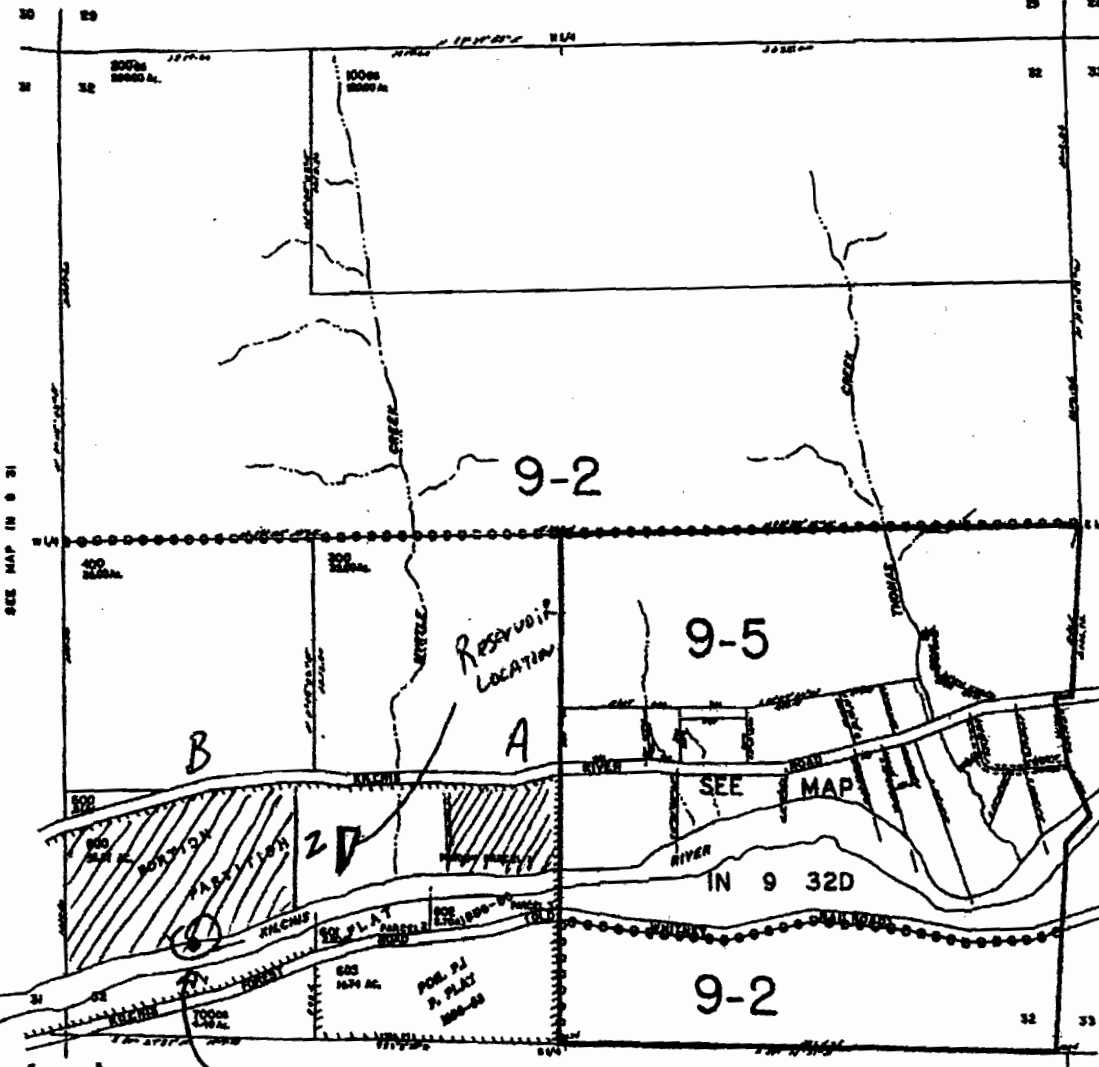
THIS MAP WAS PREPARED FOR  
ASSESSMENT PURPOSE ONLY

SECTION 32 T.1N. R.9W. W.M.  
TILLAMOOK COUNTY

IN 9 32

AMCOX COLLECTED  
REVISED SCALE  
1" = 1000 FEET

SEE MAP IN 9



CANCELLED NO.

- 800
- 801
- 802
- 803
- 804
- 805
- 806
- 807
- 808
- 809
- 810
- 811
- 812
- 813
- 814
- 815
- 816
- 817
- 818
- 819
- 820
- 821
- 822
- 823
- 824
- 825
- 826
- 827
- 828
- 829
- 830

SEE MAP IN 9 32

Z-Reservoir Location-

Acres to be irrigated

A - 6.2 acres

B - 23.8 acres

C - 20 acres

Point of Diversion - 300 ft N. + 1700' E SE/SW 32 IN 9W

IN 9 32

REVISED 06/26/01, LA