

THIS MAP WAS PREPARED FOR
ASSESSMENT PURPOSE ONLY

SECTION 8 28S. R.13W. W.M.
COOS COUNTY

28 13
& INDEX

CANCELLED

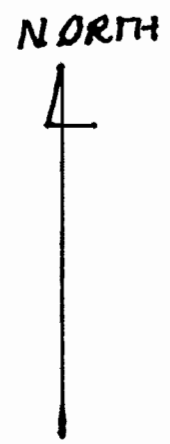
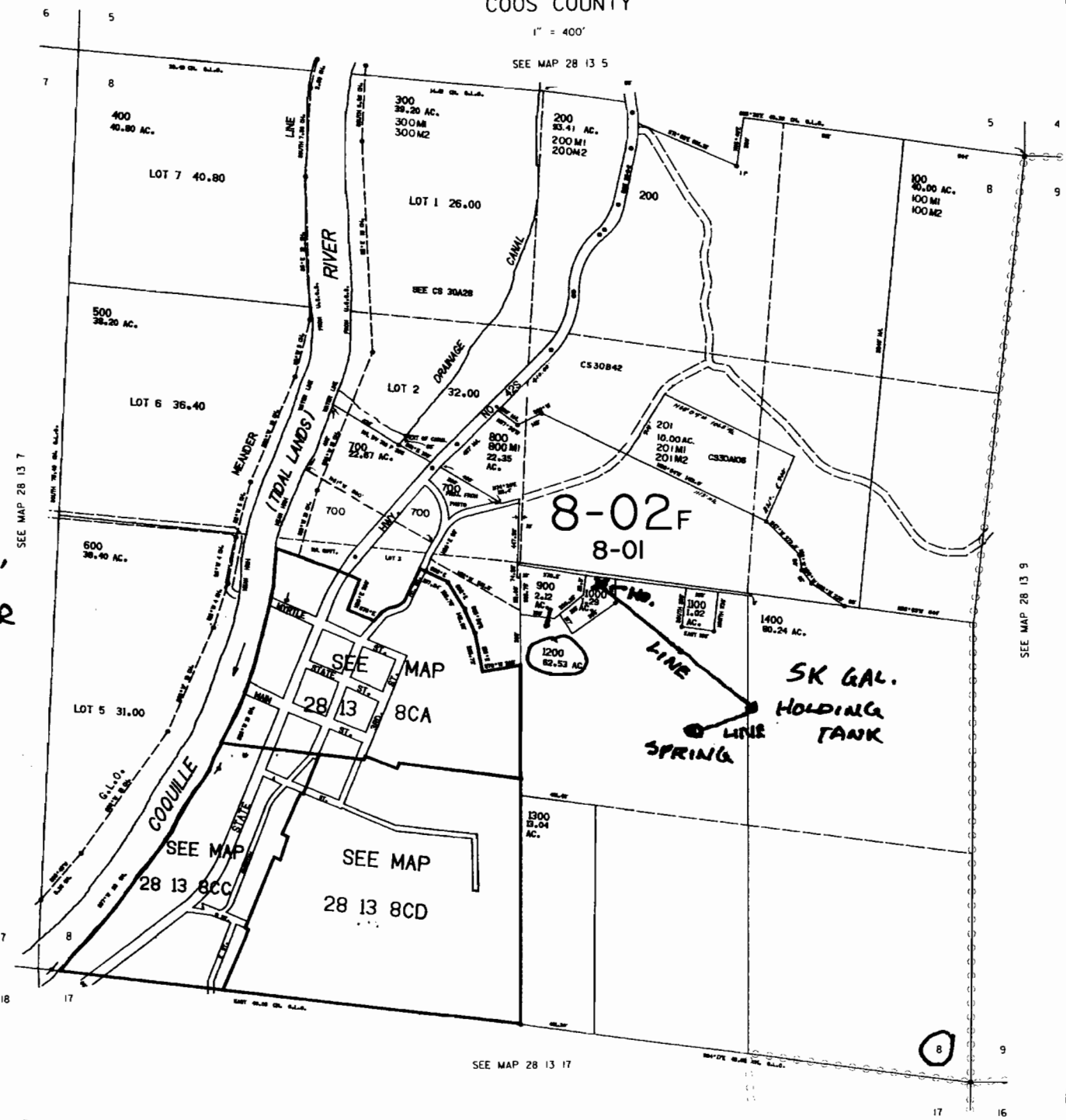
1" = 400'

SEE MAP 28 13 5

T.28S. R.13W.
SEC.8
NW SE
SCALE 1"=400'

SPRING-
P.O.D. TL 1200
LOCATED
600' EAST & 575'
SOUTH OF CENTER
OF SEC.8

~~1200~~ 1000
P.O.U. TL. ~~900~~
HOUSE-LOCATED
550' E. AND 50'
S. OF CENTER OF
SEC.8.



RECEIVED

NOV 26 2007

WATER RESOURCES DEPT
SALEM, OREGON

DATE

28 13 8
& INDEX

APPNO S-87045
APPROVED BY M. J. [unclear]