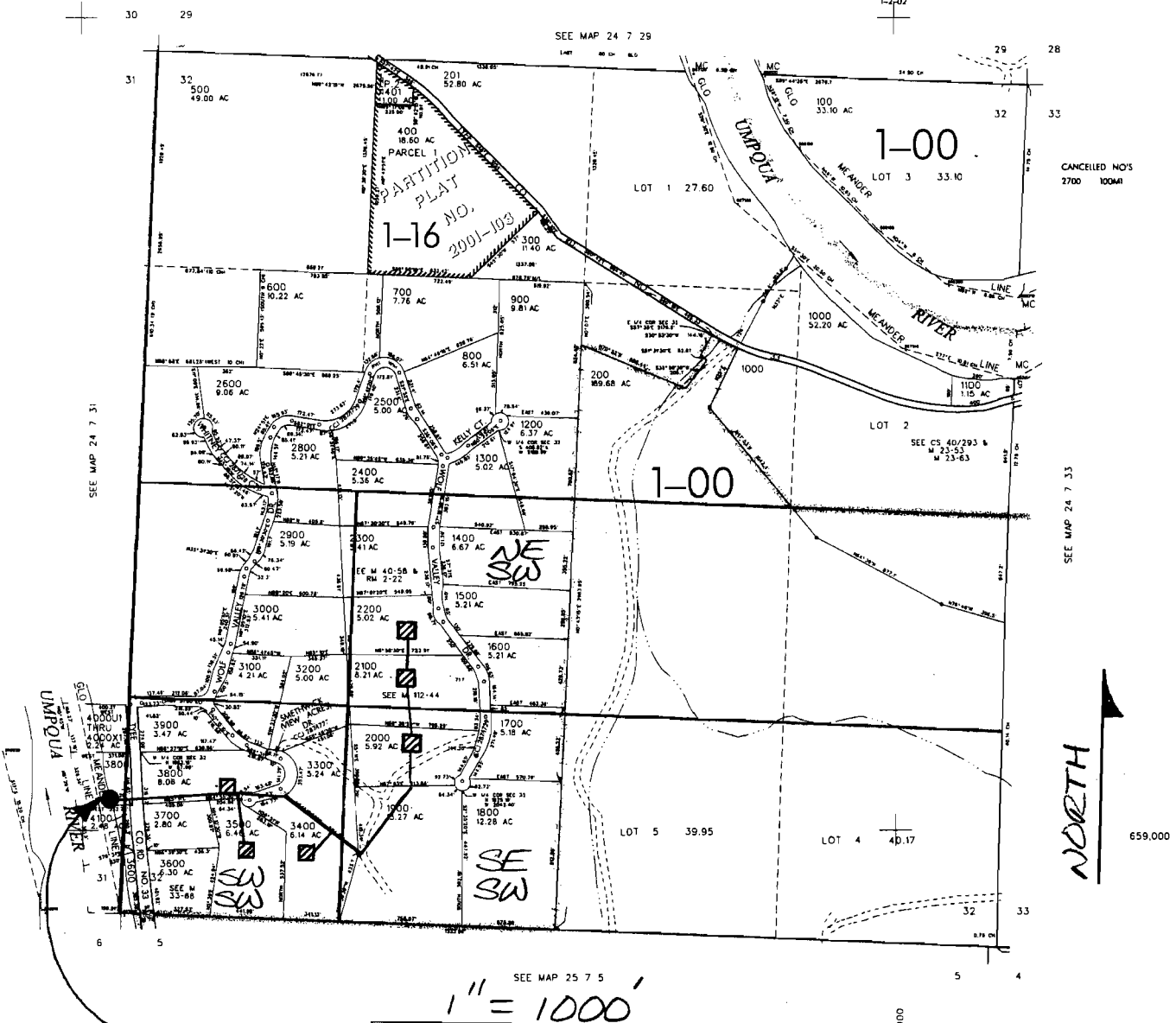


THIS MAP WAS PREPARED FOR ASSESSMENT PURPOSE ONLY

SEC. 32 T.24S. R. 7W W.M.
DOUGLAS COUNTY

24 7 32

REVISED ON
1-2-02



POD LOCATED 700' NORTH
AND 100' WEST OF SE
CORNER SECTION 31 BEING
WITHIN SE 1/4 SE 1/4, SECTION 31,
T24S, R7W.

NESW = .33 ACRES
SESW = .17 ACRES
SWSW = .50 ACRES

RECEIVED

APR 17 2008

WATER RESOURCES DEPT
SALEM OREGON

App No S-87148