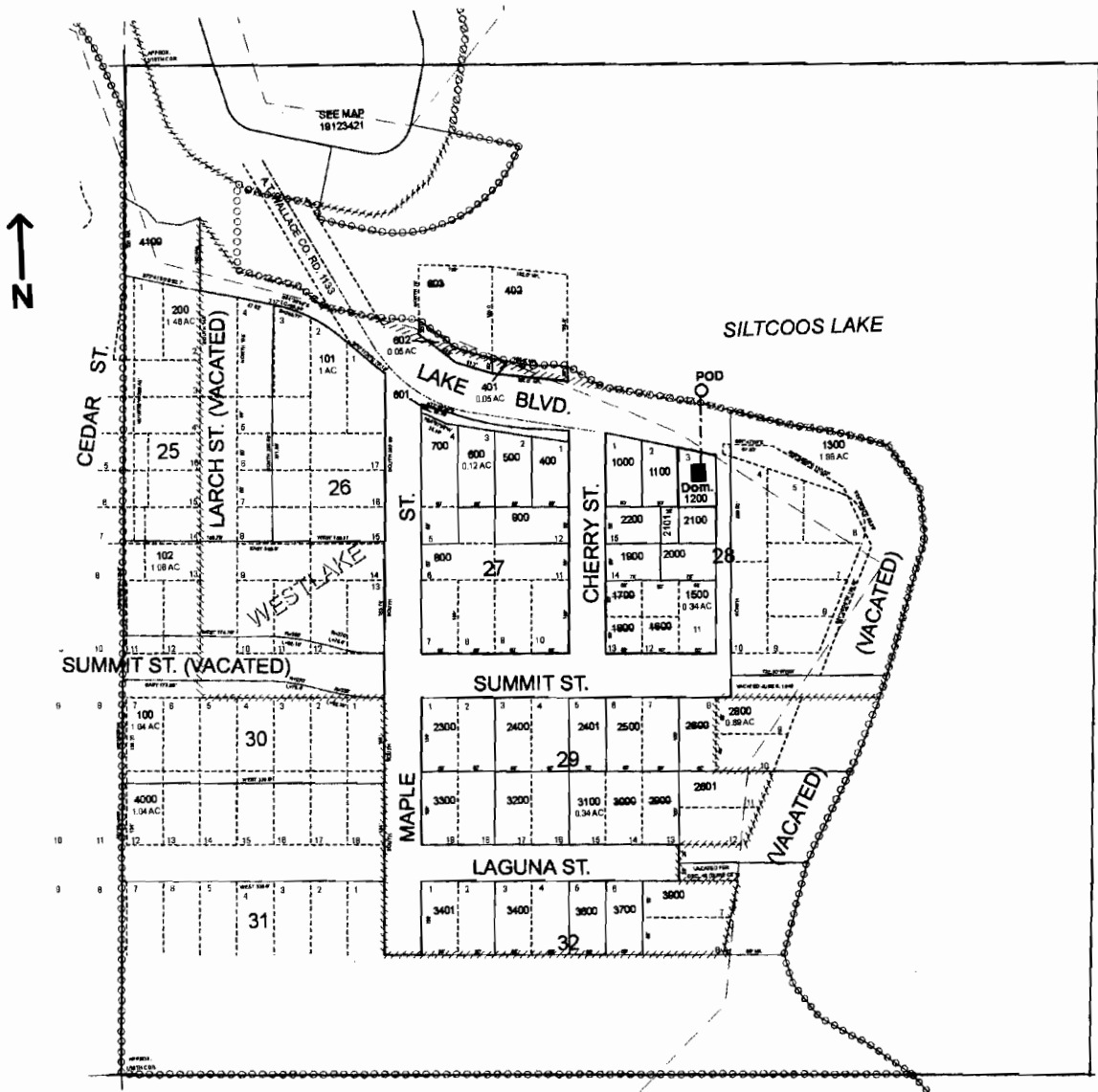


SW 1/4 NE 1/4 SEC.34 T.19S. R.12W. W.M.  
Lane County  
Scale: 1" = 250'



POD is located 445 ft. S. and 785 ft. E. from the NW corner of the SW1/4 NE 1/4

**RECEIVED**

APR 26 2006

WATER RESOURCES DEPT  
SALEM OREGON