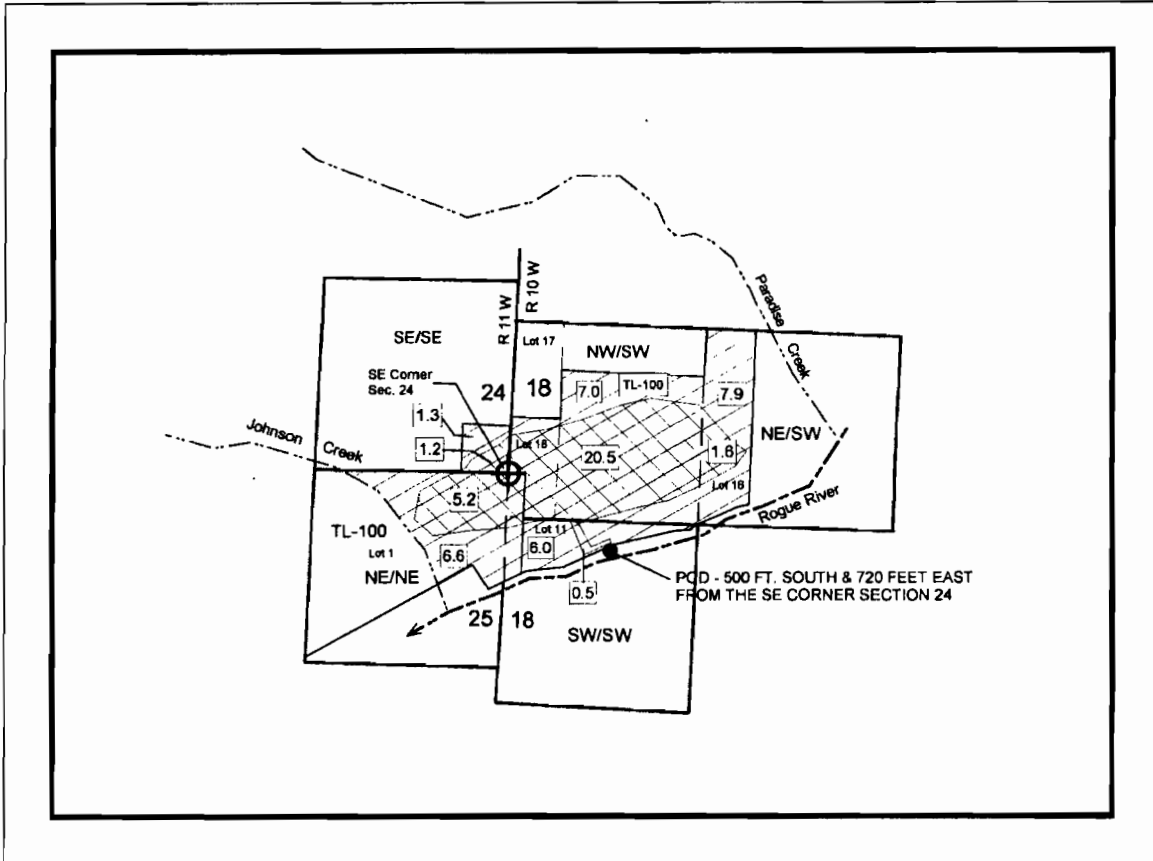
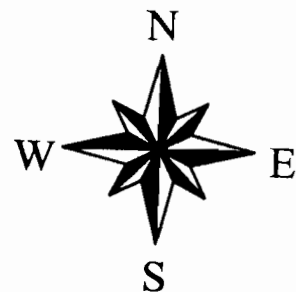
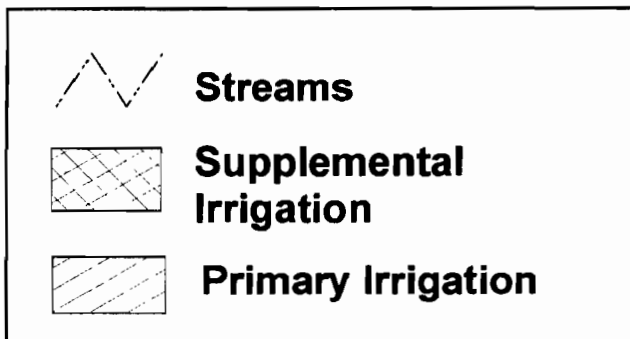


**T. 33 S., R 10 & 11 W., W.M.
PARADISE LODGE
CURRY COUNTY**



Scale 1 inch = 1320 feet



**Application Map for use of stored water from Lost Creek Lake
For John Schleining (Paradise Lodge).**

RECEIVED

DEC 19 2007

WATER RESOURCES DEPT
SALEM, OREGON

August 15, 2006
Amended 12/19/2007
n.e.d.

S-87036