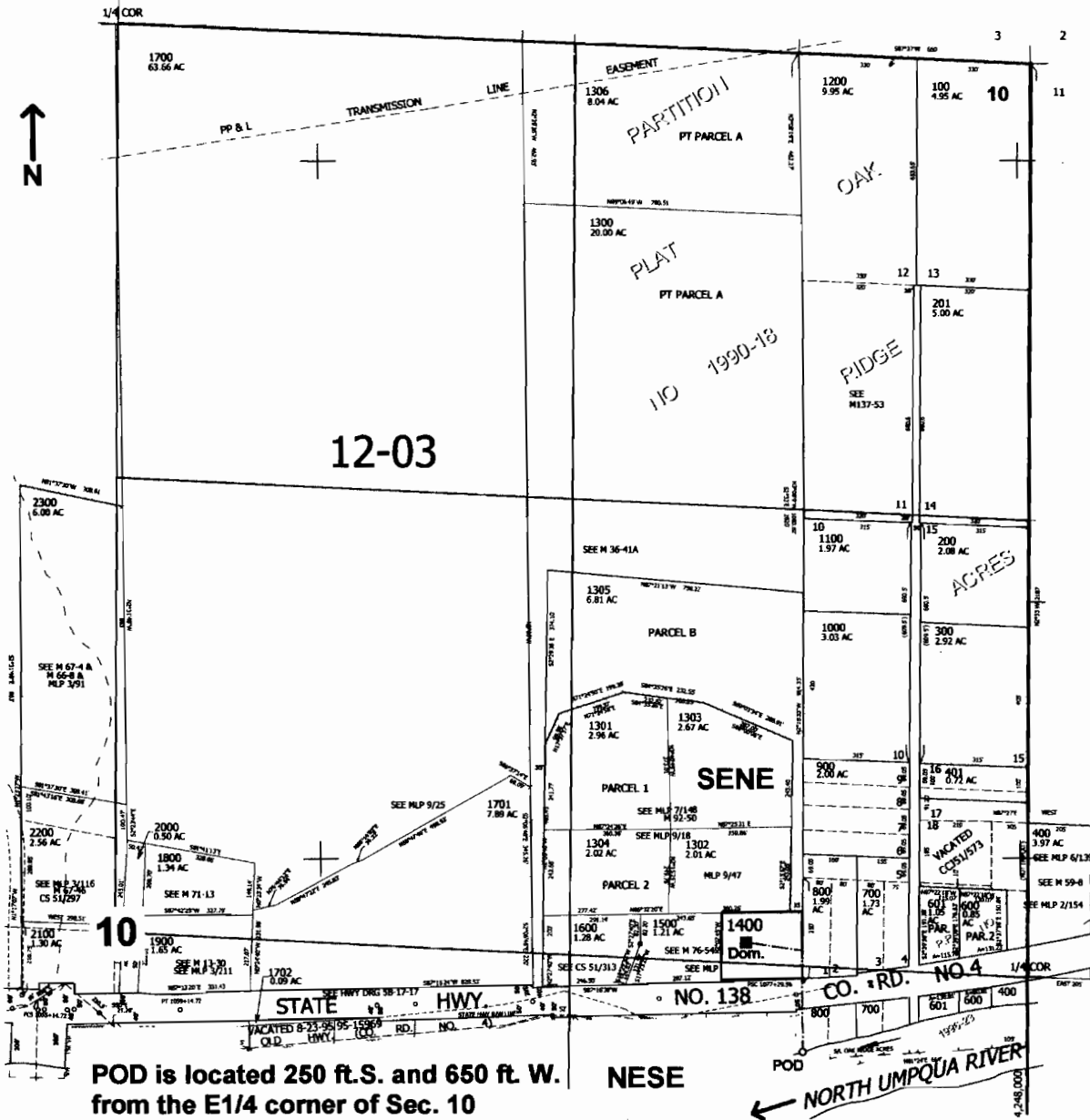


NE1/4 SEC.10 T.26S. R.3W. W.M.
DOUGLAS COUNTY
Scale: 1"=500'



POD is located 250 ft.S. and 650 ft. W. from the E1/4 corner of Sec. 10

NESE

← NORTH UMPQUA RIVER

RECEIVED

AUG 13 2008

WATER RESOURCES DEPT.
SALEM, OREGON

APPNO 5-87254