

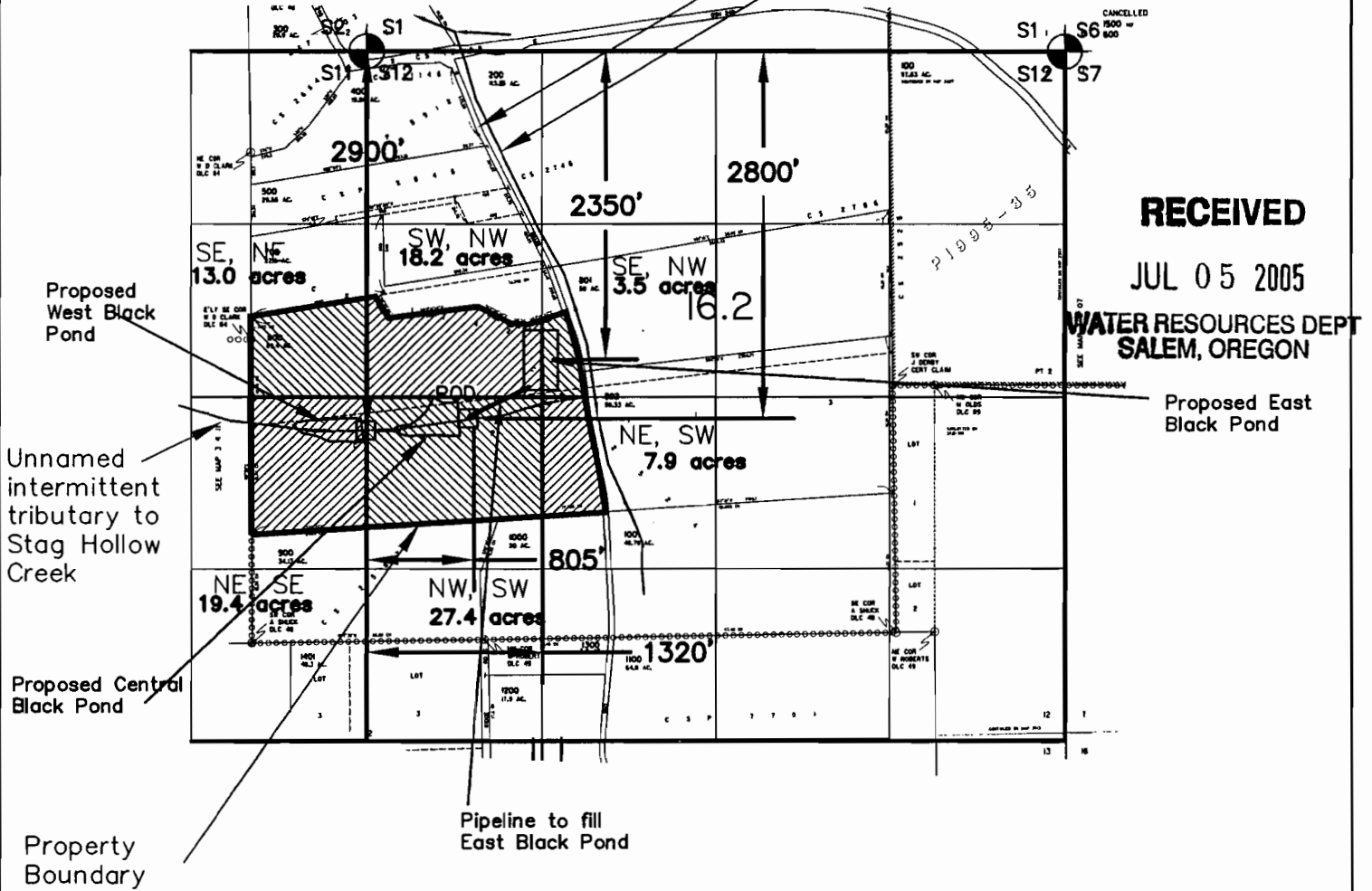
Water Rights Application Map

LOCATED IN TAX LOT 800, SECTION 12, T3S, R4W, WM.
YAMHILL COUNTY, OREGON



Stag Hollow Road

Stag Hollow Creek






RECEIVED

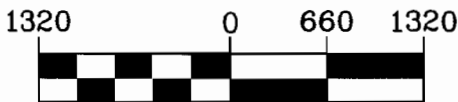
JUL 05 2005

**WATER RESOURCES DEPT
SALEM, OREGON**

Application done for:
Black Family Vineyards

LEGEND:

-  Approximate Point of Diversion Locations
-  Section corner used to scale tax assessor map and then USGS quad map.
-  Maximum acres to be irrigated



1 inch = 1320 ft.

Distances based on scaled tax assessor map and USGS topo map.

Appl. S-86370



Project: 305-2-048
Drawing: 3052048A
By: URSTADT
Date: 25 MAY 2005

Permit Amendment Map

LOCATED IN TAX LOT 800, SECTION 12, T3S, R4W, WM.
YAMHILL COUNTY, OREGON

Reason for Amendment: Change Place of Use for
R-14222 & R-14236



POD for R-14222

Stag Hollow Road

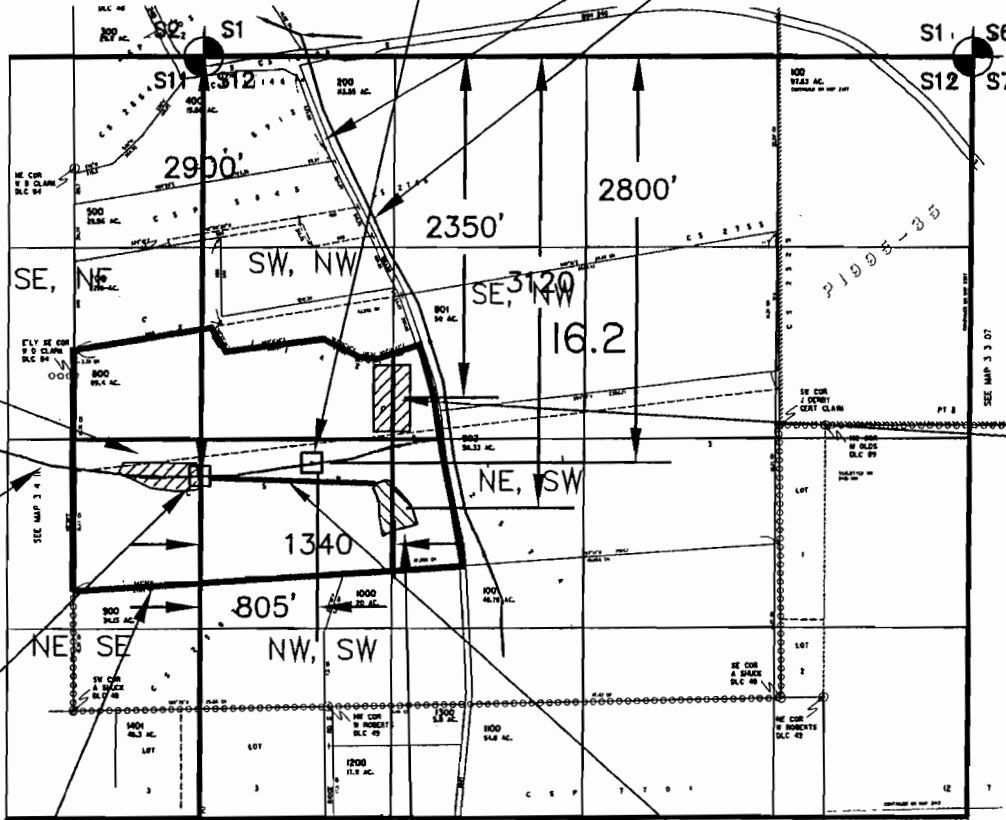
Stag Hollow Creek

(From) 5 AF of Permitted West Black Pond:
Appl. R-86369,
Permit R-14236,
9AF

Unnamed intermittent tributary to Stag Hollow Creek

POD for West Pond (no change)



Property Boundary



(From) Permitted East Black Pond:
Appl. R-86367,
Permit R-14222,
15AF

(To) Location of New East Pond = 15 + 5 AF.

LEGEND:

-  Approximate Point of Diversion Locations
-  Section corner used to scale tax assessor map and then USGS quad map.



From

T 10112



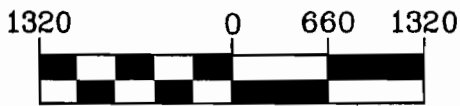
To

Application done for:
Black Family Vineyards

RECEIVED

MAR 03 2006

WATER RESOURCES DE.
SALEM, OREGON



1 inch = 1320 ft.

Distances based on scaled 10112 tax assessor map and USGS topo map.

Certified Water Right Examiner
#385

Eric A. Urstadt

Eric A. Urstadt
May, 11 1994

STATE OF OREGON

EXPIRES 6/30/2006

Stuntzner

Engineering & Forestry, LLC

Project: 305-2-048
Drawing: 3052048J4
By: URSTADT
Date: 1 MAR 2006