

Application to Use Surface Water - POU #1, #2
 POB #1 (site #1) / Reservoir location - 2,040' S. + 652' W.
 from the North 1/4 Corner of T.5N., R.27E., Sec 20
 SE NW. Taxlot 100 - Morrow Co
 POB #2 (site #2) / Reservoir location - 760' S. + 1,180' W. from
 the NE Corner of T.5N., R.27E., Sec 20 NENE.
 Taxlot 100 - Morrow Co.

POU Acres by 1/4 1/4 & Tax Lot

• 4 ac SE NW TL100	POB #1
• 2.7 ac NENE TL100	POB #2
• 9 ac NW NE TL100	POB #2

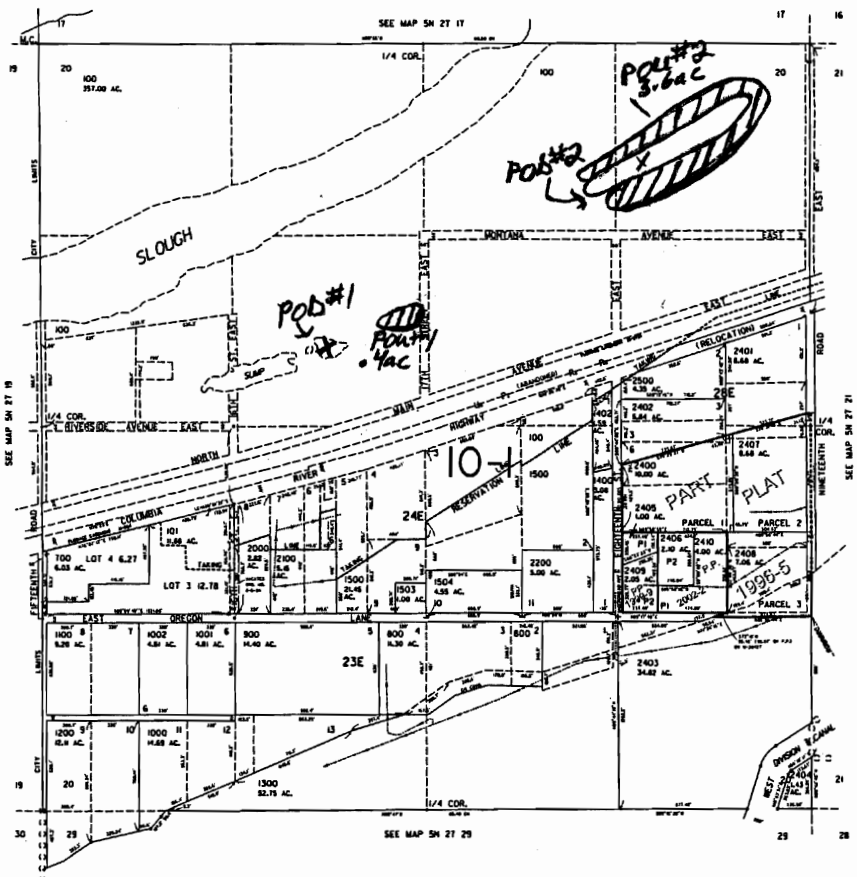
Key [X] POB
 [||||] POU

THIS MAP WAS PREPARED FOR
 ASSESSMENT PURPOSE ONLY
 SCALE IN FEET
 0 100 200 300 400 500 600 700 800

SECTION 20 T.5N. R.27E. W.M.
 MORROW COUNTY

↑
 ↑
 ↑
 1" = 1,320'

5N 27 20



CANCELLED
 NUMBERS
 T.L. 200
 T.L. 300
 T.L. 400
 T.L. 500
 T.L. 600
 T.L. 700
 T.L. 800
 T.L. 900
 T.L. 1000
 T.L. 1100
 T.L. 1200
 T.L. 1300
 T.L. 1400
 T.L. 1500
 T.L. 1600
 T.L. 1700
 T.L. 1800
 T.L. 1900
 T.L. 2000
 T.L. 2100
 T.L. 2200
 T.L. 2300
 T.L. 2400

Revised
 11/9/2007, DBJ
 5N 27 20

RECEIVED

FEB 13 2008

WATER RESOURCES DEPT
 SALEM OREGON

S-87086

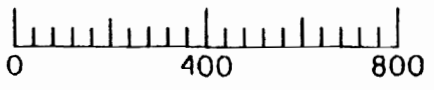


SECTION 21 T.5
MORROW

1" =

THIS MAP WAS PREPARED FOR
ASSESSMENT PURPOSE ONLY

1" = 400'



SCALE IN FEET

Application to Use Surface Water - POU #3

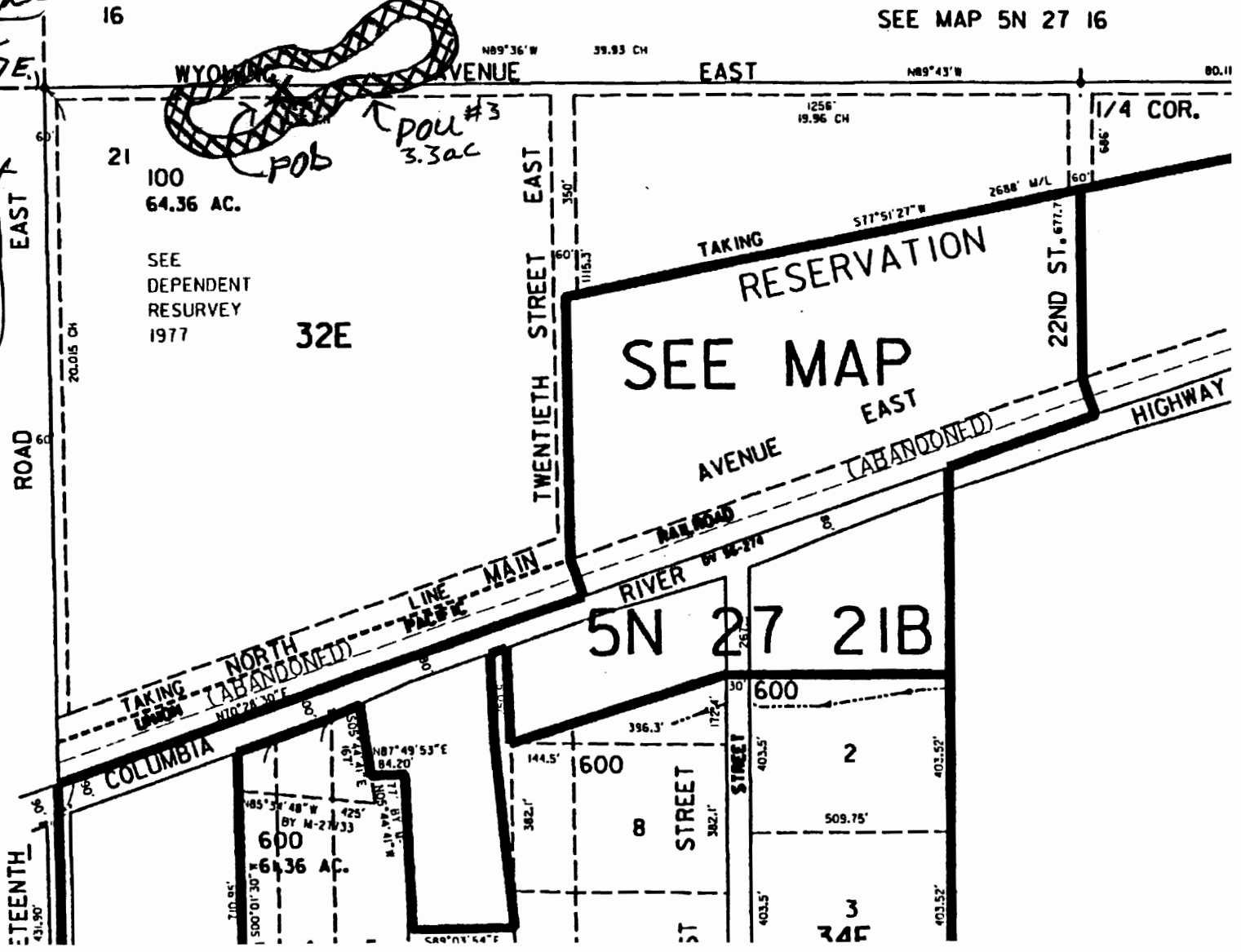
POB (Site #3) Reservoir location -

715' E. + 60' S. from the
NW Corner of T.5N., R.27E.,
Sec 21 NW NW, Tax Lot
100 - Malcom Co

POU Acres by 1/4 1/4 d. Taxlot

2.475 ac SWSW Sec 16
T.5N., R.27E., WM
TL 101
.825 ac NW NW sec 21
TL 100

Key POB
 POU



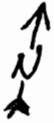
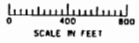
RECEIVED
FEB 13 2008
WATER RESOURCES DEPT
SALEM, OREGON

5-87086

THIS MAP WAS PREPARED FOR ASSESSMENT PURPOSE ONLY

SECTION 16 T.5N. R.27E. W.M.
MORROW COUNTY

5N 27 16

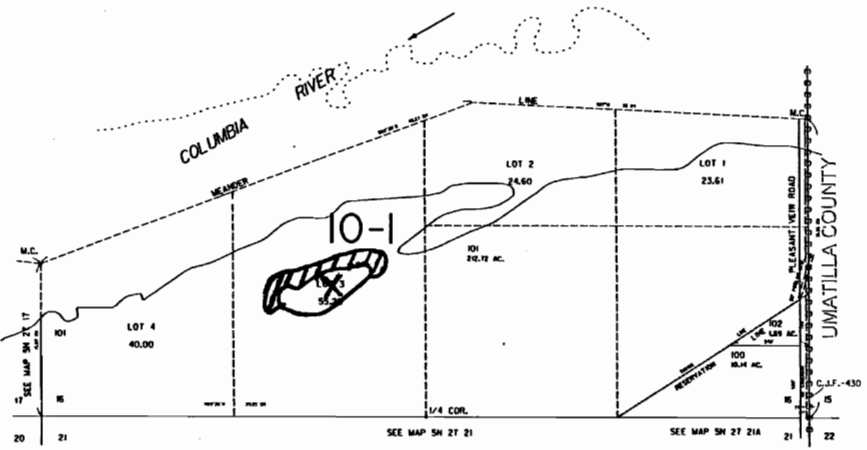


1" = 1,320'

RECEIVED

FEB 13 2008

WATER RESOURCES DEPT
SALEM, OREGON



Revised
8/12/2005, KH
5N 27 16

Application to Use Surface Water - POU #4
POB #4 (site #4) / Reservoir location - 1,887' E. + 861' N. from
the SW Corner of T.5N., R.27E., Sec 16 SE SW Tax lot
101 - Morrow Co
POU Acres by 1/4 1/4 & Tax lot
1 ac SE SW TR 101

Key [X] POB
[Hatching] POU

S-87086