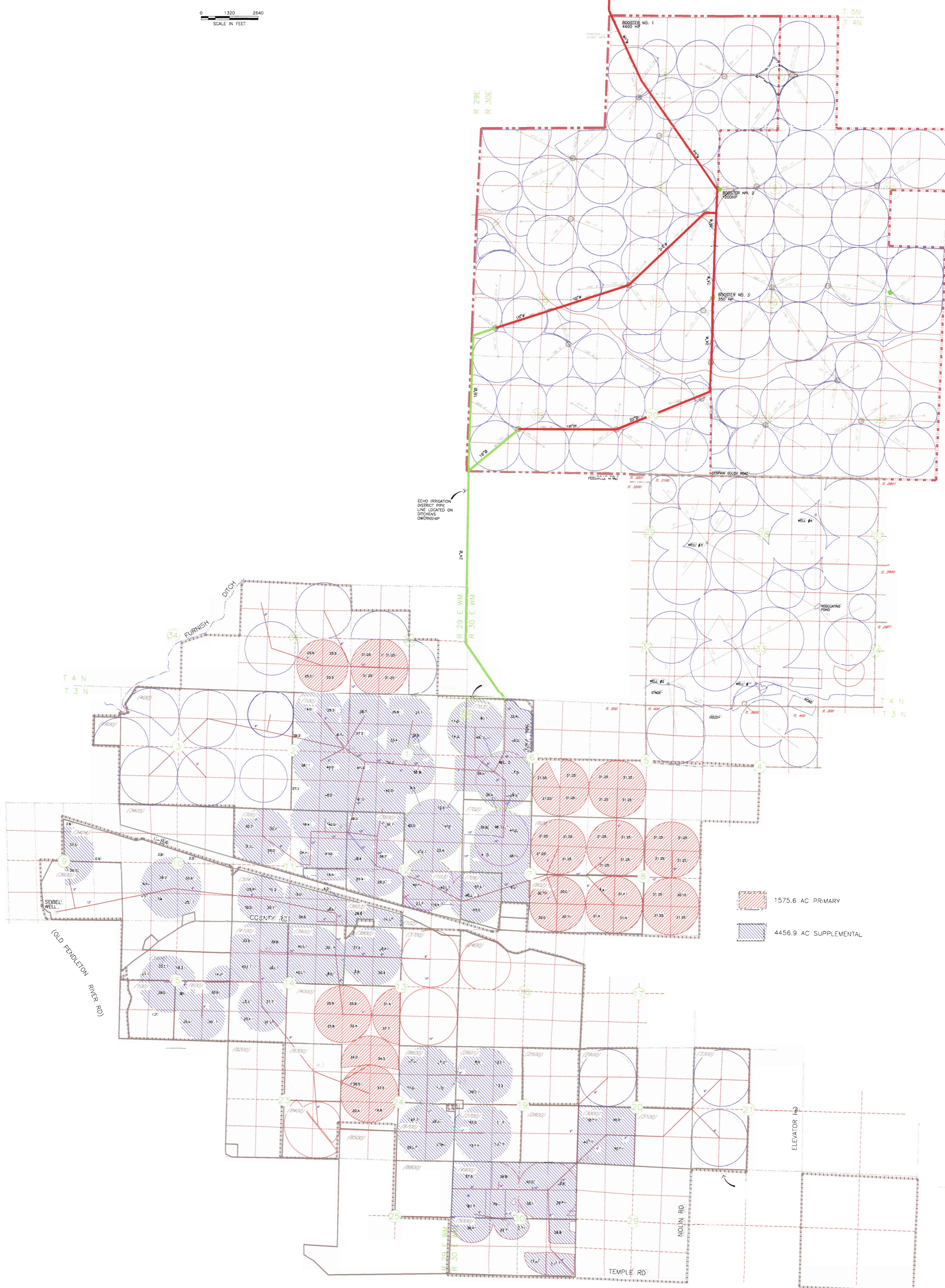
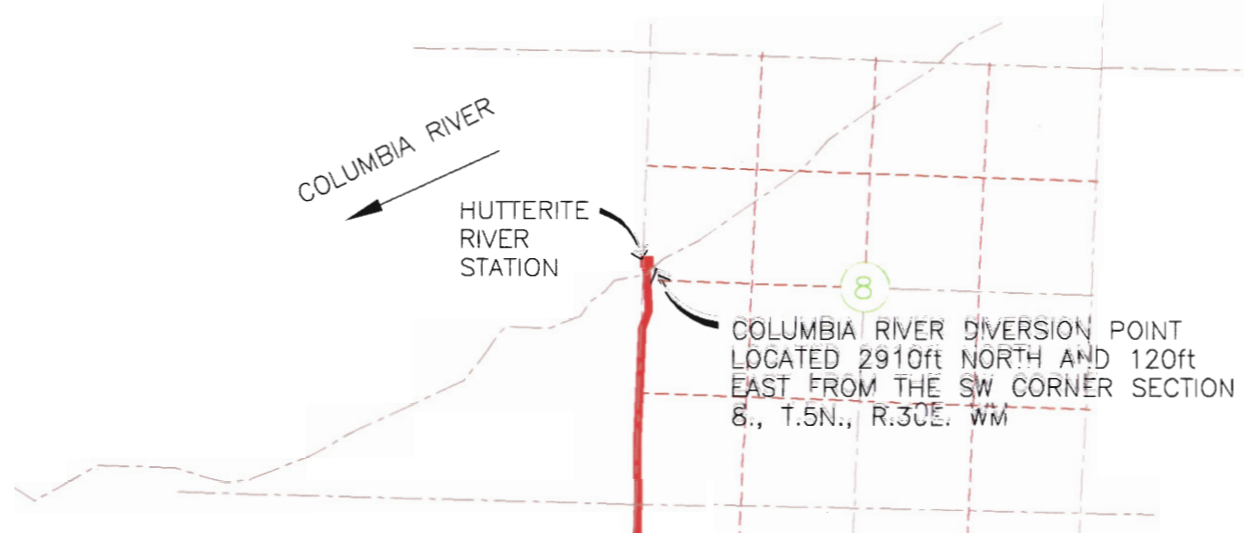
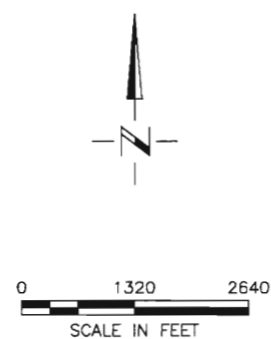


ECHO IRRIGATION DISTRICT COLUMBIA RIVER
SURFACE WATER APPLICATION MAP
5/20/09

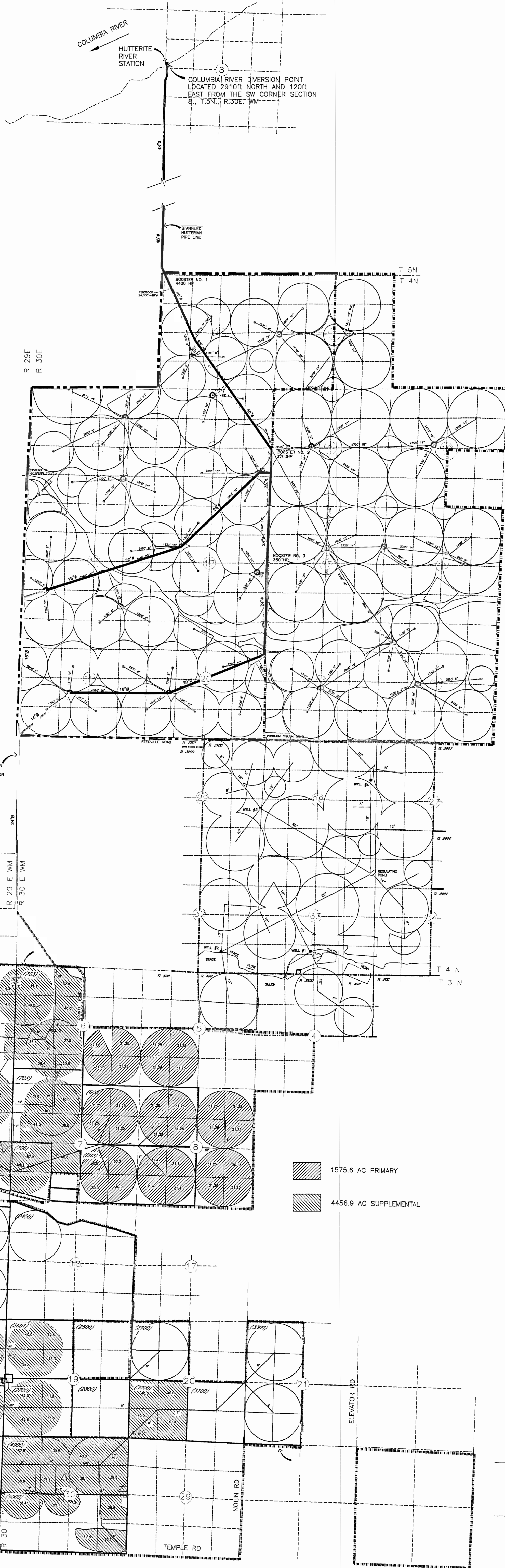
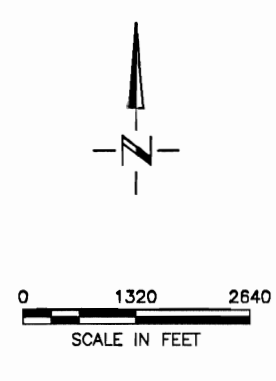


RECEIVED
MAY 26 2009
WATER RESOURCES DEPT
SALEM, OREGON

240

S-87074

ECHO IRRIGATION DISTRICT COLUMBIA RIVER
 SURFACE WATER APPLICATION MAP
 5/20/09



- 1575.6 AC PRIMARY
- 4456.9 AC SUPPLEMENTAL

RECEIVED
 MAY 26 2009
 WATER RESOURCES DEPT
 SALEM, OREGON

240

S-87074