

BOOK 15

5-87438

SECTION 24 T.37S. R.6W. W.M
JOSEPHINE COUNTY

SCALE 1" = 400'

SEE MAP 37 6 13

22

RECEIVED

NOV 2 1 2003

WATER RESOURCES DEPT
SALEM, OREGON

RECEIVED

NOV 2 1 2008

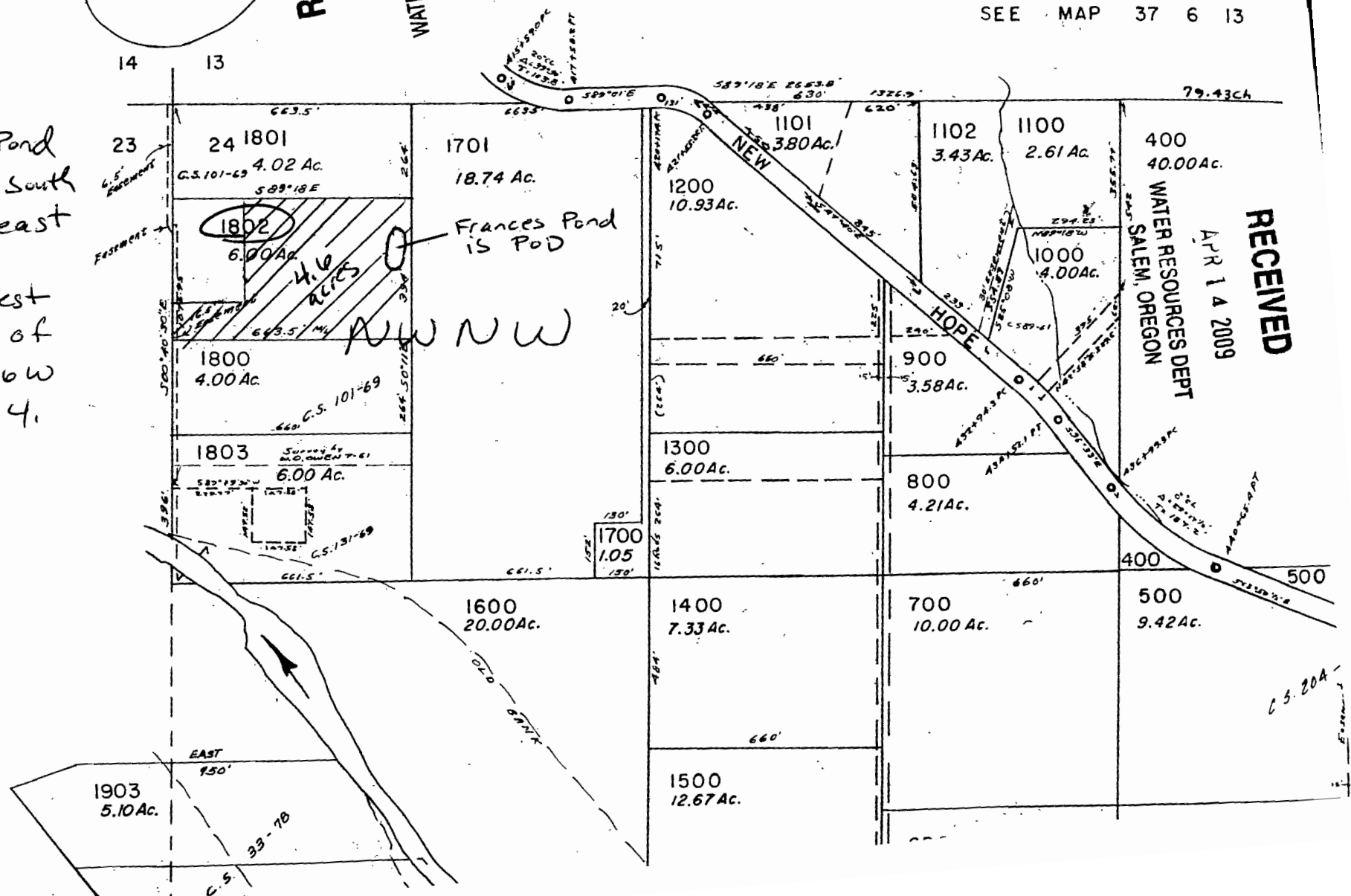
WATER RESOURCES DEPT
SALEM, OREGON

RECEIVED

APR 14 2009

WATER RESOURCES DEPT
SALEM, OREGON

Frances Pond is 400' south and 600' east of the northwest corner of T37S R6W Sec 24.



14 13

23
6.5' EASEMENT

24 1801
G.S. 101-69
4.02 Ac.
589'18\"/>

1802
6.00 Ac.
4.6 ACRES

1800
4.00 Ac.
G.S. 101-69

1803
6.00 Ac.
G.S. 131-69

1700
1.05
130'

1701
18.74 Ac.

Frances Pond is Pond

AWNW

1600
20.00 Ac.

1400
7.33 Ac.

700
10.00 Ac.

500
9.42 Ac.

1903
5.10 Ac.

1500
12.67 Ac.

400
40.00 Ac.

1102
3.43 Ac.

1100
2.61 Ac.

1000
4.00 Ac.

900
3.58 Ac.

800
4.21 Ac.

1300
6.00 Ac.

1200
10.93 Ac.

1101
3.80 Ac.

79.43 Ch

EAST
950'

33-70
C.S.

C.S. 20A