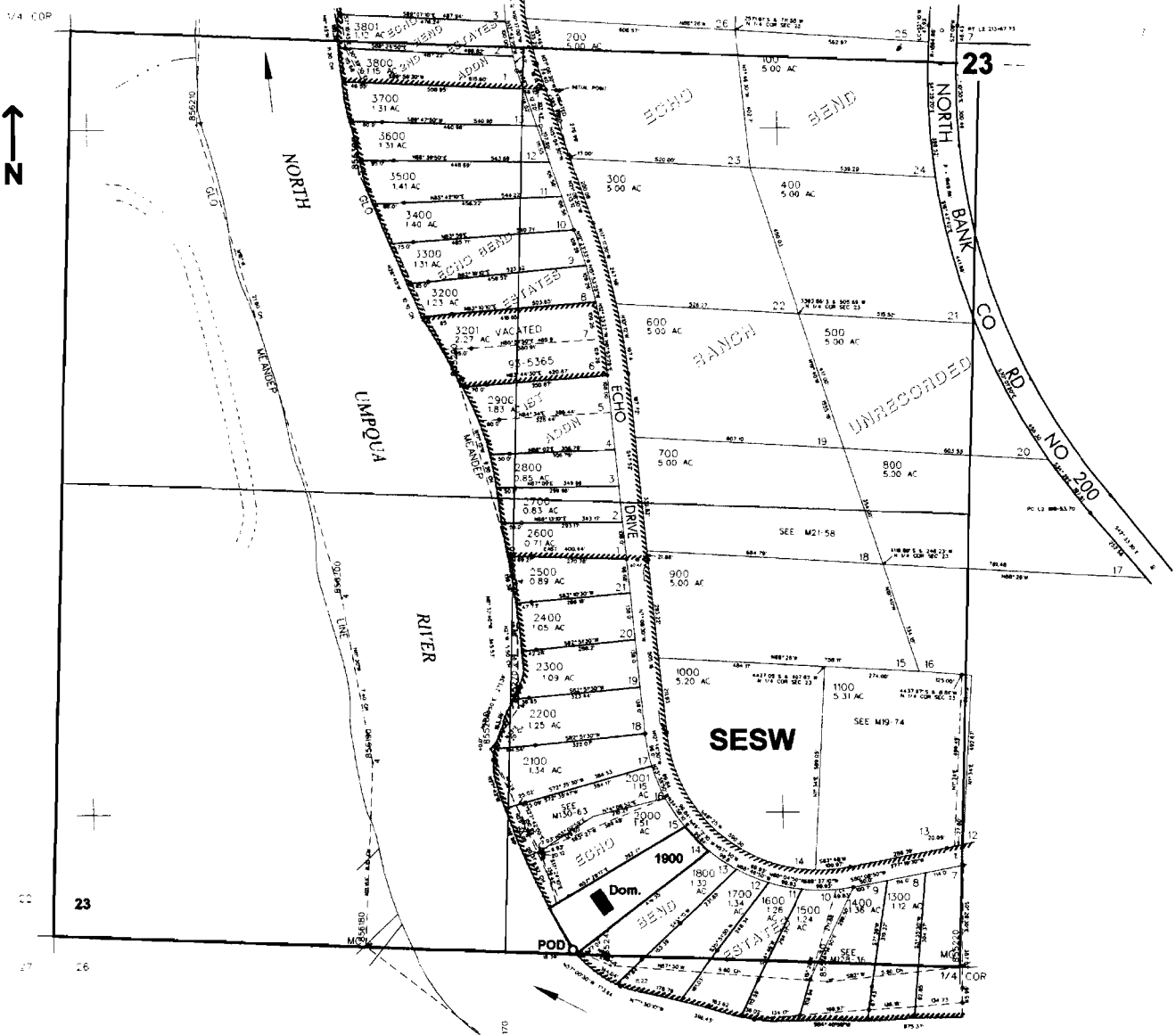


SW/4 SEC. 23 T.26S. R. 5W W.M.
 DOUGLAS COUNTY
 Scale: 1" = 500'



POD is located 15 ft. N. and 1125 ft. W. from the S 1/4 corner of Sec. 23

RECEIVED
 OCT 08 2008
 WATER RESOURCES DEPT
 SALEM, OREGON

Appalo S. 87303