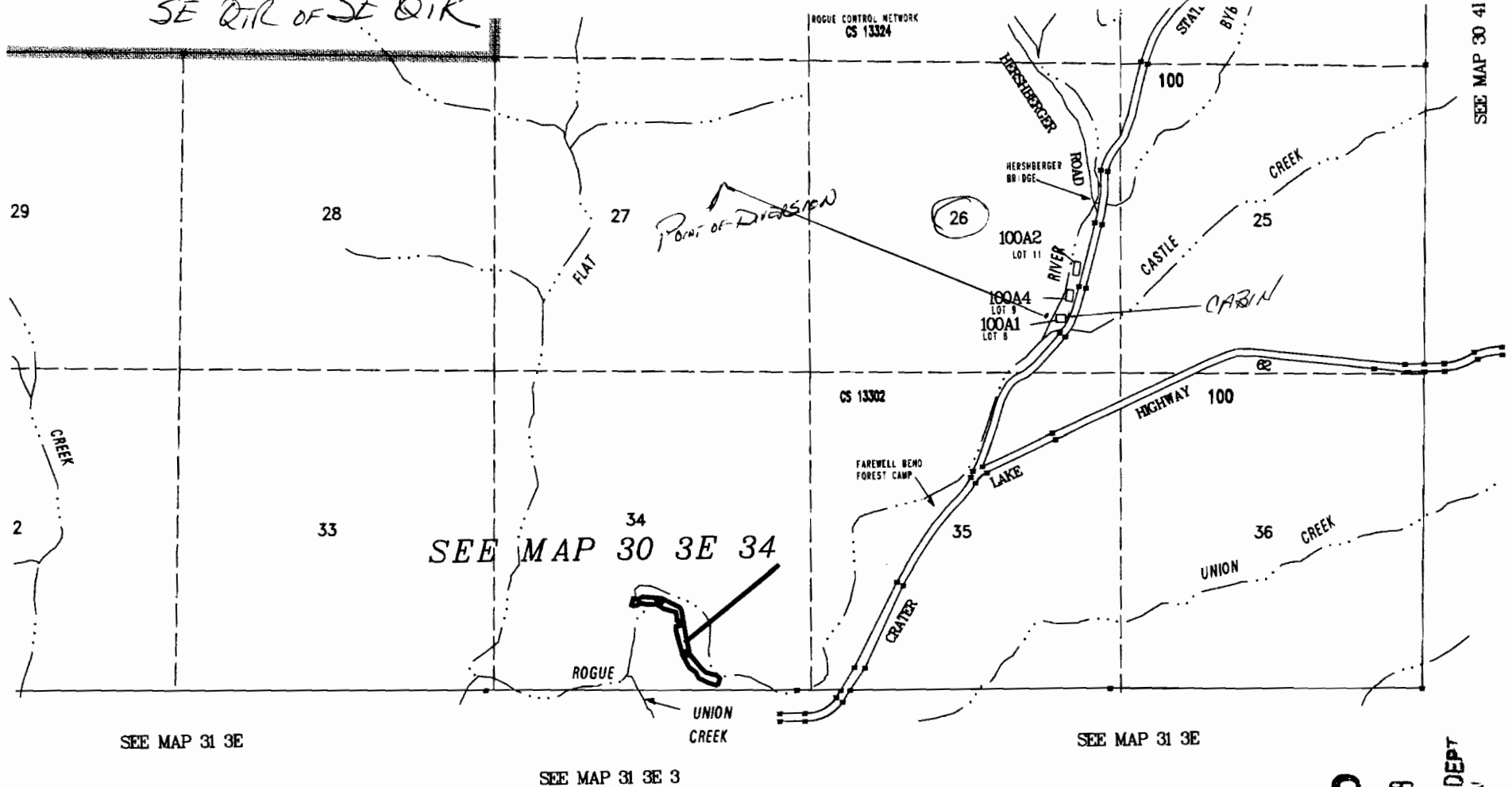


TOWNSHIP 30 SOUTH  
RANGE 3 EAST  
SECTION 26  
SE QTR OF SE QTR

TAX LOT # 100 A1

2" = 1 MILE Hwy 230



RECEIVED

JUL 15 2008

WATER RESOURCES DEPT  
STATE OF OREGON

App No 5-87310

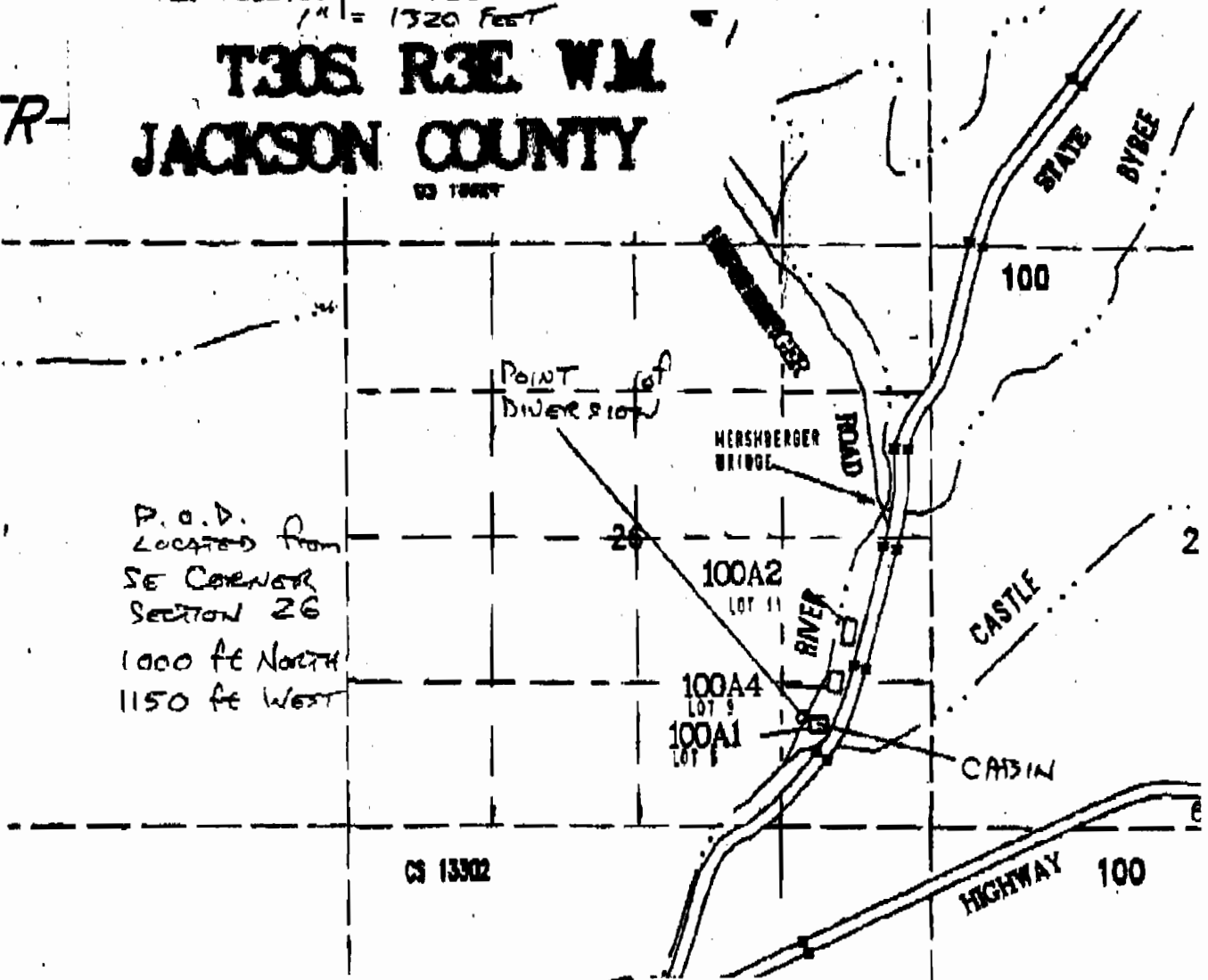
22

TAX LOT # 100 A1

APPROX. ADJUSTED  
CORRECTED SCALE  
1" = 1320 FEET

T30S R3E W.M.  
JACKSON COUNTY  
W3 T88N

R-



P.O.D.  
LOCATED FROM  
SE CORNER  
SECTION 26  
1000 FE NORTH  
1150 FE WEST

TWN 5TH P 30 SOUTH  
RANGE 3 EAST  
SECTION 26  
SE QTR OF SE QTR

OCT. 16 2008