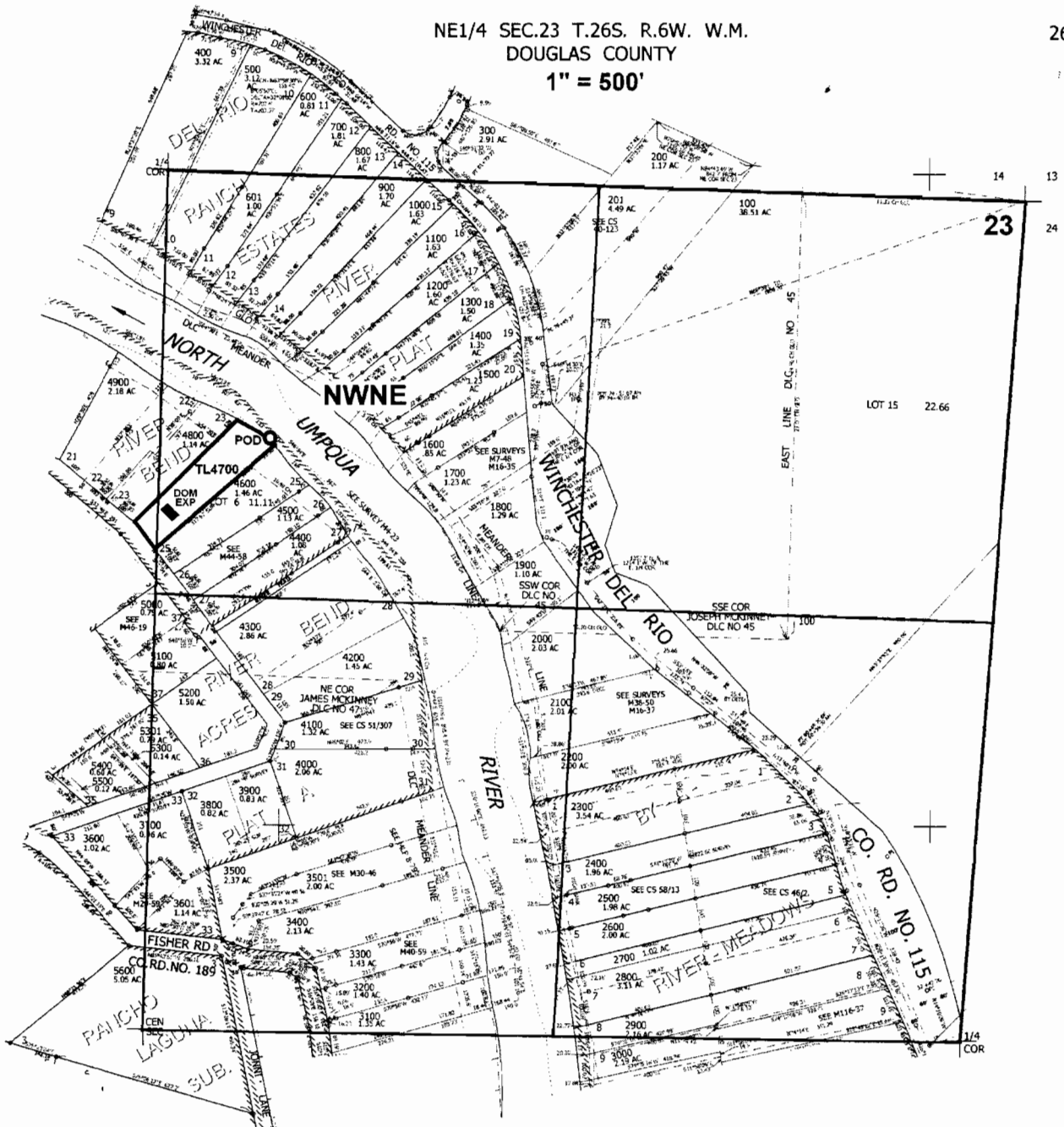


NE1/4 SEC.23 T.26S. R.6W. W.M.
DOUGLAS COUNTY
1" = 500'

26 6 23A



POD located 820 ft. S. and 330 ft. E. from N 1/4 corner of Section 23.

26 6 23A

RECEIVED

SEP 22 2008

WATER RESOURCES DEPT
SALEM, OREGON

App No S-87292