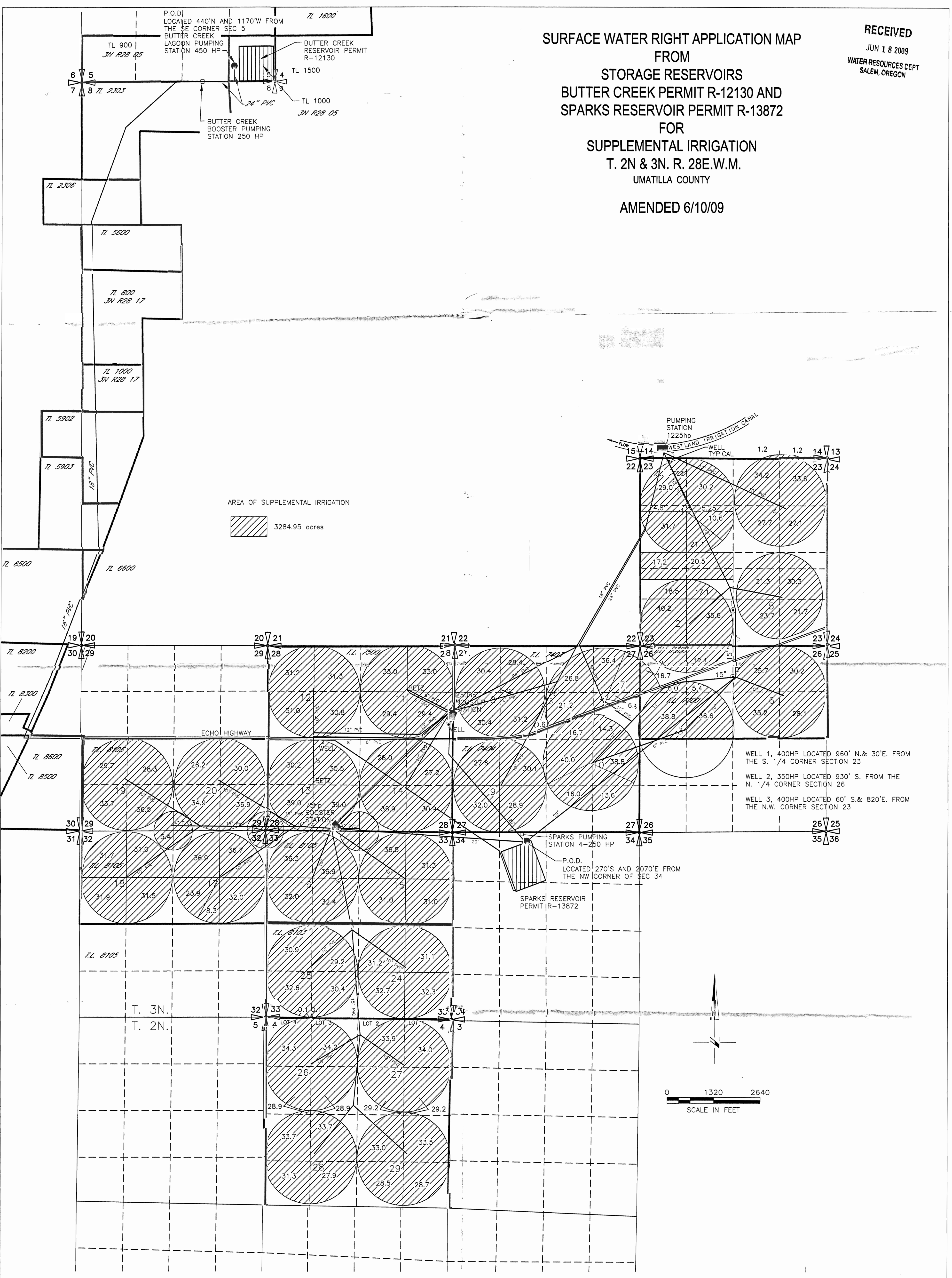


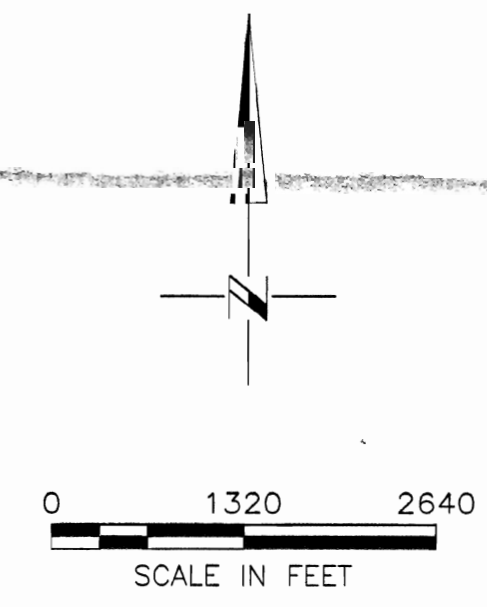
**SURFACE WATER RIGHT APPLICATION MAP
FROM
STORAGE RESERVOIRS
BUTTER CREEK PERMIT R-12130 AND
SPARKS RESERVOIR PERMIT R-13872
FOR
SUPPLEMENTAL IRRIGATION
T. 2N & 3N. R. 28E.W.M.
UMATILLA COUNTY
AMENDED 6/10/09**

RECEIVED
JUN 18 2009
WATER RESOURCES DEPT
SALEM, OREGON



AREA OF SUPPLEMENTAL IRRIGATION
3284.95 acres

WELL 1, 400HP LOCATED 960' N. & 30'E. FROM THE S. 1/4 CORNER SECTION 23
WELL 2, 350HP LOCATED 930' S. FROM THE N. 1/4 CORNER SECTION 26
WELL 3, 400HP LOCATED 60' S. & 820'E. FROM THE N.W. CORNER SECTION 23



NOTE: THE PURPOSE OF THIS MAP IS TO IDENTIFY THE APPROXIMATE LOCATION OF THE WATER RIGHT. IT IS NOT INTENDED TO PROVIDE INFORMATION RELATIVE TO THE LOCATION OF PROPERTY OWNERSHIP BOUNDARY LINES.