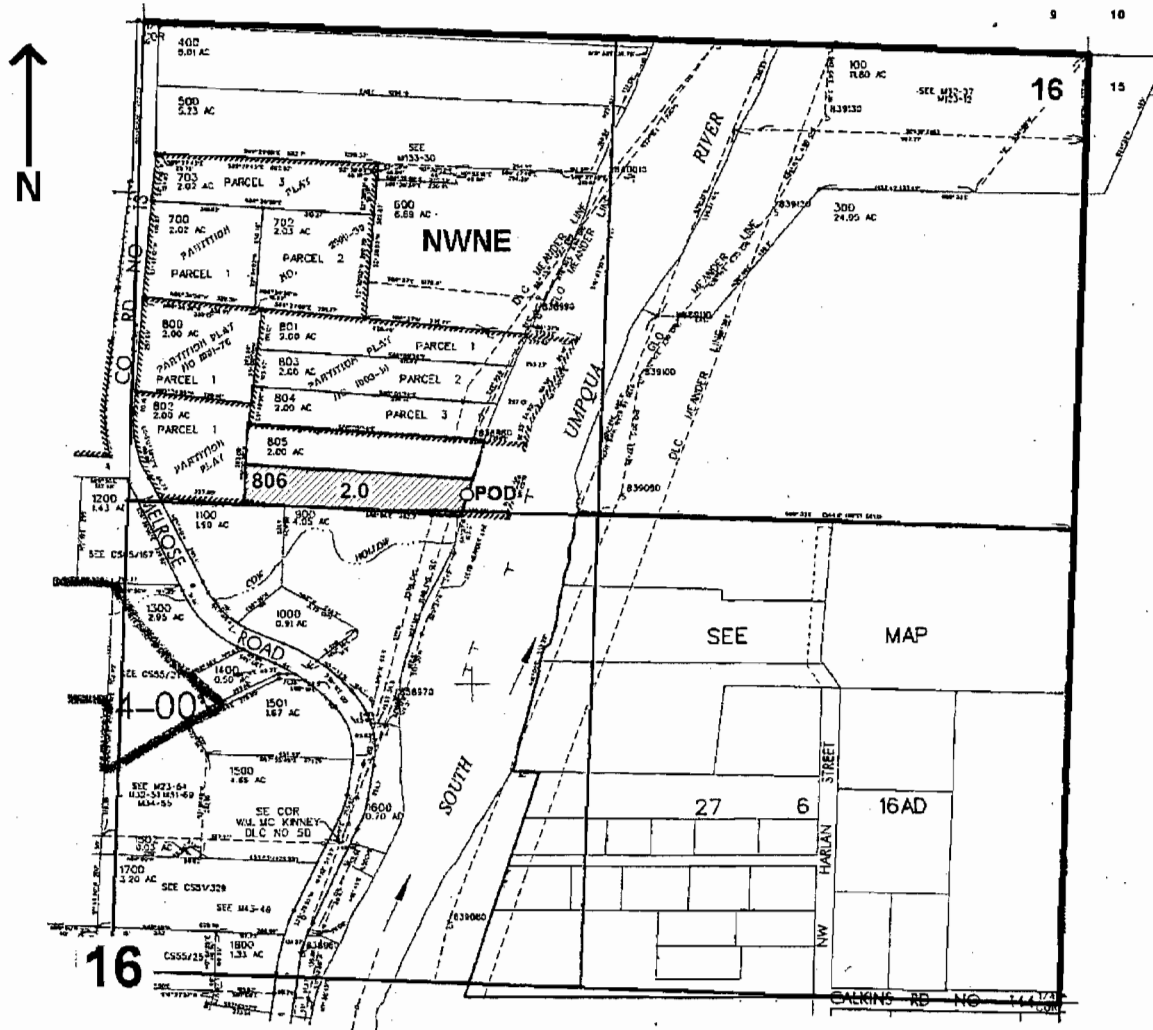


S-87440

NE 1/4 SEC. 16 T. 27 S. R. 6 W W.M.
DOUGLAS COUNTY
Scale: 1" = 500'



POD is located 1280 ft. S. and 950 ft. E. from the N1/4 corner of Sec. 16

RECEIVED

APR 17 2009

WATER RESOURCES DEPT
SALEM, OREGON