

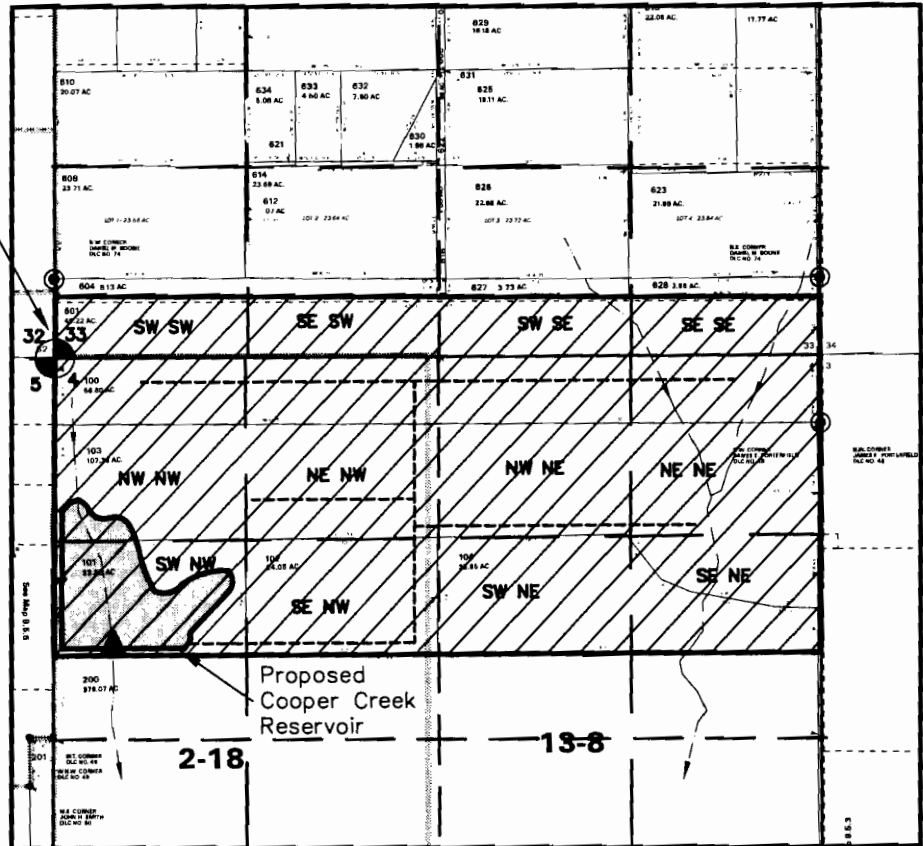
WATER RIGHTS APPLICATION MAP PPV COOPER CREEK



T8S, R5W, WM S 33, Taxlot 601
T9S, R5W, WM S 4, Taxlots 100-104
POLK COUNTY, OREGON
WILLAMETTE RIVER BASIN

NW corner
Sec. 4

IRRIGATION ACREAGE		
T8S R5W SEC. 33	SW SW	12.9 AC
	SE SW	12.6 AC
	SW SE	12.4 AC
	SE SE	12.1 AC
	TOTAL -	50.0 AC
T9S R5W SEC. 4	NW NW	40.0 AC
	NE NW	40.0 AC
	NW NE	40.0 AC
	NE NE	40.0 AC
	SW NW	21.6 AC
	SE NW	21.9 AC
	SW NE	21.8 AC
	SE NE	21.7 AC
	TOTAL -	247.0 AC
TOTAL IRRIGATED AC		297.0



▲ Point of Diversion is 1980 ft south and 400 ft east of NW corner Section 4.



Potential irrigation area: 297 acres

----- Proposed main irrigation pipe
(Approx. location—System not designed yet)

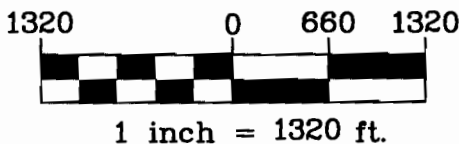
- - - - - Unnamed intermittent stream

RECEIVED

MAR 14 2008

WATER RESOURCES DEPT
SALEM, OREGON

THIS MAP WAS PREPARED FOR THE PURPOSE OF IDENTIFYING THE LOCATION OF WATER RIGHTS ONLY AND IS NOT INTENDED TO PROVIDE LEGAL DIMENSIONS OR LOCATION OF PROPERTY OWNERSHIP LINES.



Base Maps:
Tax Assessor Maps 8S 5 33
and 9S 5 4



Project: 307-2-151
Drawing: 3072151H WR.dwg
By: CVB/WPK
Checked by: EAU
Date: 2-18-08

App No 5-87123