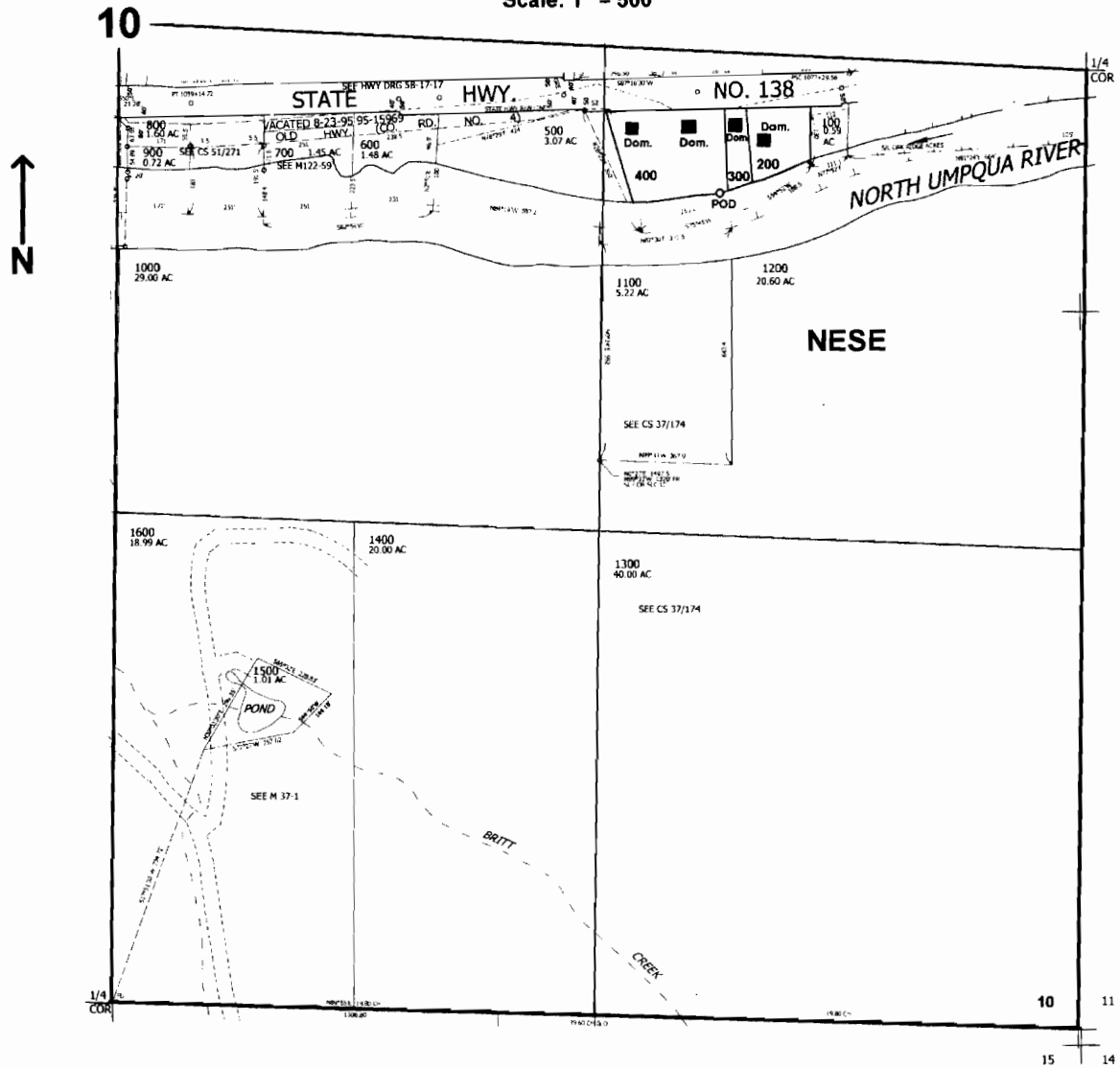


SE1/4 SEC.10 T.26S. R.3W. W.M.  
DOUGLAS COUNTY

Scale: 1" = 500'



POD is located 350 ft. S. and 980 ft. W. from the E1/4 corner of Sec. 10

RECEIVED

AUG 29 2008

WATER RESOURCES DEPT  
SALEM, OREGON

App NOS 87285