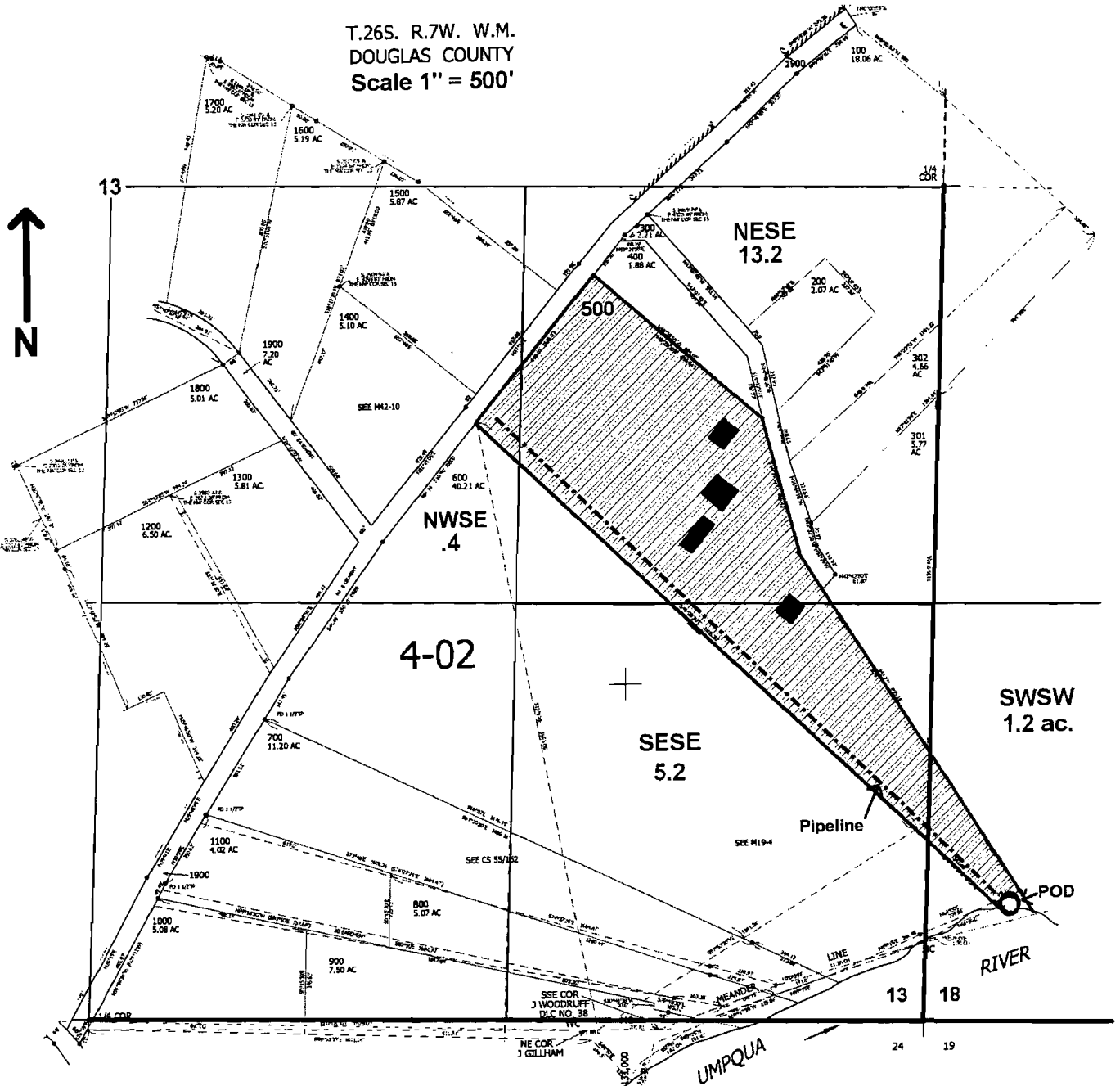


T.26S. R.7W. W.M.
DOUGLAS COUNTY
Scale 1" = 500'



POD located 375 ft. N. and 1250 ft. E. of the NE Corner of DLC 46 from Survey M 23-38.

RECEIVED

FEB 02 2009

WATER RESOURCES DEPT
SALEM, OREGON

App No S-87386