

THIS MAP WAS PREPARED FOR ASSESSMENT PURPOSE ONLY

NE1/4 SEC. 20 T.1N. R.3E. W.M.
MULTNOMAH COUNTY
1" = 200'

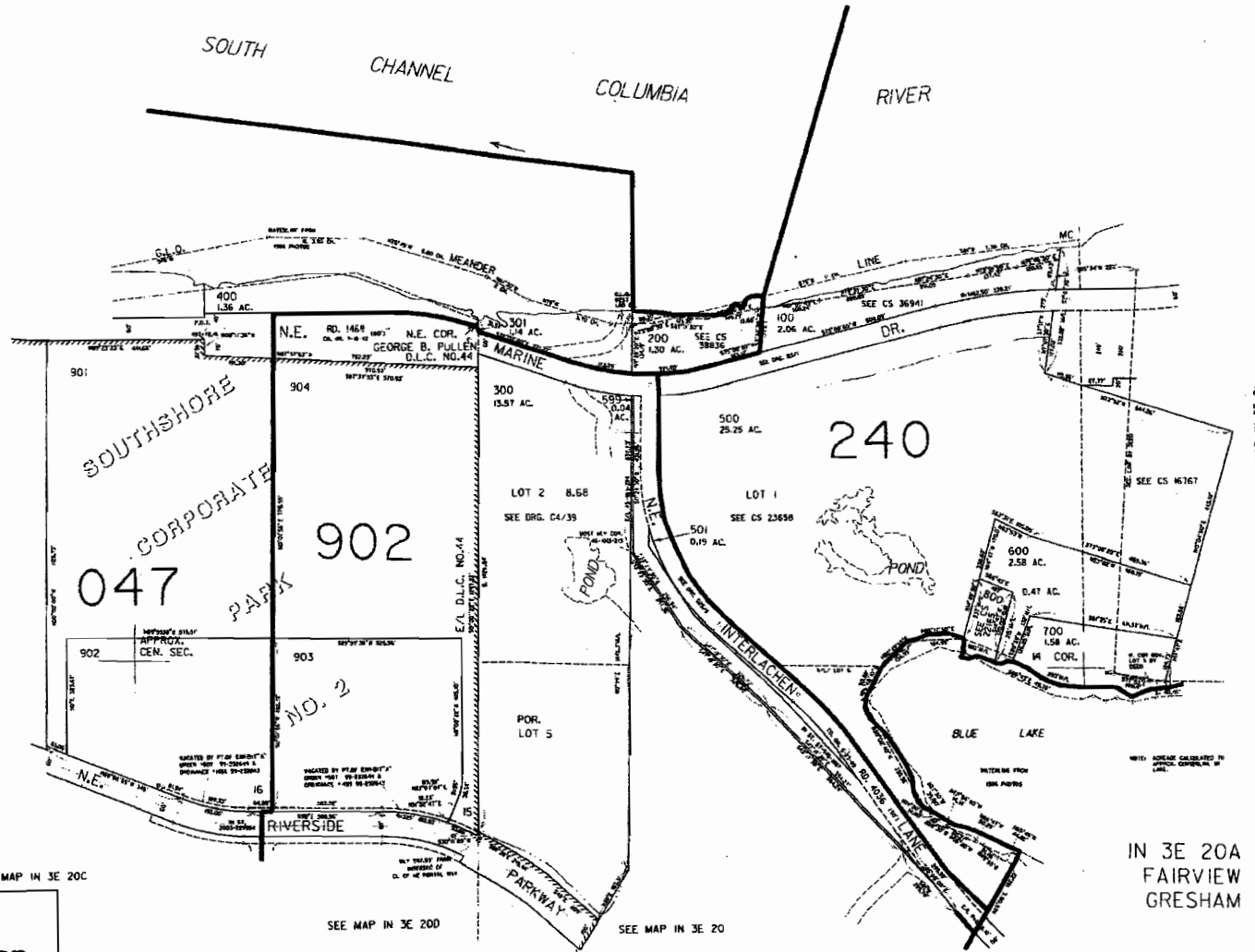
17 16
20 21

IN 3E 20A
FAIRVIEW
GRESHAM

MCCUIRE'S ISLAND

SEE MAP IN 3E 17

CANCELLED NO.
900
1000



SEE MAP IN 3E 20B

SEE MAP IN 3E 21

SEE MAP IN 3E 20C

SEE MAP IN 3E 20D

SEE MAP IN 3E 20

Exhibit C
Tax Assessor's Map

RECEIVED

JUL 13 2009

WATER RESOURCES DEPT
SALEM, OREGON