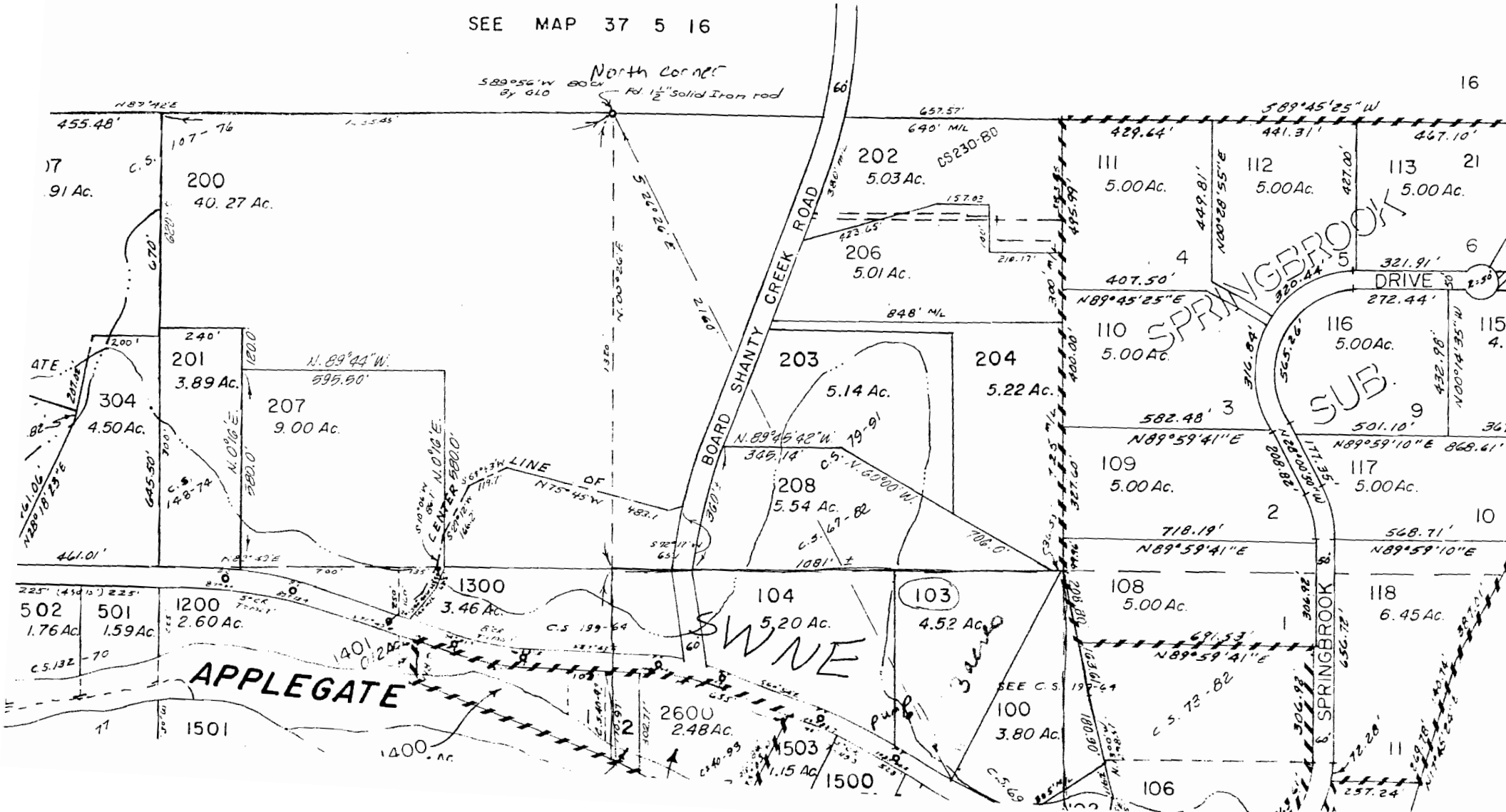


SECTION 21 T.37S. R.5W. W. M.
JOSEPHINE COUNTY

1" = 400'

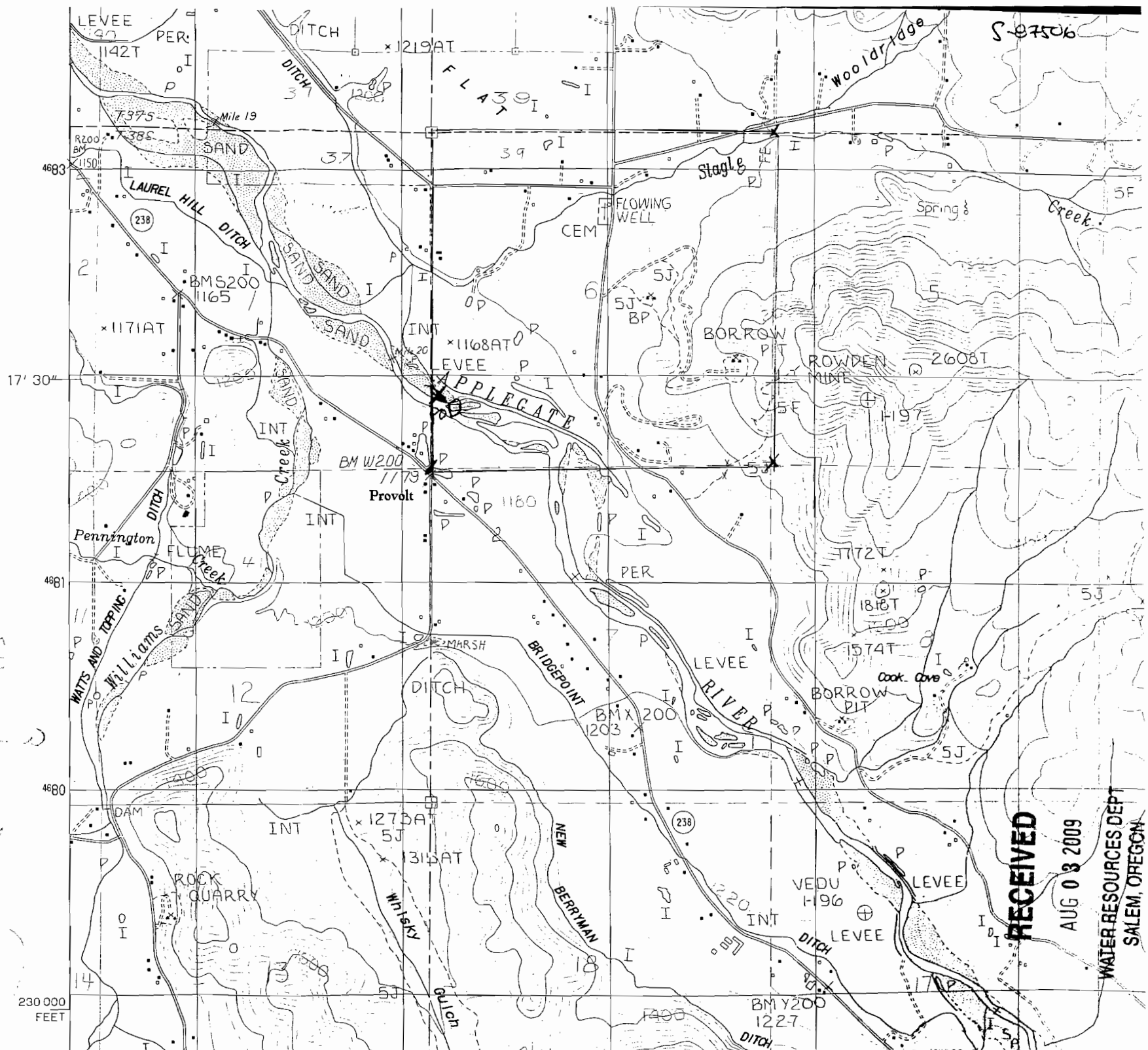
N
↑

SEE MAP 37 5 16



Point of
diversion
map

N
↑



The PoD is
1250' N and
150' E from
SW corner of
sec 6
T38S R-2
for the
North
Applegate
Ditch

RECEIVED

AUG 03 2009

WATER RESOURCES DEPT
SALEM, OREGON

230 000
FEET