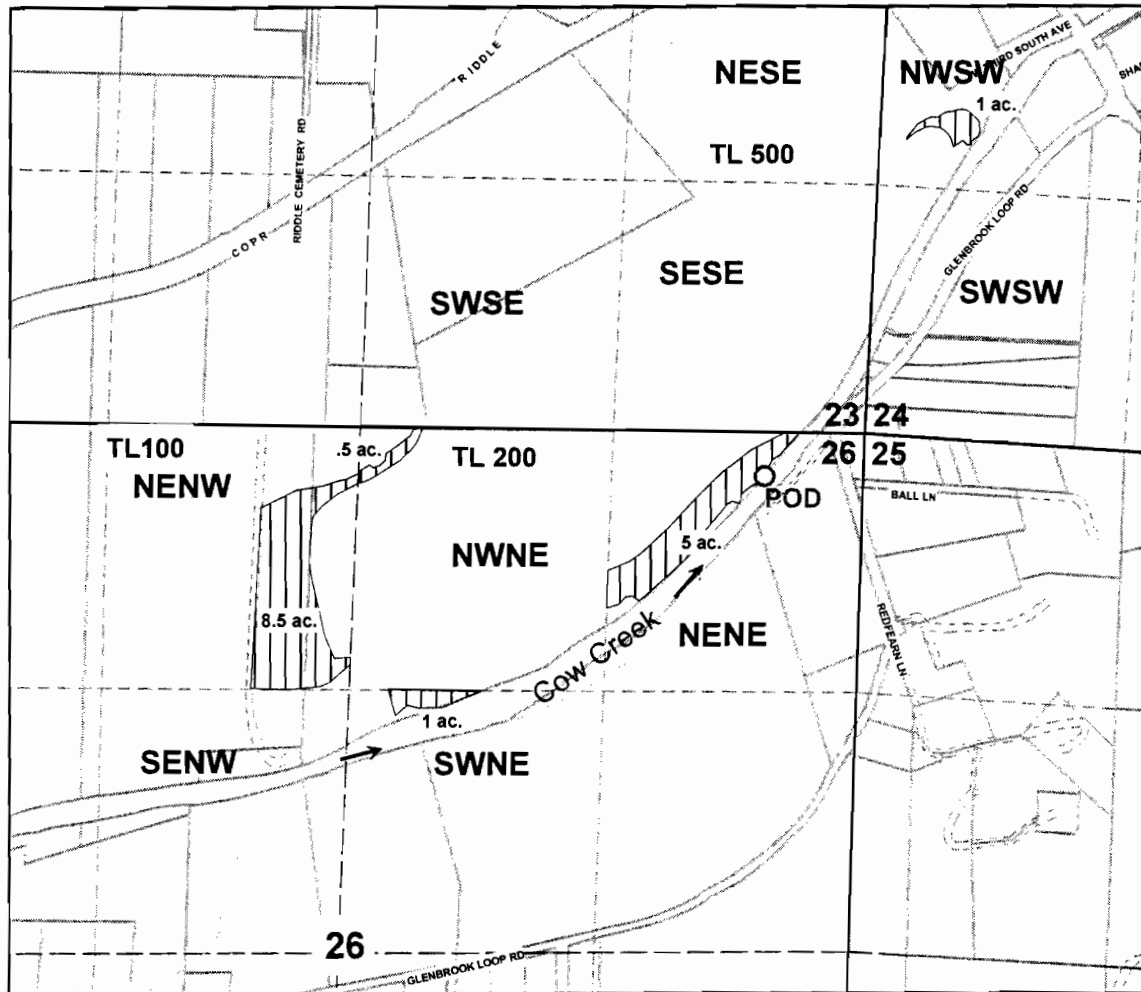


SECTIONS 24, 26 T.30S. R.6W. W.M.
 DOUGLAS COUNTY
 Scale 1" = 1000'



POD: 230 ft. S. and 550 ft. W. from the NE corner of Sec. 26

RECEIVED
 FEB 02 2010
 WATER RESOURCES DEPT
 SALEM, OREGON