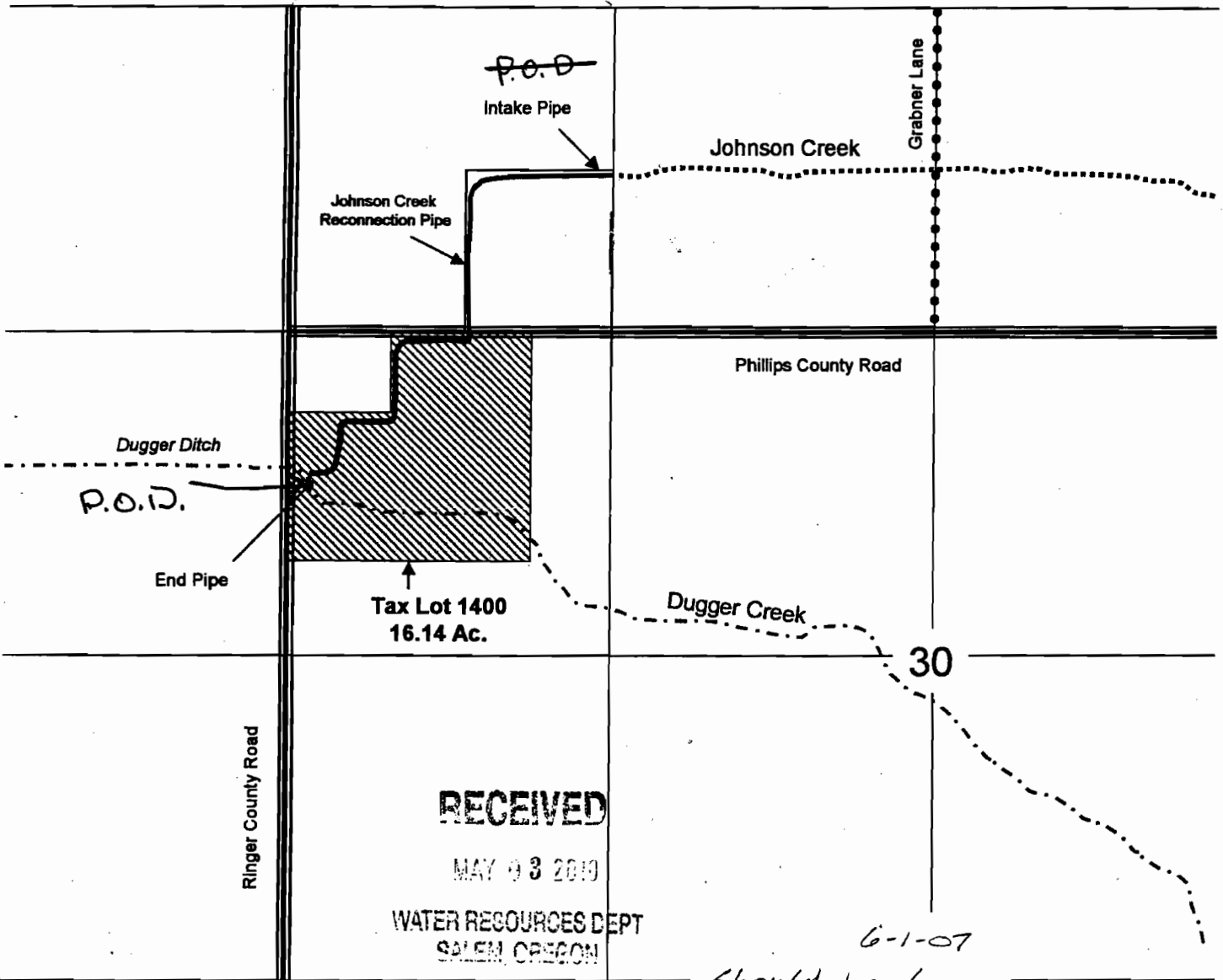




Sec. 30 T. 6N., R 35E W.M.
Umatilla County



RECEIVED

MAY 9 3 2010

WATER RESOURCES DEPT
SALEM, OREGON

6-1-07

*Should be from
the NW
corner.*

RECEIVED

MAY 29 2007

WATER RESOURCES DEPT
SALEM, OREGON

APPLICATION MAP
DAVID LESSER
Tax Lot #1400

*100'
75'*

1950' mFR ↓

*P.O.D. is located ~~1320'~~ E. and ~~1660'~~ S. of NE corner
of section 30. Irrigation = 16.14 acres in SW 1/4 / NW 1/4
of section 30.*