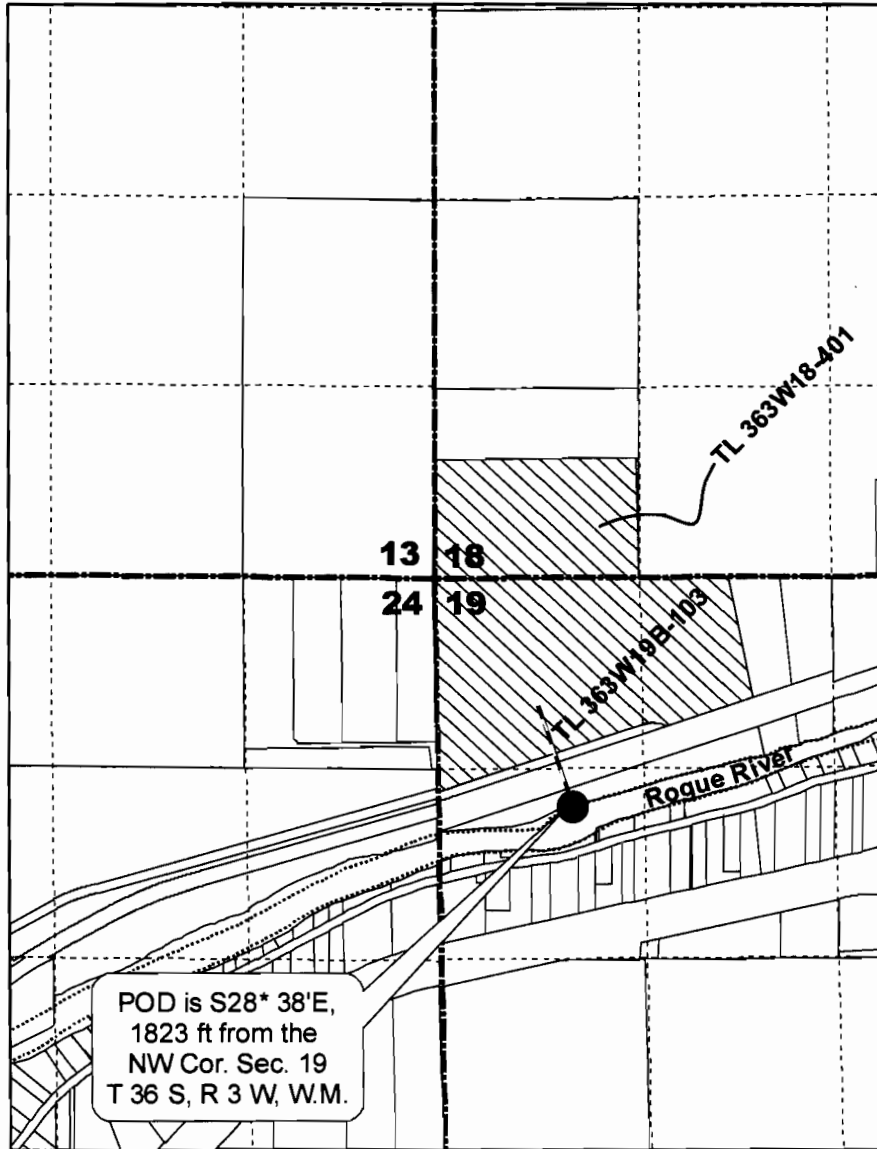


**Application Map**  
**For**  
**Use of Lost Creek Storage**  
**for Mining Use**  
**By**  
**Rogue Aggregates, Inc.**  
**T 36 S, R 3W**  
**Sec 18 & 19**







**RECEIVED**

AUG 18 2008

WATER RESOURCES DEPT  
 SALEM, OREGON

**Legend**

-  Area of water right coverage
-  Pipeline
-  Section Line
-  Quarter-quarter Line

N



1 inch = 1,320 feet

App No S-87260