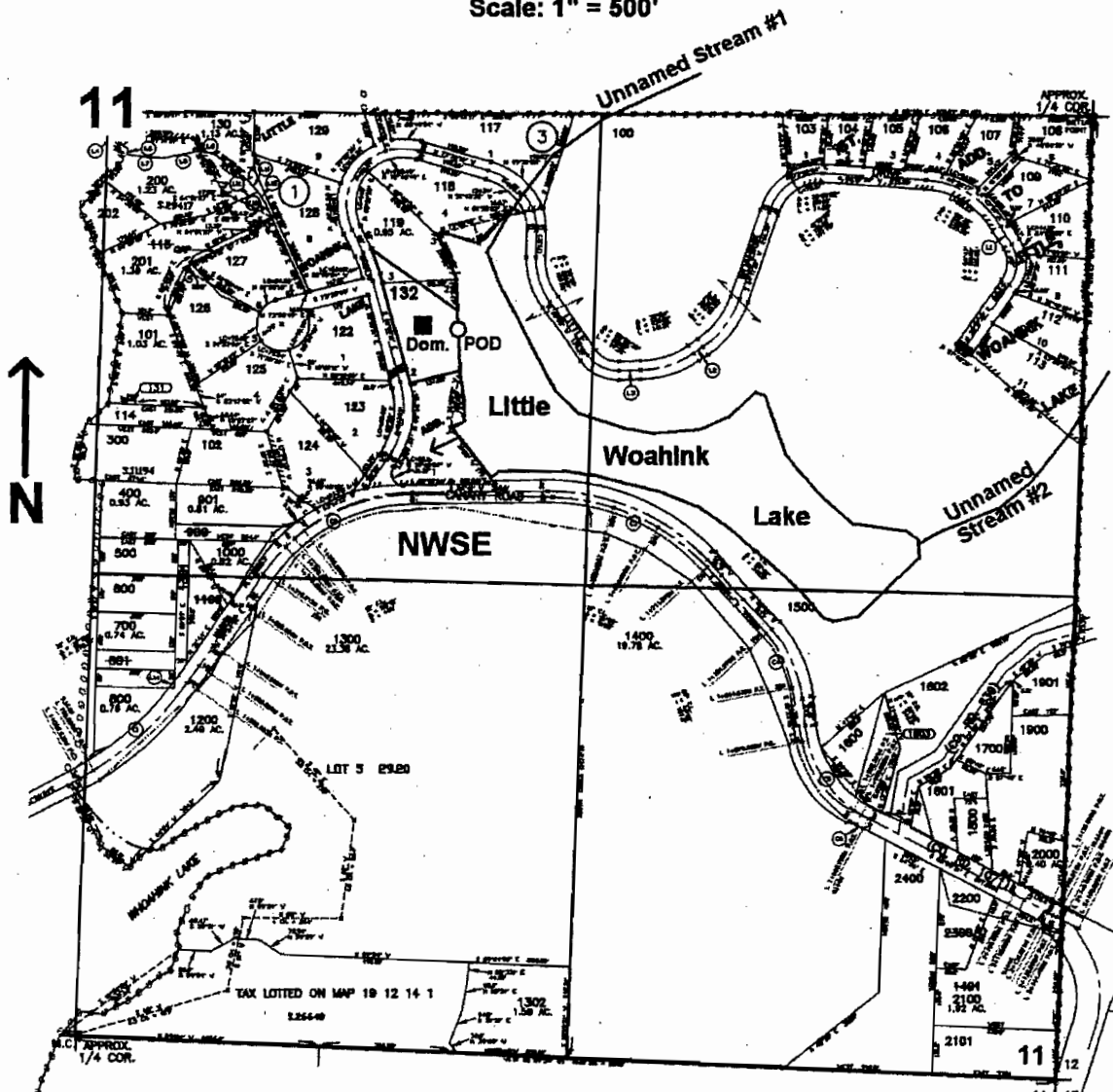


SE1/4 SEC. 11 T.19S. R.12W. W.M.
LANE COUNTY

Scale: 1" = 500'



POD is located 580 ft. S. and 1160 ft. E. from the center of Sec. 11

RECEIVED

JUN 20 2006

WATER RESOURCES DEPT
SALEM, OREGON

appnoS-86623