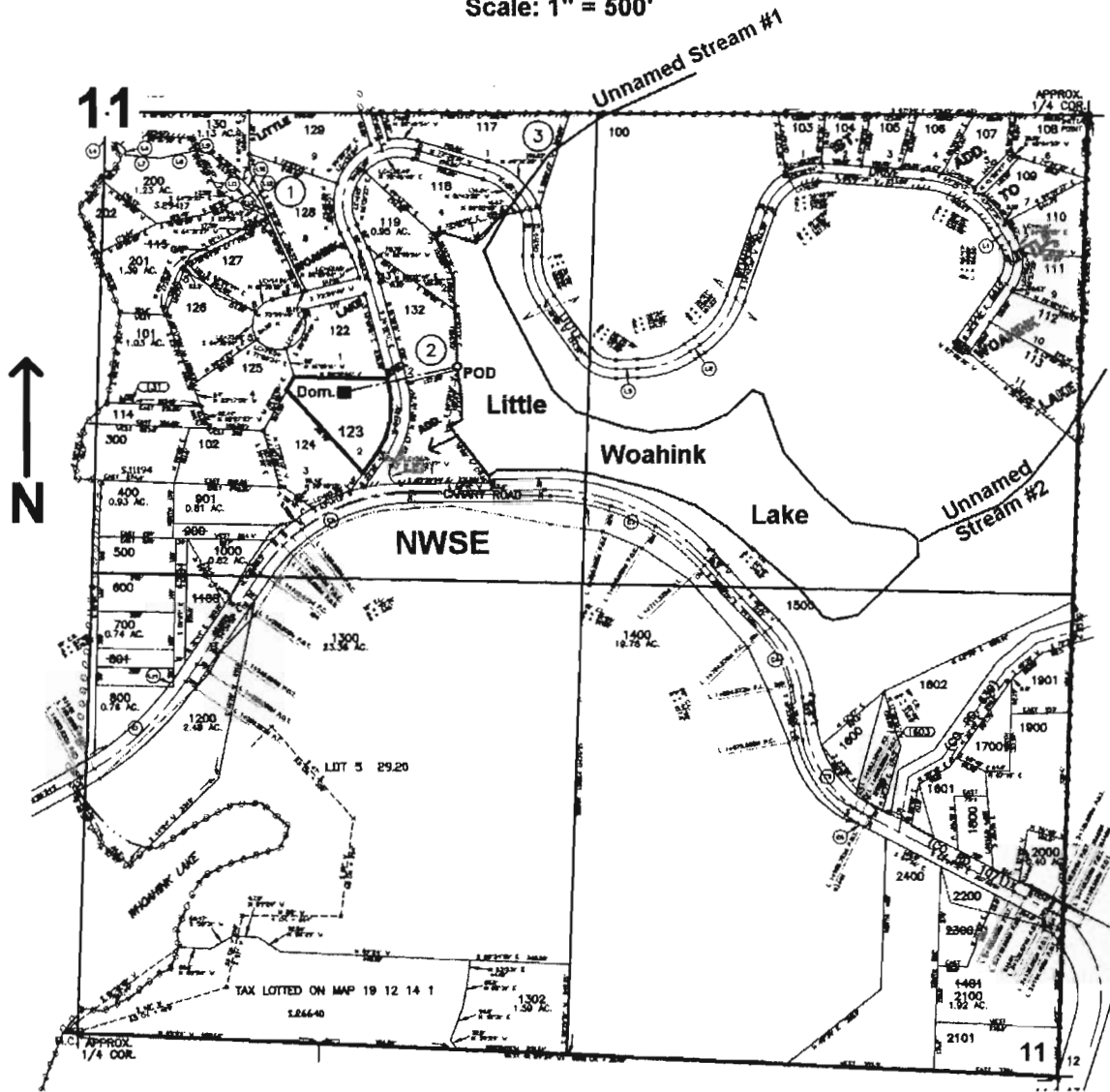


SE1/4 SEC. 11 T.19S. R.12W. W.M.  
LANE COUNTY

Scale: 1" = 500'



POD is located 680 ft. S. and 970 ft. E. from the center of Sec. 11

RECEIVED  
AUG 15 2006  
WATER RESOURCES DEPT  
SALEM, OREGON

approx 5-86669