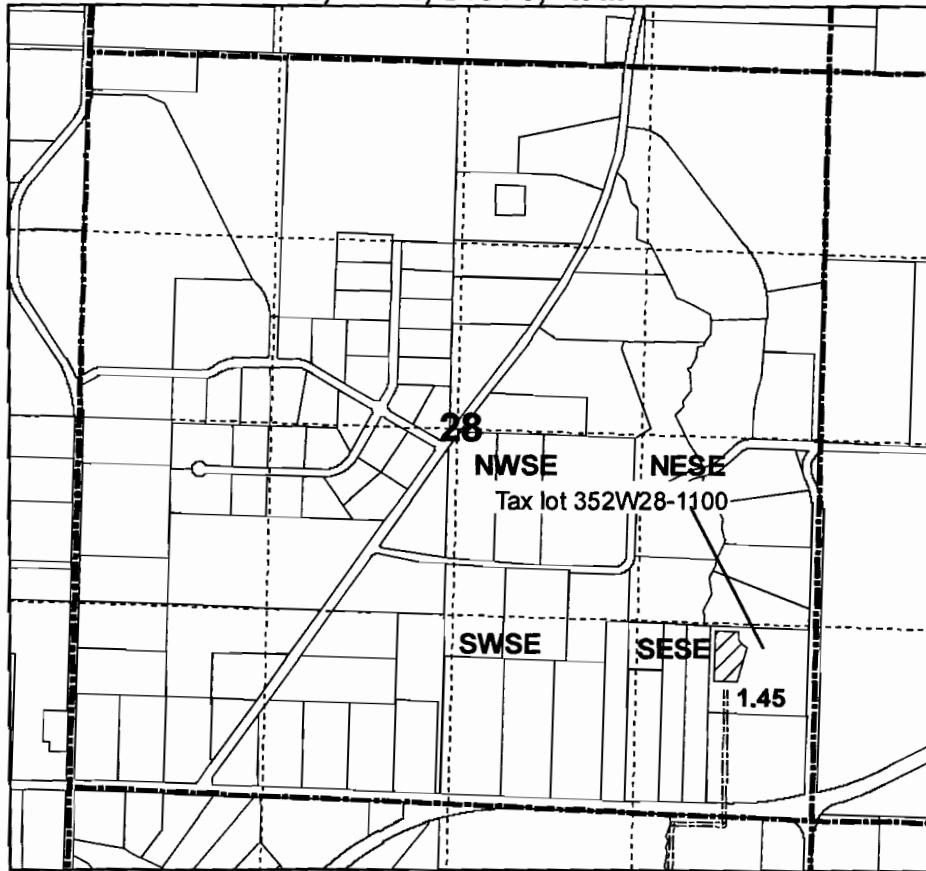

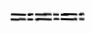


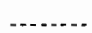


**Application Map  
Central Point School District #6  
T 35 S, R 2 W, Sec 28, W.M.  
Tax Lot 352W28-1100**

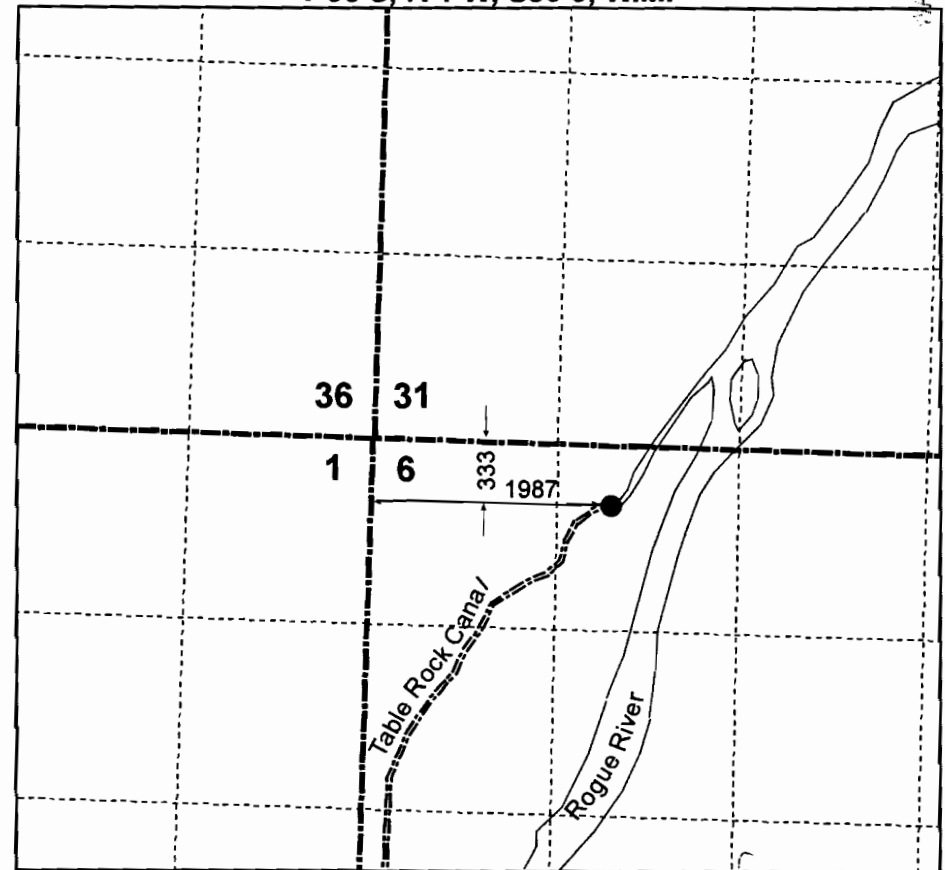
**Place of Use  
T 35 S, R 2 W, Sec 28, W.M.**



**Legend**

-  Area to be irrigated
-  School owned pipeline
-  RR Ranch pipeline
-  Section line
-  Quarter-quarter line

**Point of Diversion from Rogue River  
T 36 S, R 1 W, Sec 6, W.M.**



**RECEIVED**

JAN 07 2011  
WATER RESOURCES DEPT  
SALEM, OREGON



1 inch equals 1,320 feet

RECEIVED

DEC 13 2010

WATER RESOURCES DEPT  
SALEM, OREGON