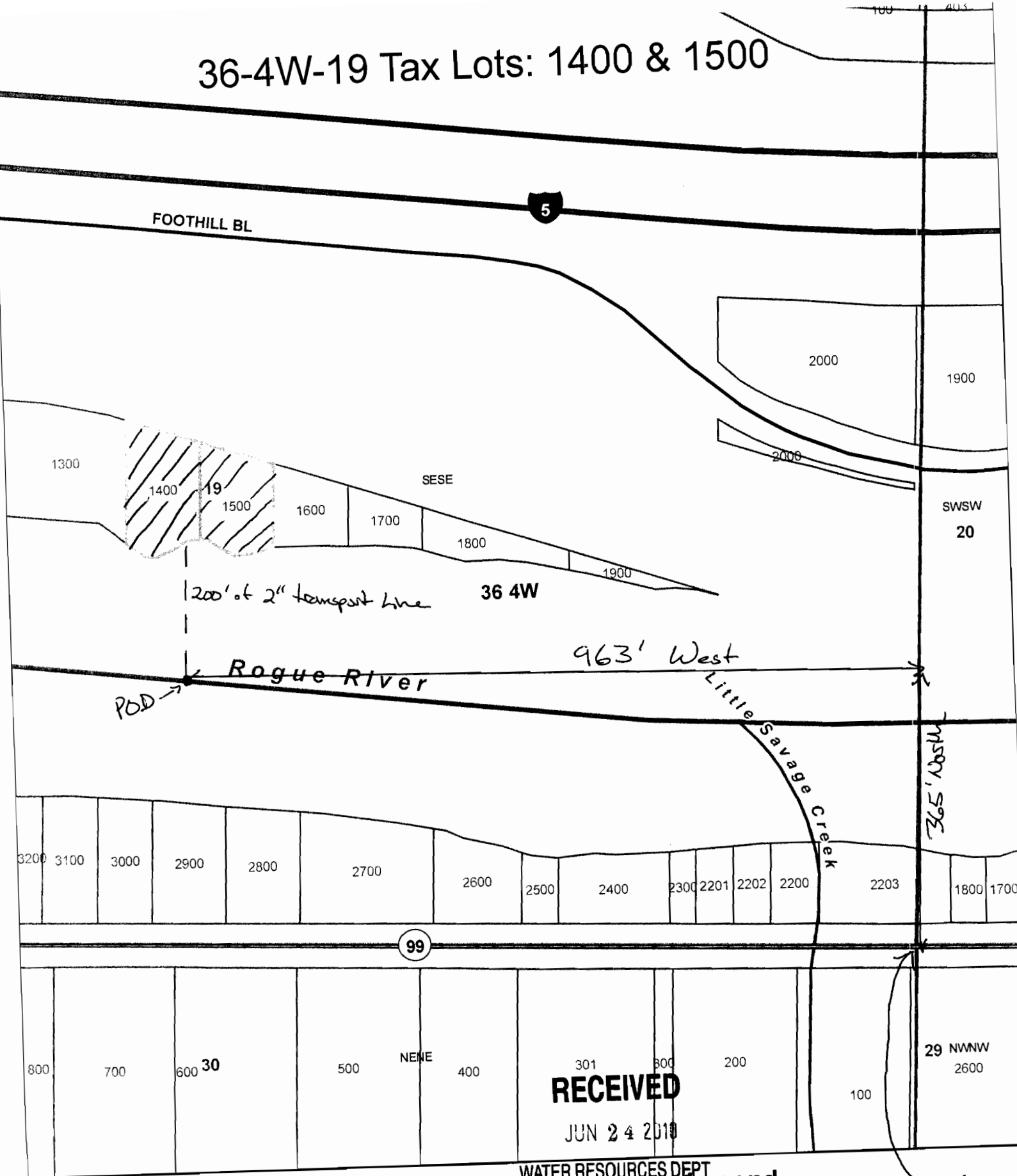


36-4W-19 Tax Lots: 1400 & 1500



RECEIVED
JUN 24 2010

WATER RESOURCES DEPT
SALEM, OREGON

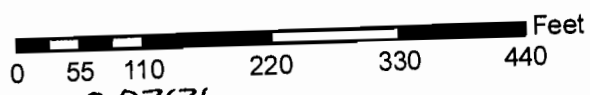
Legend

- Tax Lots
- Sections
- Townships

*Reference
Corner*



1 inch = 166 feet



S-87631

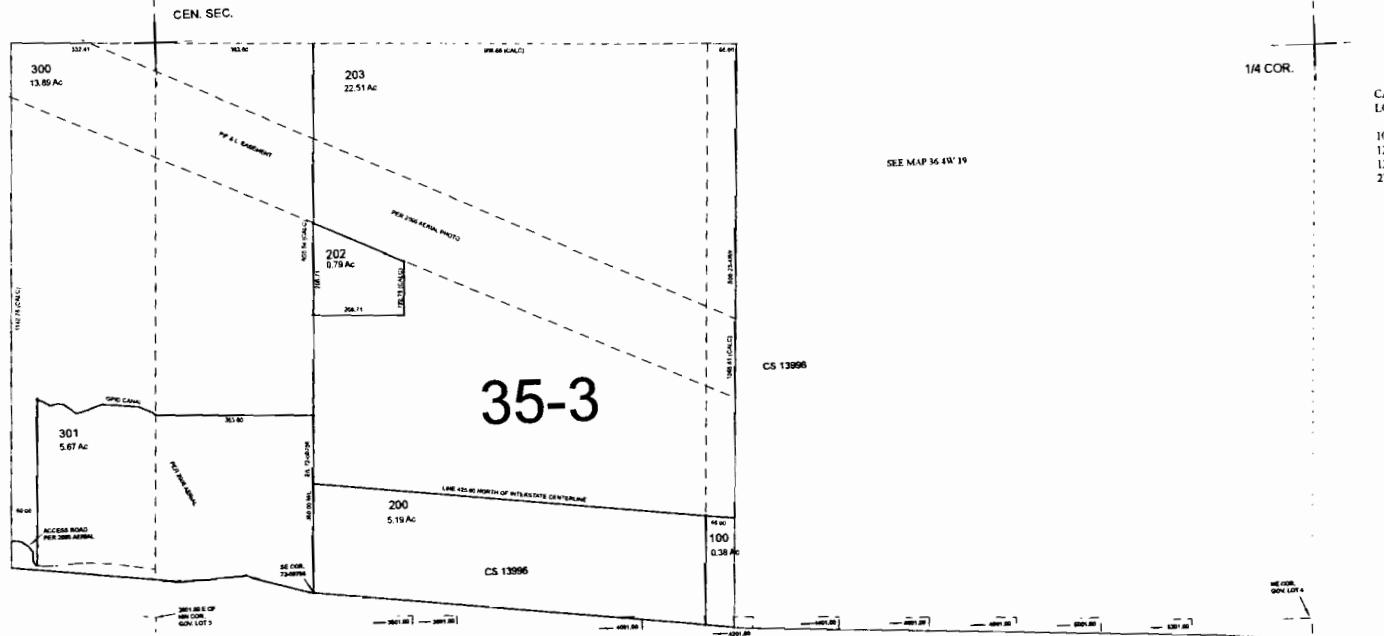
FOR ASSESSMENT AND TAXATION ONLY

S.E.1/4, SEC.19, T.36S., R.4W., W.M.
JACKSON COUNTY
1" = 200'

36 4W 19D



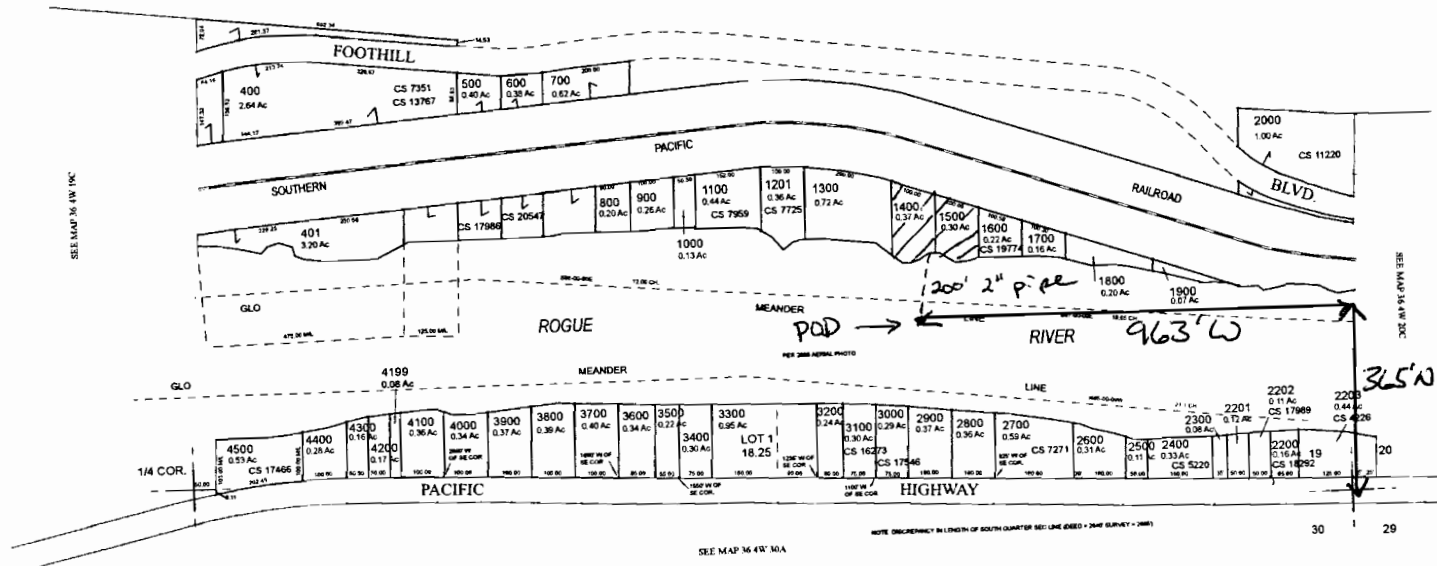
* For more detail
see enclosed
scaled map



CANCELLED TAX
LOT NUMBERS
101
1200
1202
2701

S-07631

U.S. HWY. I-5



Reference
Corner

36 4W 19D

NEW MAP AUGUST 05, 2009
REV. DECEMBER 04, 2009

RECEIVED

JUN 24 2010

WATER RESOURCES DEPT
SALEM, OREGON

GIS DATA
05/05/2010 8:30:26 AM AIRMOJAJ