

SECTION 22 T29S R12W W.M.
COOS COUNTY

1" = 400'

SEE MAP 29S 12W 15

SECTION 23 T29S R12W W.M.
COOS COUNTY

1" = 400'

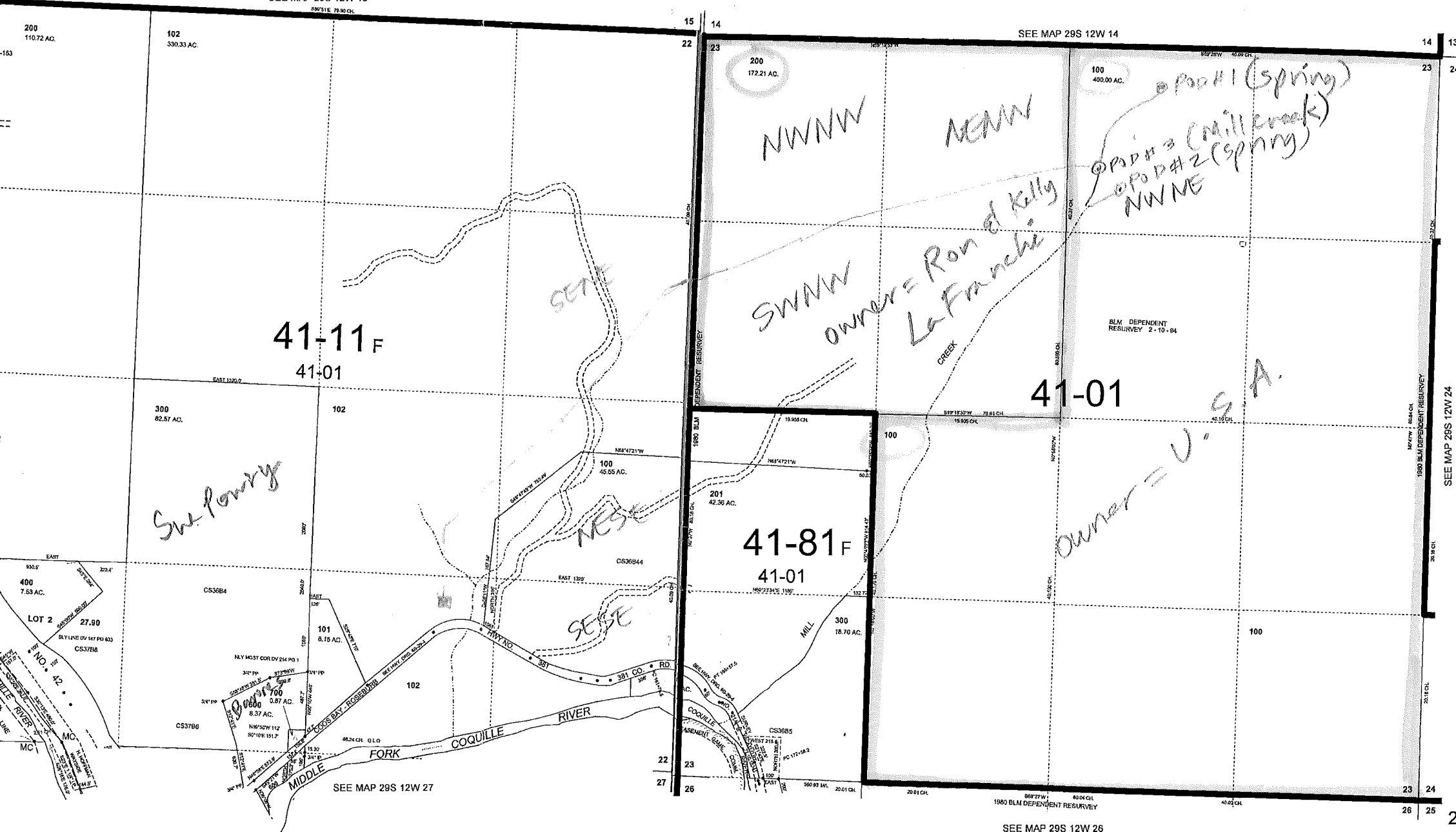
SEE MAP 29S 12W 14

29S 12W 23

CANCELLED NO.

500
101
202

AS PREPARED FOR
T PURPOSE ONLY



100 -

200 -

12-08-2009
29S 12W 23

29S12230000100 - USA Acct# 1154900
29S12230000200 - Ronald & Kelly La Franche