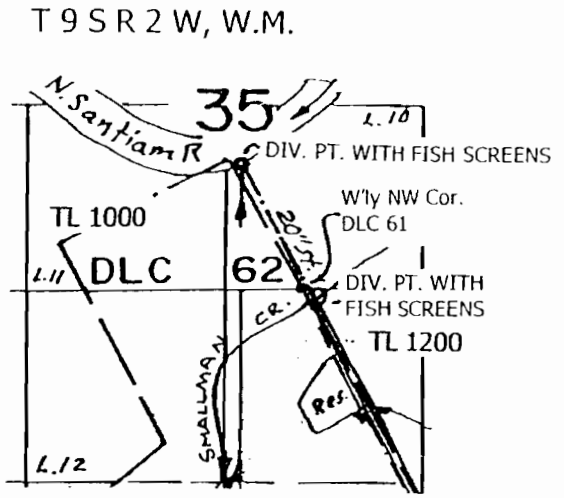
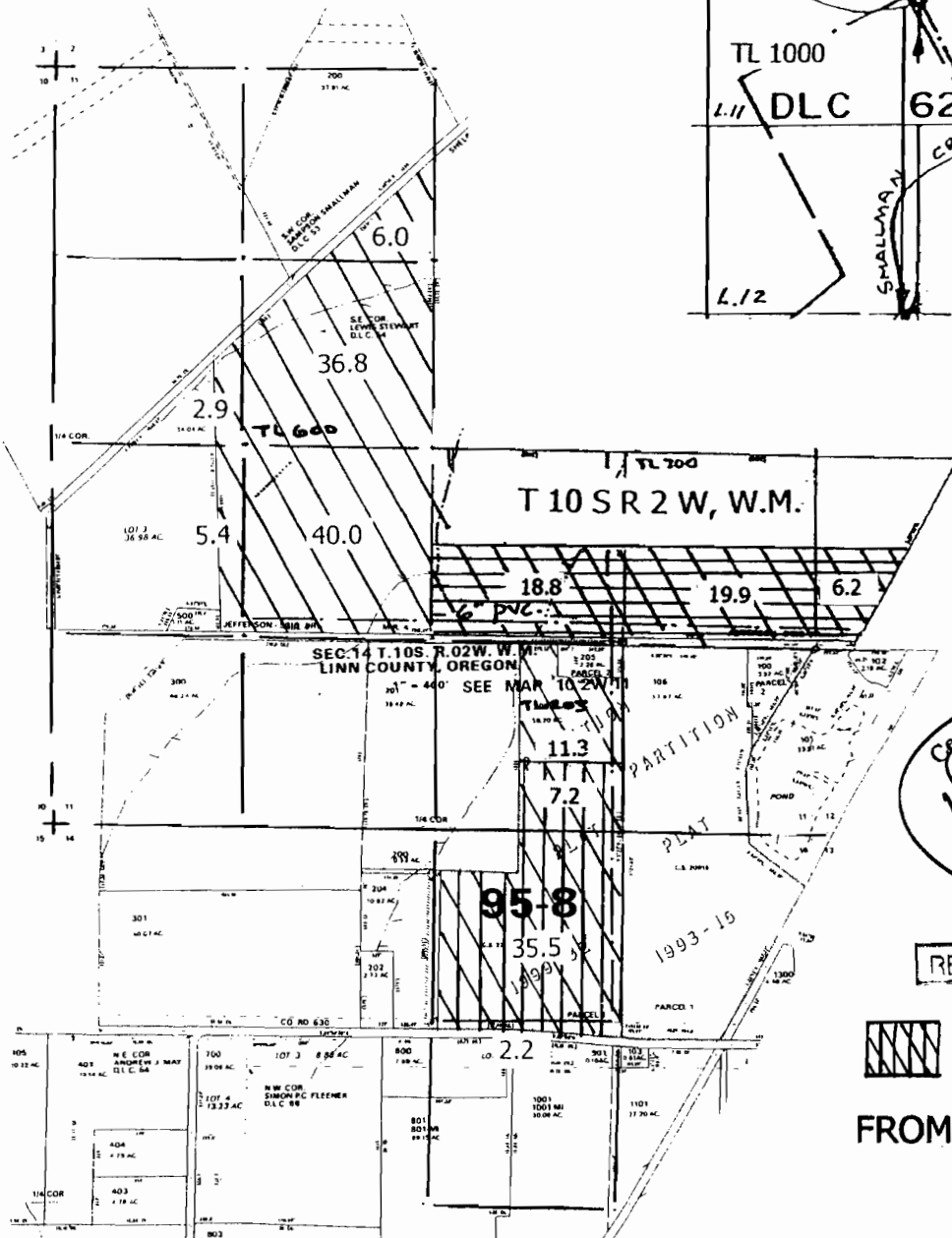
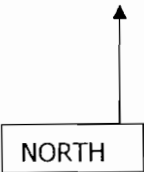
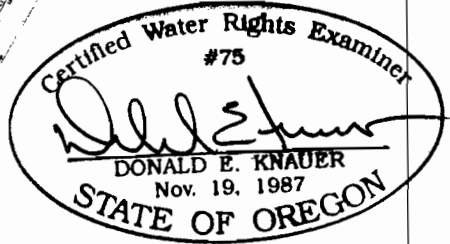


**PERMIT AMENDMENT APPLICATION MAP**  
**MT. JEFFERSON FARMS, INC.**  
**T 9 & 10 S R 2 W, W.M.**  
 Scale 4" = 1 mile

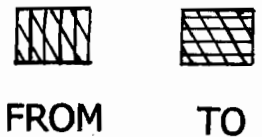


**RECEIVED**

SEP - 9 2009  
 WATER RESOURCES DEPT  
 SALEM, OREGON



RENEWAL DATE: 6/30/2011



N. Santiam Rvr. Div. Pt.: 850' N & 400' W from the W'ly NW corner DLC 61