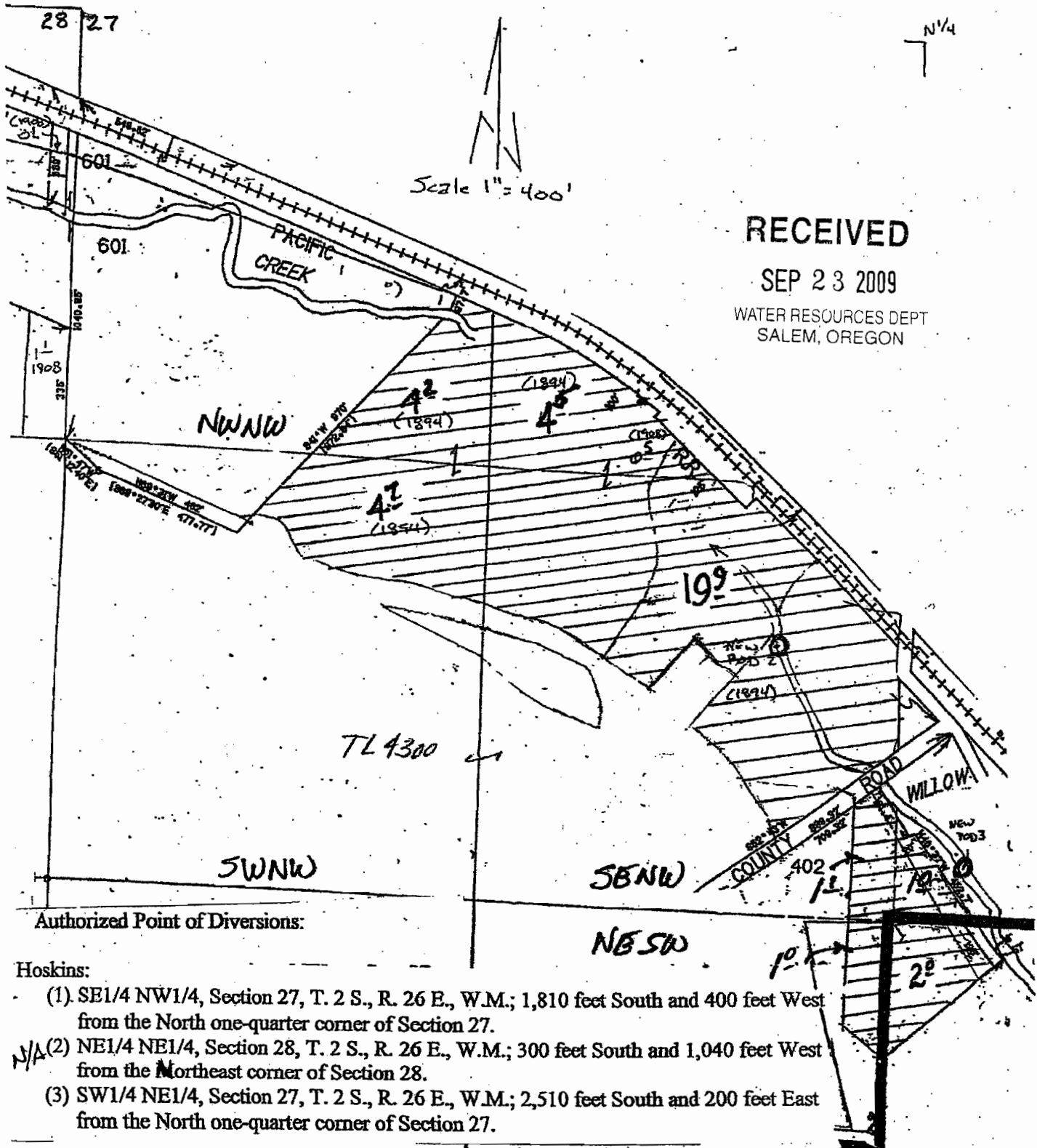


Map #1 -  
HOSKINS

# Township 2 South, Range 26 East, W.M.



RECEIVED

SEP 23 2009

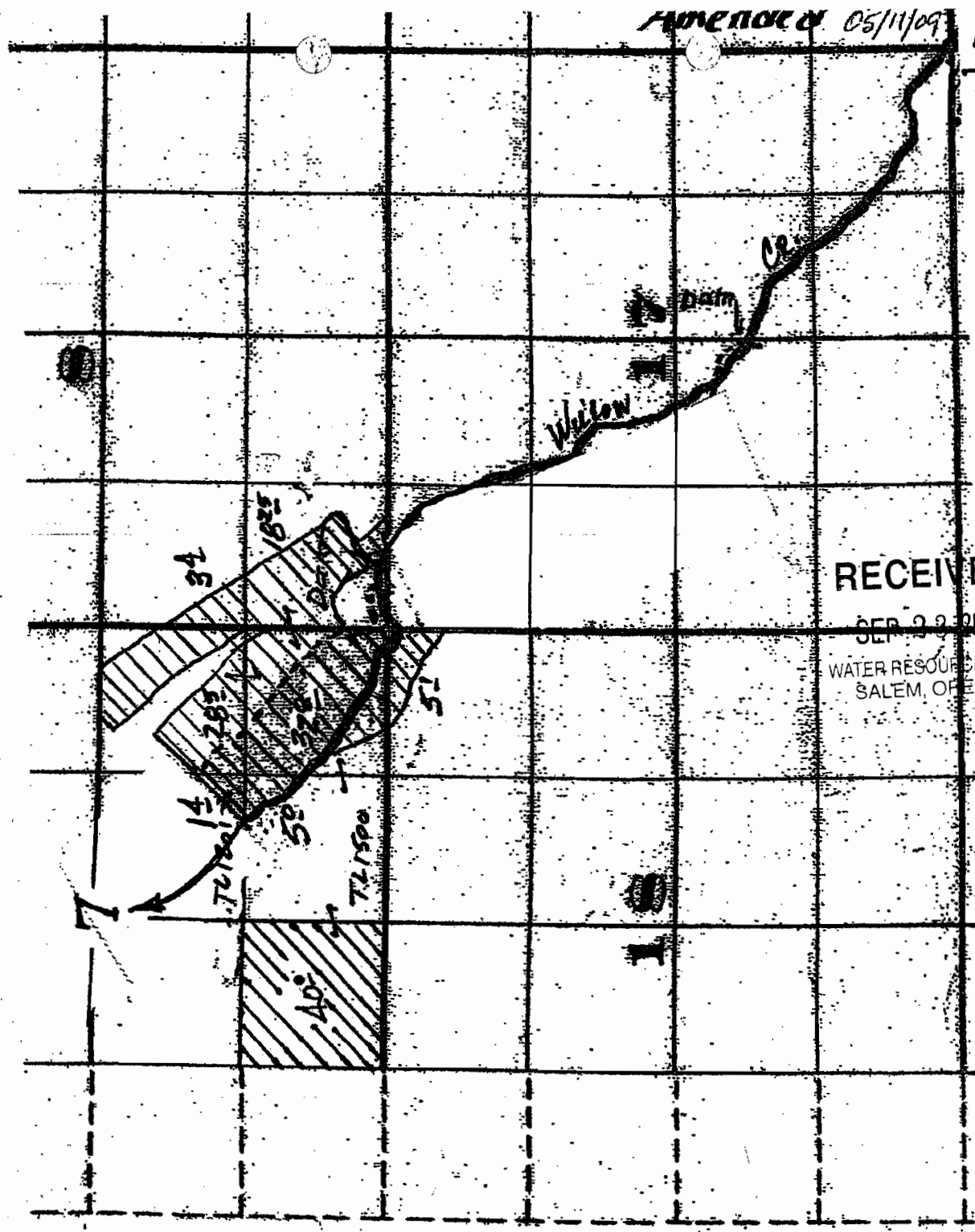
WATER RESOURCES DEPT  
SALEM, OREGON

Authorized Point of Diversions:

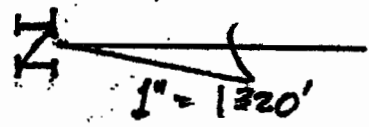
Hoskins:

- (1) SE1/4 NW1/4, Section 27, T. 2 S., R. 26 E., W.M.; 1,810 feet South and 400 feet West from the North one-quarter corner of Section 27.
- N/A (2) NE1/4 NE1/4, Section 28, T. 2 S., R. 26 E., W.M.; 300 feet South and 1,040 feet West from the Northeast corner of Section 28.
- (3) SW1/4 NE1/4, Section 27, T. 2 S., R. 26 E., W.M.; 2,510 feet South and 200 feet East from the North one-quarter corner of Section 27.

AMENDED 05/11/09 MAP 2A  
DAMON



RECEIVED  
SEP 22 2009  
WATER RESOURCES DEPT  
SALEM, OREGON

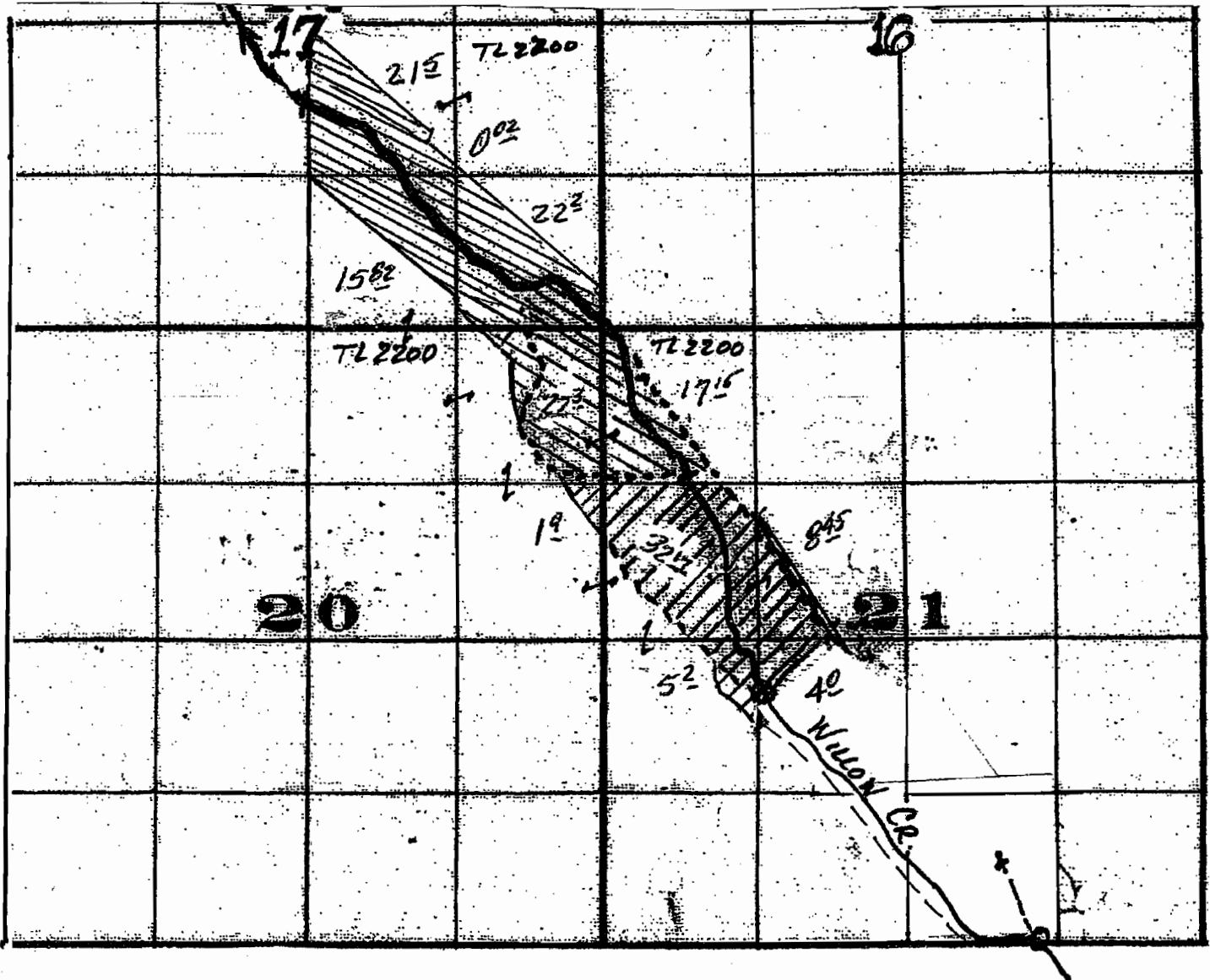



T. 25., R. 26E., WM.  
POD - 550' E. & 100' N. from SW Cor. Sec. 8

T.2 S., R.26 E., W. M.

Amended  
9/23/09

MAP 2B  
DAMON



N  
  
 1" = 1320'

POD's - 2150' N. & 1300' W.; both from S 1/4 Cor. Sec 21  
 50' N. & 1150' E.;

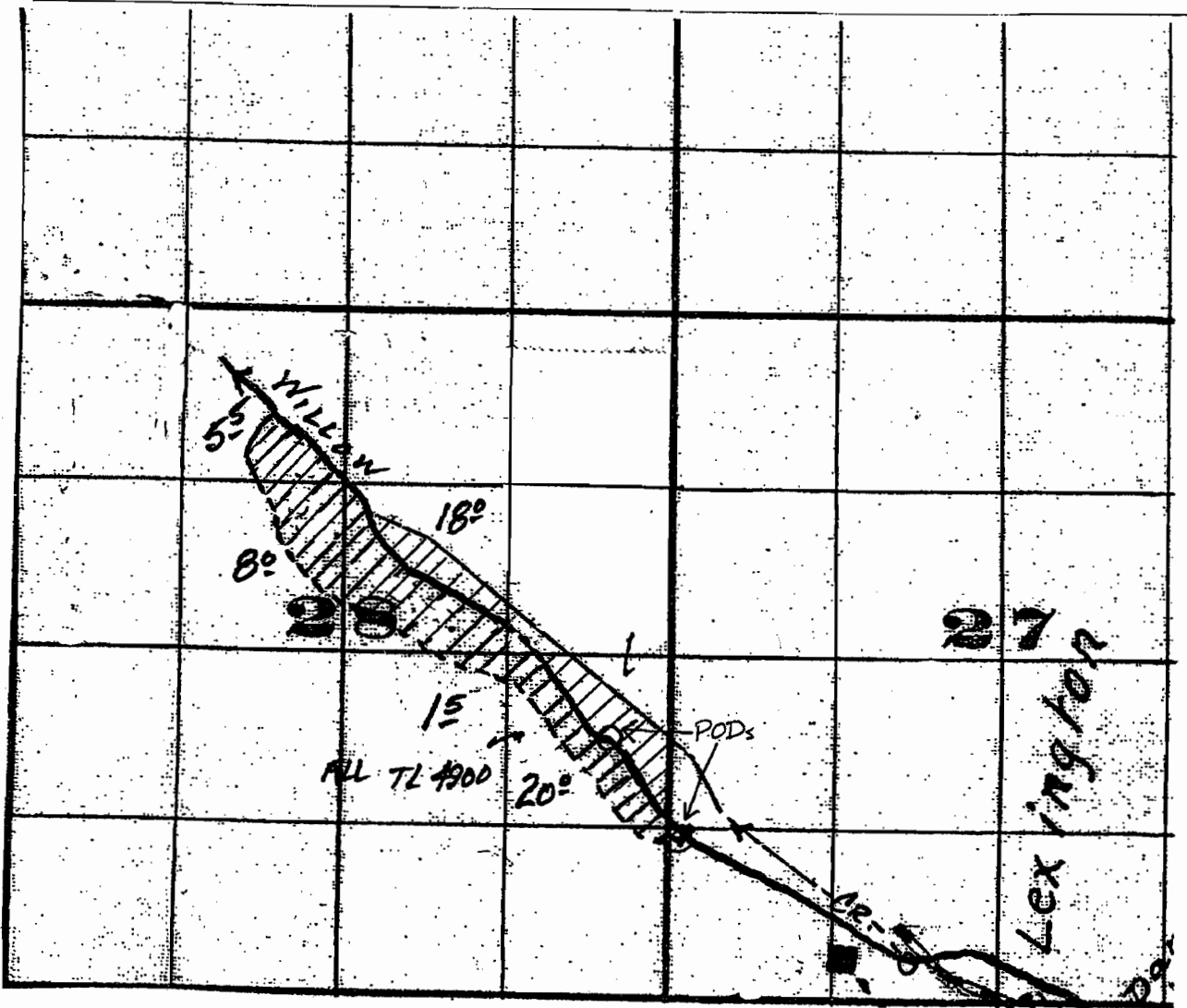
RECEIVED

SEP 23 2009

WATER RESOURCES DEPT  
SALEM, OREGON

Amended 9/23/09 MAP 3A  
NEIFFER

T. 1 S., R. 25 E., W.M.



N



1" = 1520'

PODs - 1200' N. & 120' E.; both from SW Cor. Sec. 27  
1730' N. + 580' W.;

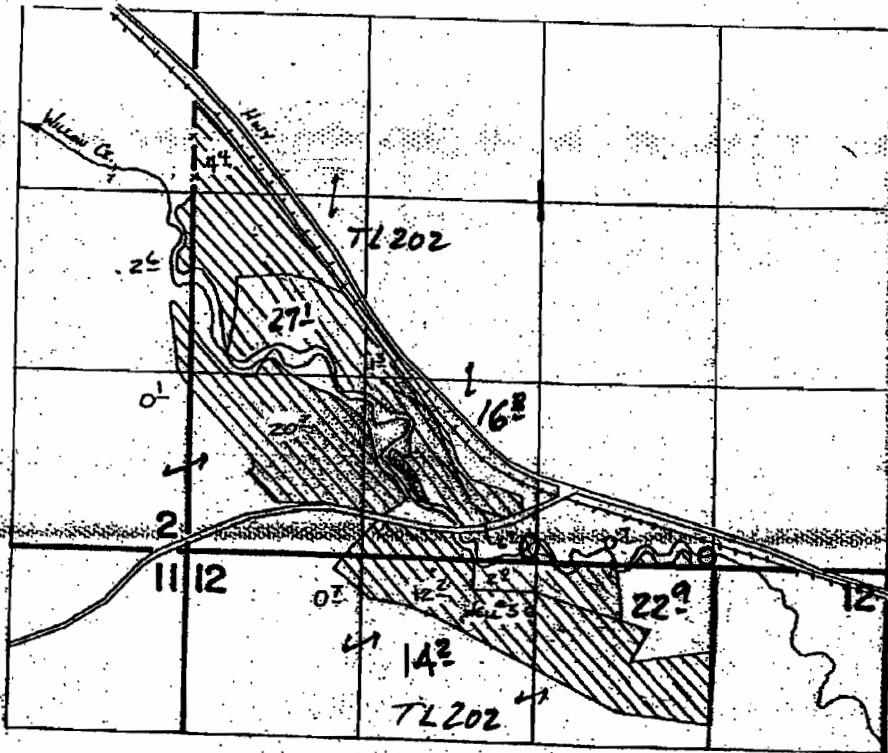
RECEIVED

SEP 23 2009

WATER RESOURCES DEPT  
SALEM, OREGON

MAP 3B  
NEPPER

T. 1S., R. 23E., W.M.



Well Loc: 340'S. & 2580'E FROM NW Cor Sec 12

POB - 100'N. & 1340'W. from SE Cor. Sec. 1



SCALE 1" = 1320'

RECEIVED

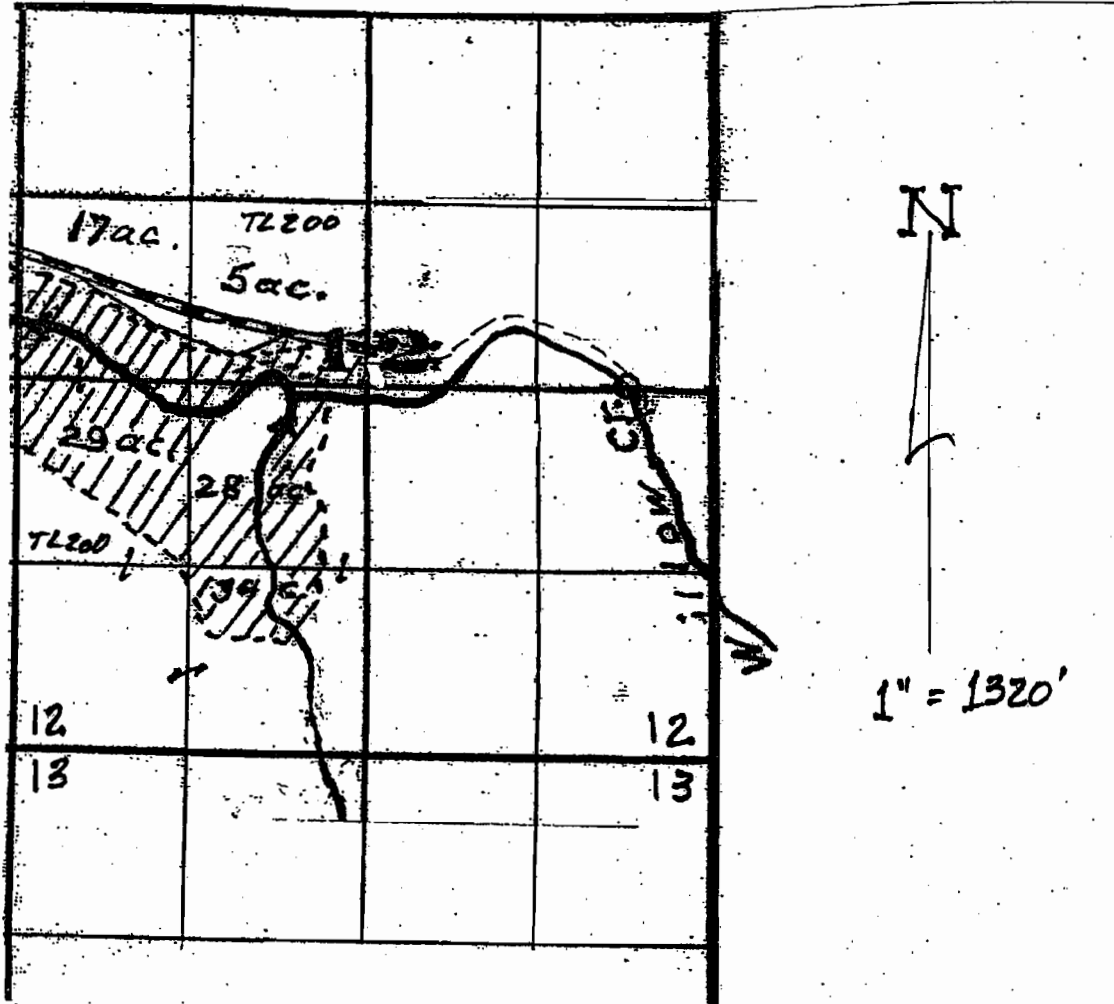
SEP 23 2009

WATER RESOURCES DEPT  
SALEM, OREGON

Amended  
9/23/09

MAP 4  
Mc ELLIGOTT

T. 1 S, R. 24 E., W. M.

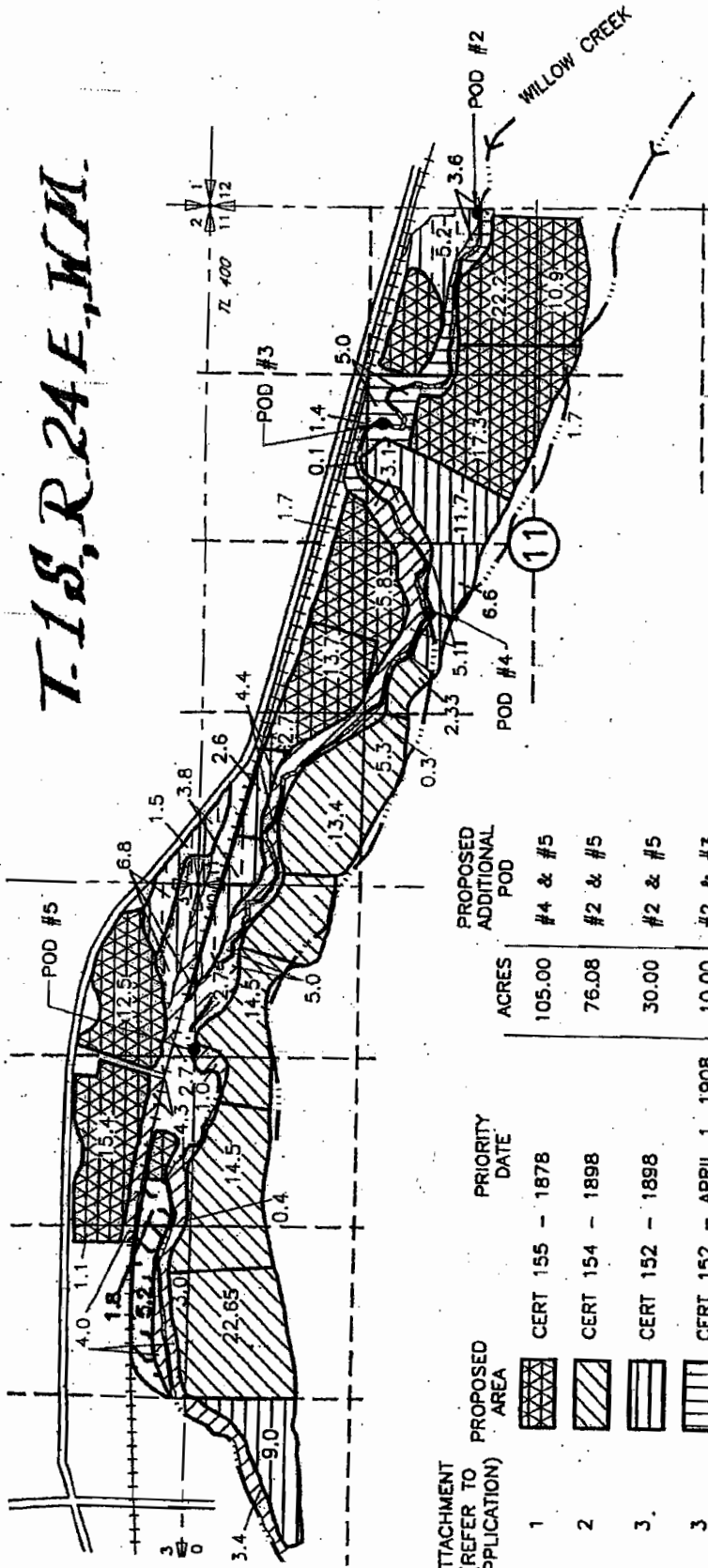


POD - 50' N. & 1960' E. from Center Sec 12.

RECEIVED  
SEP 23 2009  
WATER RESOURCES DEPT  
SALEM, OREGON

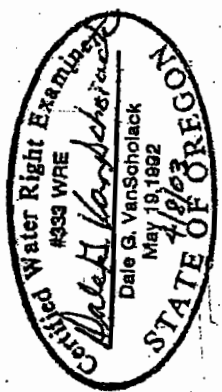
TO

T-18, R-24 E., W.M.



Amended  
05/11/09

MAP 5  
EMERALD  
RANCHES



SOM Consultants, Inc.  
A Tetra Tech Company  
DRAWING: H:\CAD\AG\3522\160\3522160TR.dwg  
PRINTED BY: rogerw on 04/03/03 08:38 AM

ATTACHMENT (REFER TO APPLICATION)	PROPOSED AREA	PRIORITY DATE	ACRES	PROPOSED ADDITIONAL POD
1	CERT 155 - 1878	1878	105.00	#4 & #5
2	CERT 154 - 1898	1898	76.08	#2 & #5
3	CERT 152 - 1898	1898	30.00	#2 & #5
3	CERT 152 - APRIL 1, 1908	APRIL 1, 1908	10.00	#2 & #3
4	CERT 124 - 1906	1906	7.00	#2, #3 & #5
5	CERT 79486 - 1908	1908	20.00	#2, #4 & #5
6	CERT 962 - DEC 12, 1912	DEC 12, 1912	33.31	#2, #4 & #5

RECEIVED

SEP 23 2009

WATER RESOURCES DEPT  
#2 2120'S & 30'W FROM THE NE COR OF SECTION 11  
#3 PETTY'S DITCH 1400'S & 1000'E FROM THE N 1/4 COR OF SECTION 11  
#4 HAMMERS & HOWARD DITCH - 1750'S & 2060'E FROM THE NW COR OF SECTION 11  
#5 PUMP 20'S & 1240'W FROM THE NE CORNER OF SECTION 10

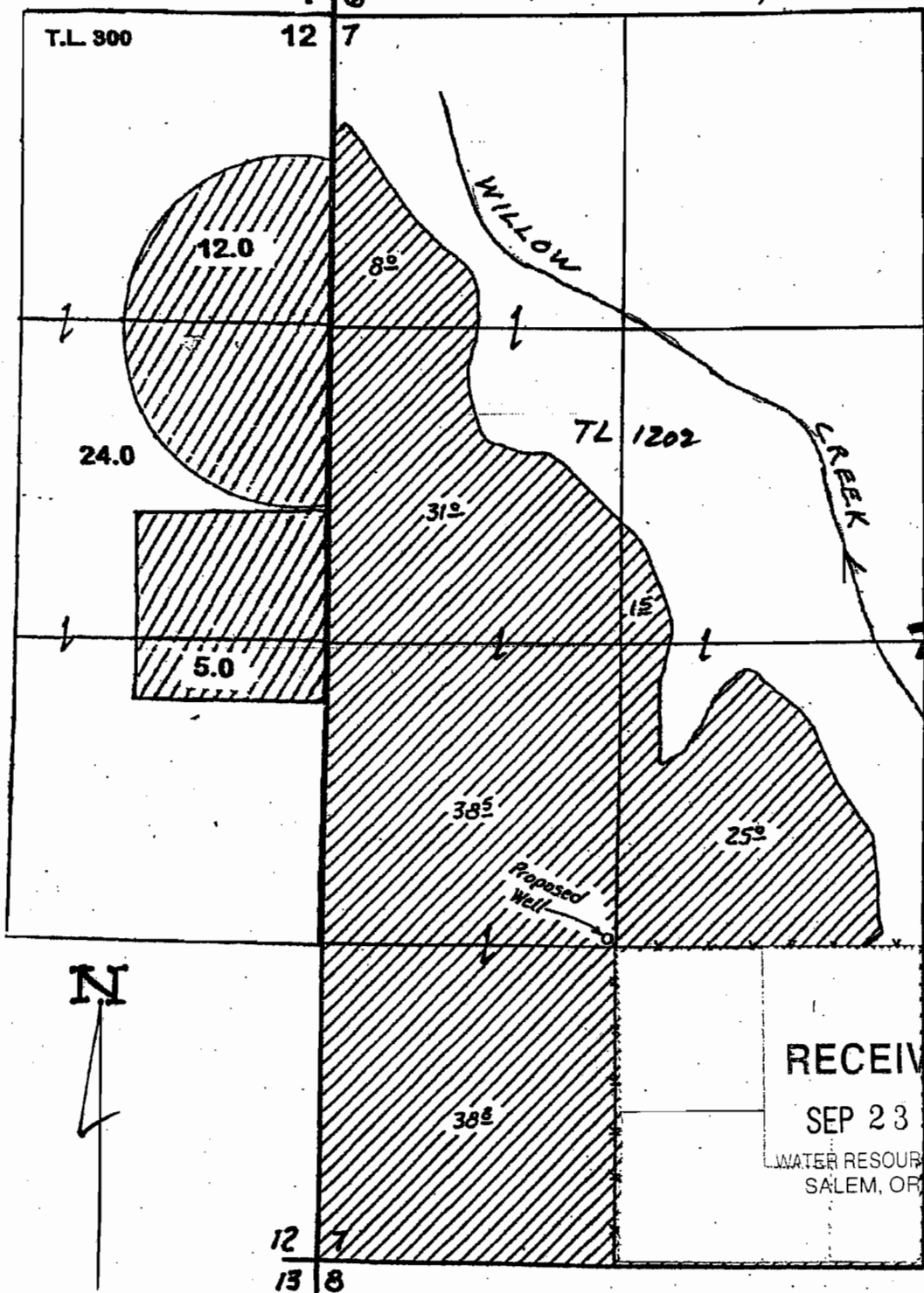
NOTE: THE PURPOSE OF THIS MAP IS TO IDENTIFY THE APPROXIMATE LOCATION OF THE WATER RIGHT. IT IS NOT INTENDED TO PROVIDE INFORMATION PERTAINING TO THE LOCATION OF PROPERTY OWNERSHIP BOUNDARY LINES.

T-9454

APPLICATION MAP

MAP 6A  
THOMPSON

T. 2 S., R. 25 & 26 E., NM



1" = 660'

RECEIVED

SEP 23 2009

WATER RESOURCES DEPT  
SALEM, OREGON

POD's - SEE MAP 6B

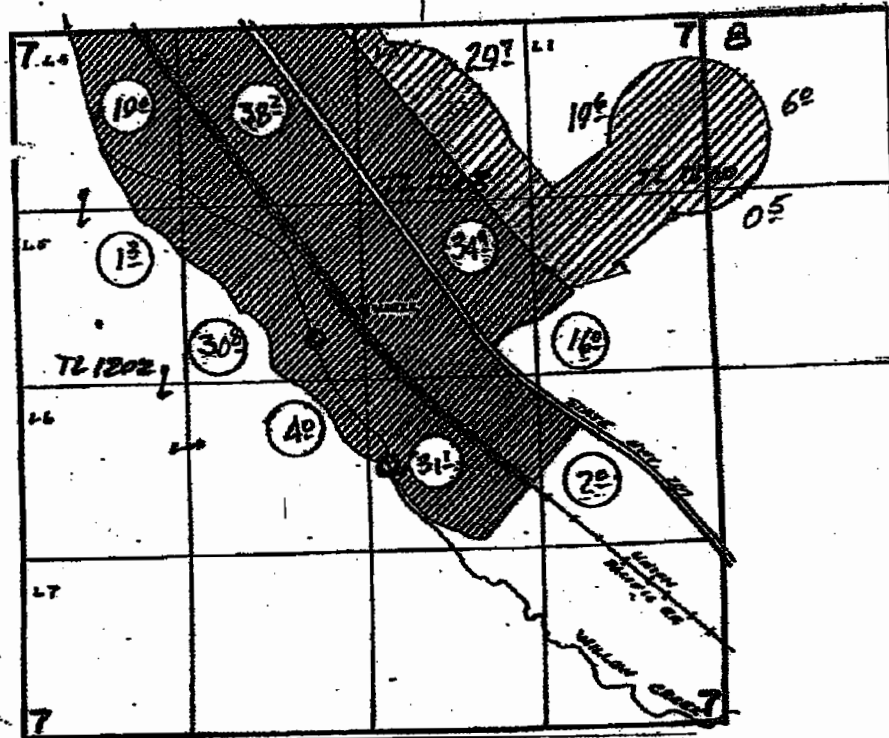


Amended  
05/11/09

MAP 6B  
THOMPSON

T.2S., R.26E., W.M.

N  
1" = 1320'



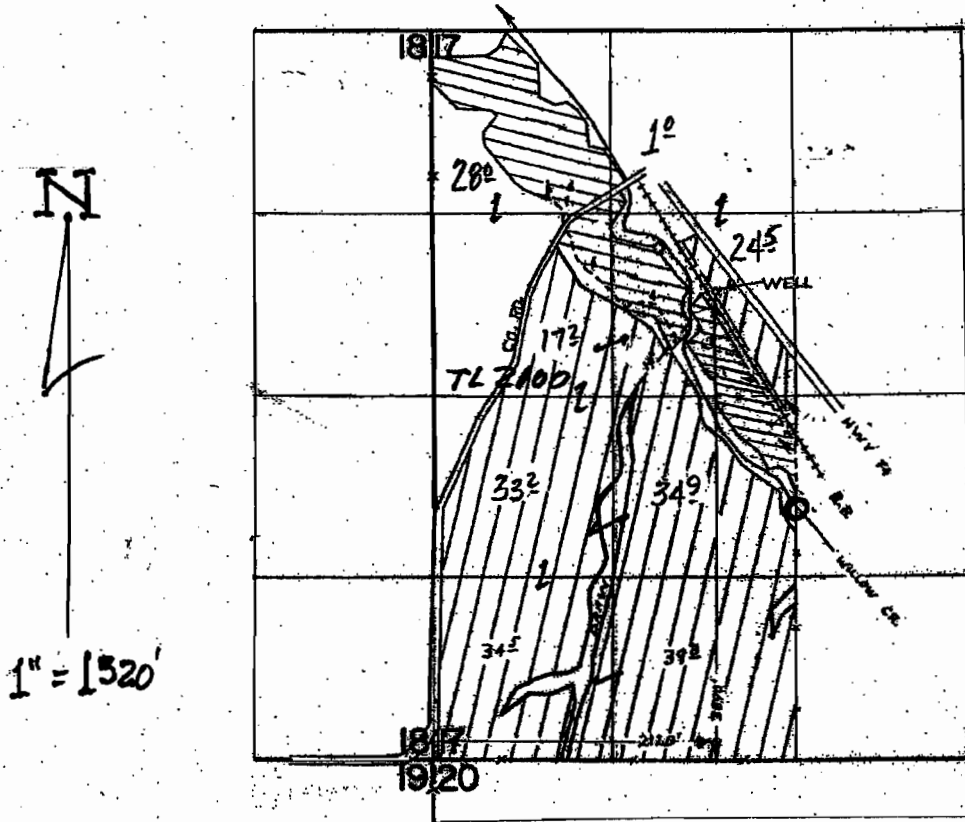
POB - 2350' S. & 3040' W.; from NE Cor. Sec 7

RECEIVED

SEP 23 2009  
WATER RESOURCES DEPT  
SALEM, OREGON

MAP GC  
THOMPSON

T.2S.R26E.W.M.



POD - 800' S. from Center Sec. 17

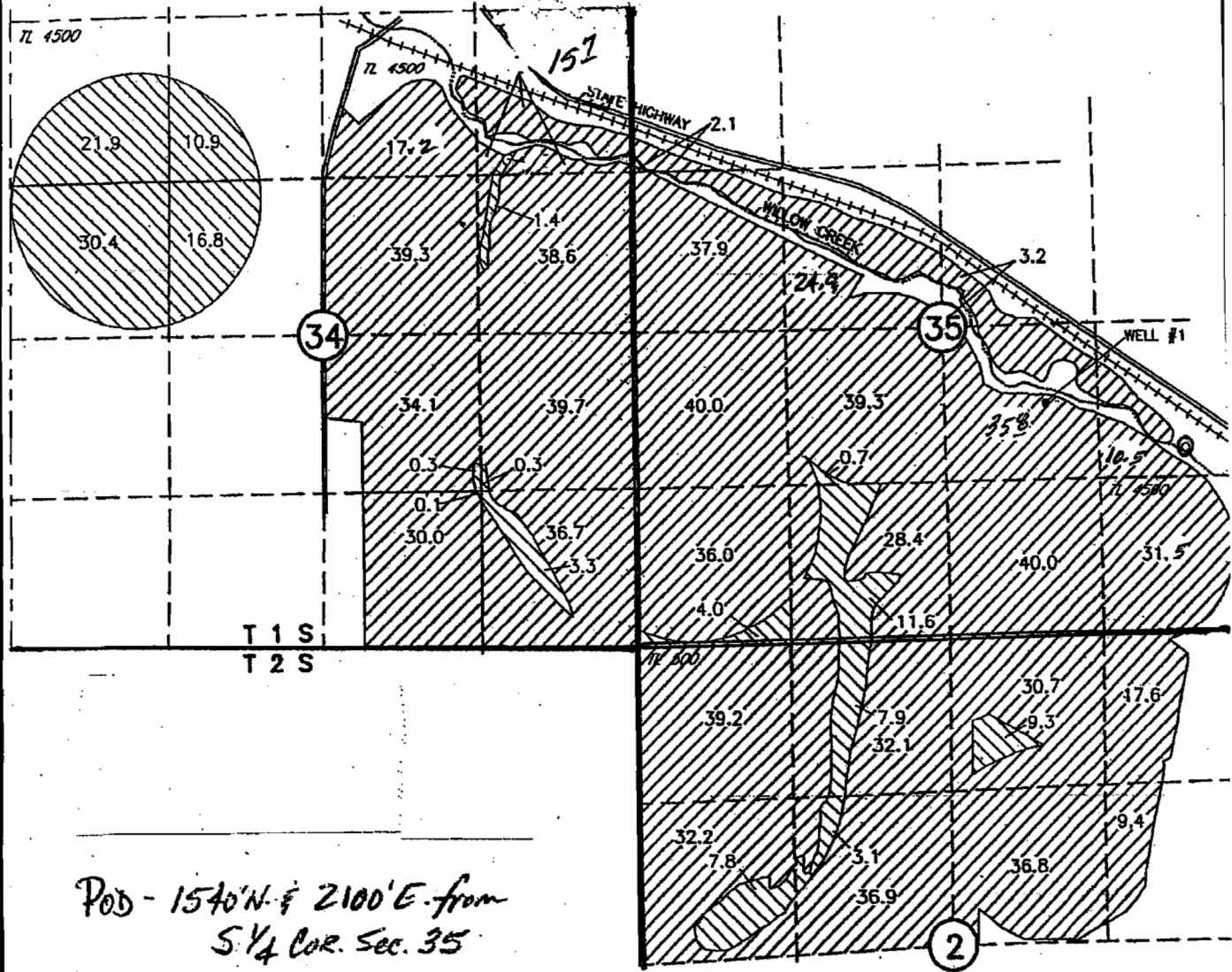
RECEIVED

SEP 23 2009

WATER RESOURCES DEPT  
SALEM, OREGON

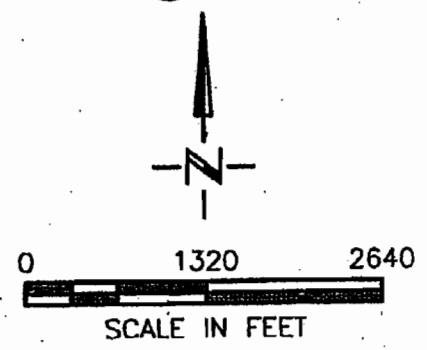
MAP 7  
MEYER

T1&2S, R25E WM



POB - 1540' N. & 2100' E. from  
S 1/4 COR. Sec. 35

RECEIVED  
SEP 23 2009  
WATER RESOURCES DEPT  
SALEM, OREGON

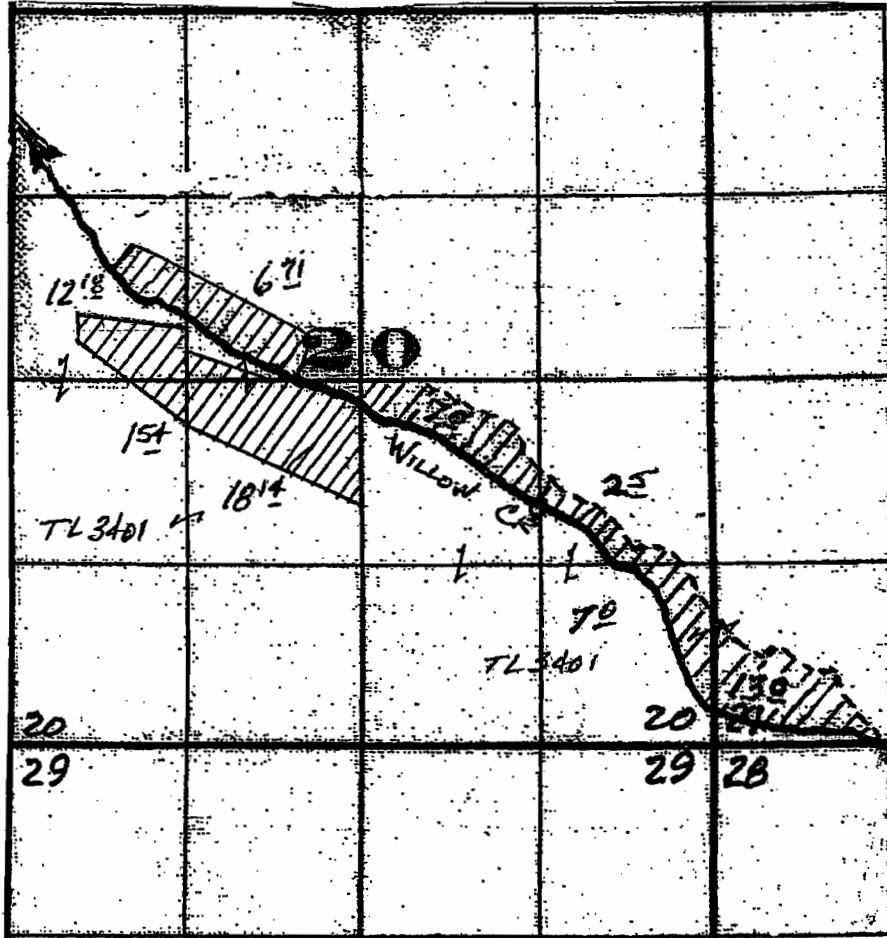


NOTE:

Amended  
9/23/09

MAP 8  
HARRISON

T. 1 S., R. 25 E., W.M.



N

1" = 1320'

POD's - 560'S. & 1920' E. > both from SE Cor. Sec. 20  
 1695' N. & 1325' W.

RECEIVED  
 SEP 23 2009  
 WATER RESOURCES DEPT  
 SALEM, OREGON

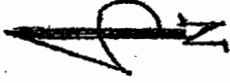
**T. 1 & 2 S., R 25 E., W.M.**

*Amended*  
05/11/09  
9/23/09

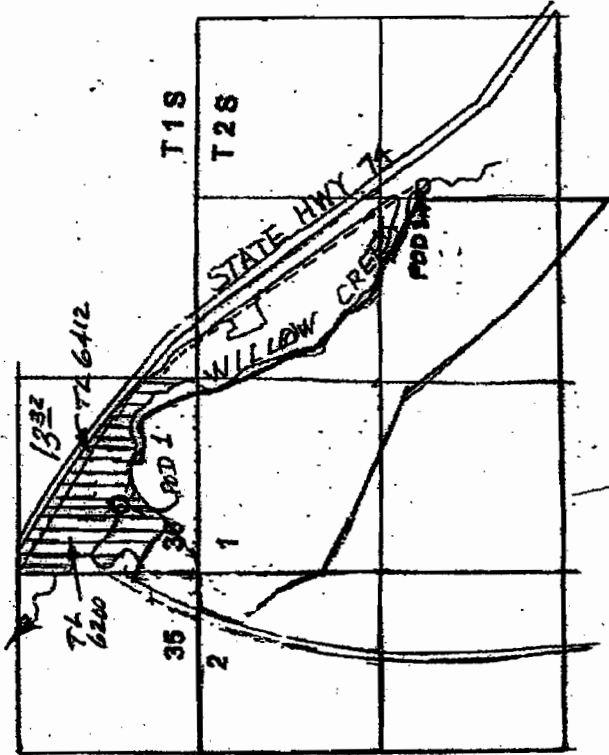
MAP 9  
TEMPLE

**RECEIVED**

SEP 23 2009  
WATER RESOURCES DEPT  
SALEM, OREGON



SCALE 1" = 1320'

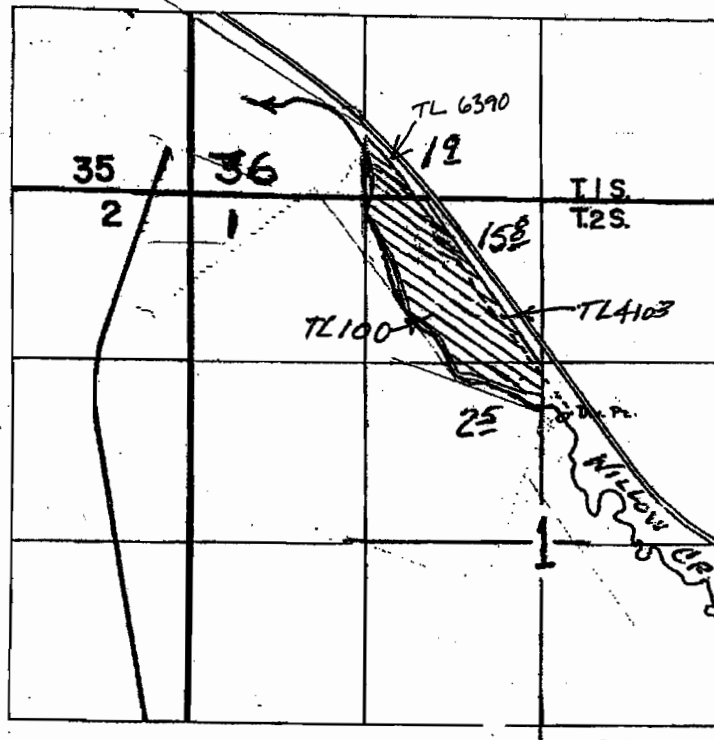


DIV PT 1- LOC 560' N & 480' E FROM SW CORNER SECTION 36. AUTHORIZED POD  
DIV PT 2- LOC 910' N & 140' E FROM CENTER SECTION 1. AUTHORIZED POD

Amended  
9/23/09

MAP 10  
SHATTUCK/  
BARROW

T.1 & 2S., R. 25E., W. M.



Dir. Pt. Loc: 920'N & 160'E FROM CENTER SEC. 1

RECEIVED  
SEP 23 2009  
WATER RESOURCES DEPT  
SALEM, OREGON