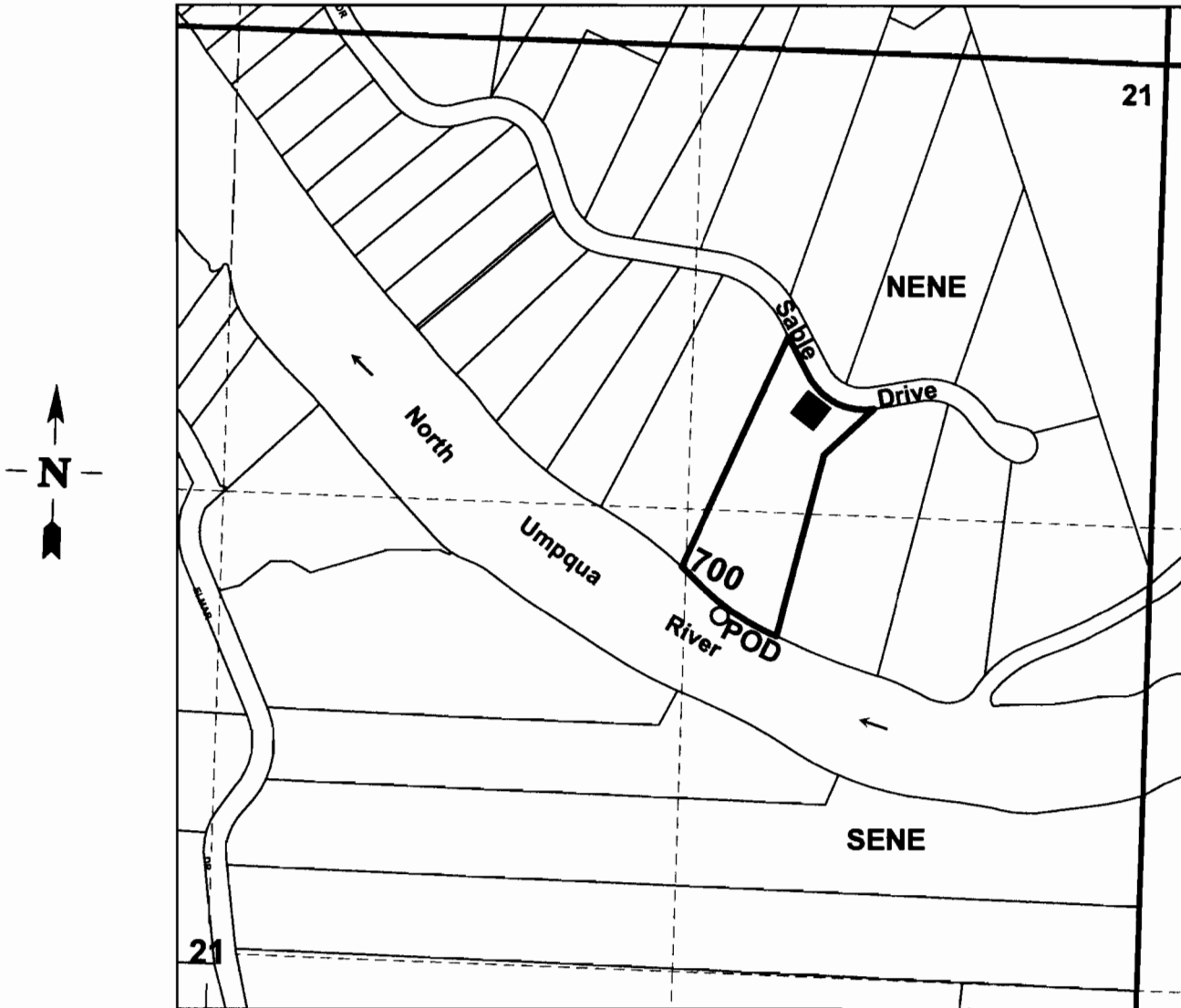


Application Map for  
Robert Walker

**SEC.21 T.26S. R.5W. W.M.**  
**DOUGLAS COUNTY**  
**Scale 1" = 500'**



Point of Diversion is 1625 ft. south and 1220 ft. west from the  
NE corner of Section 21.

**RECEIVED**

AUG 5 0 2011

WATER RESOURCES DEPT  
SALEM, OREGON

S-07752