

Revised map

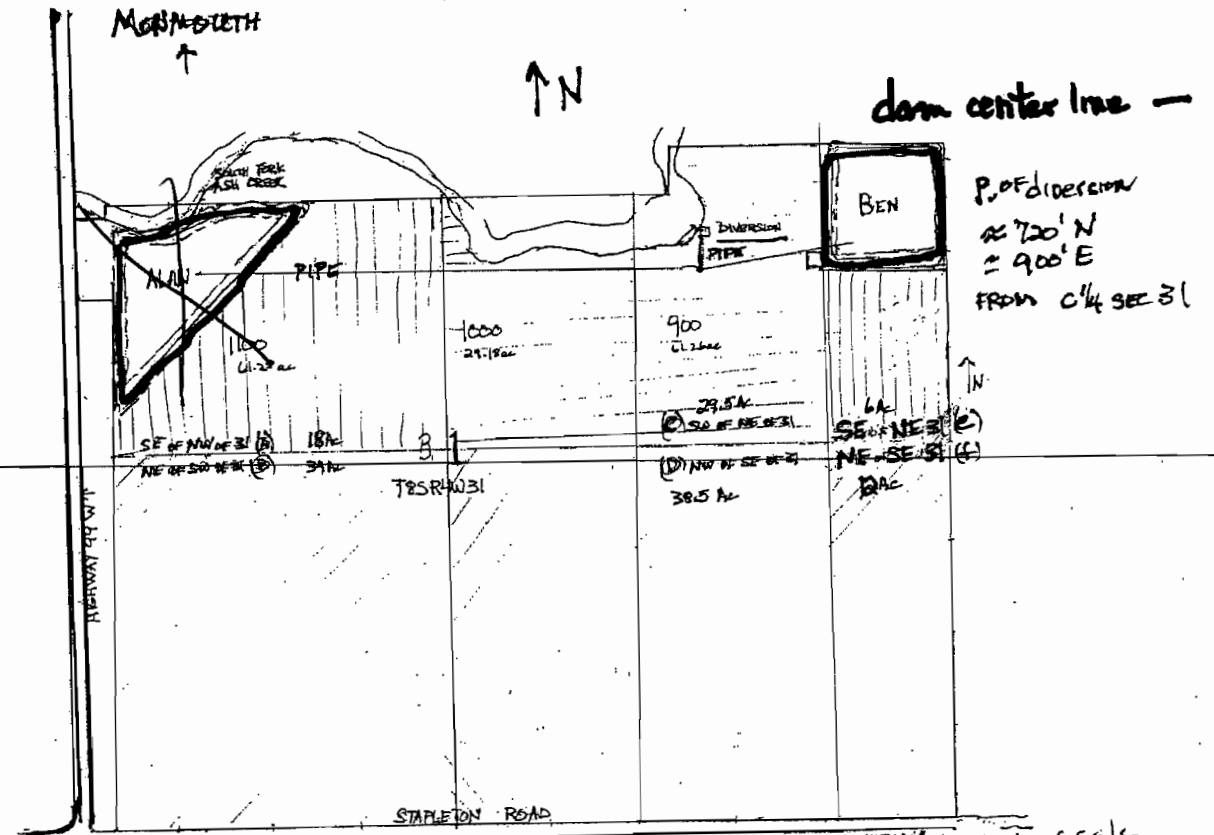
Align West - UNDER CONSTRUCTION NOW (9/26/12)

~~Align East - PENDING, SUBJECT TO PERMITTING FROM POLK COUNTY RE FLOOD PLAIN AND RIPARIAN SET BACKS~~

RECEIVED

SEP 26 2012

WATER RESOURCES DEPT
SALES OFFICE



P.O.F. DIMENSION
 ≈ 700' N
 ≈ 900' E
 FROM C¹/₄ SEC 31

"ASH CREEK FARM" Peter Dimadala

~~PROPORTION~~ not to scale

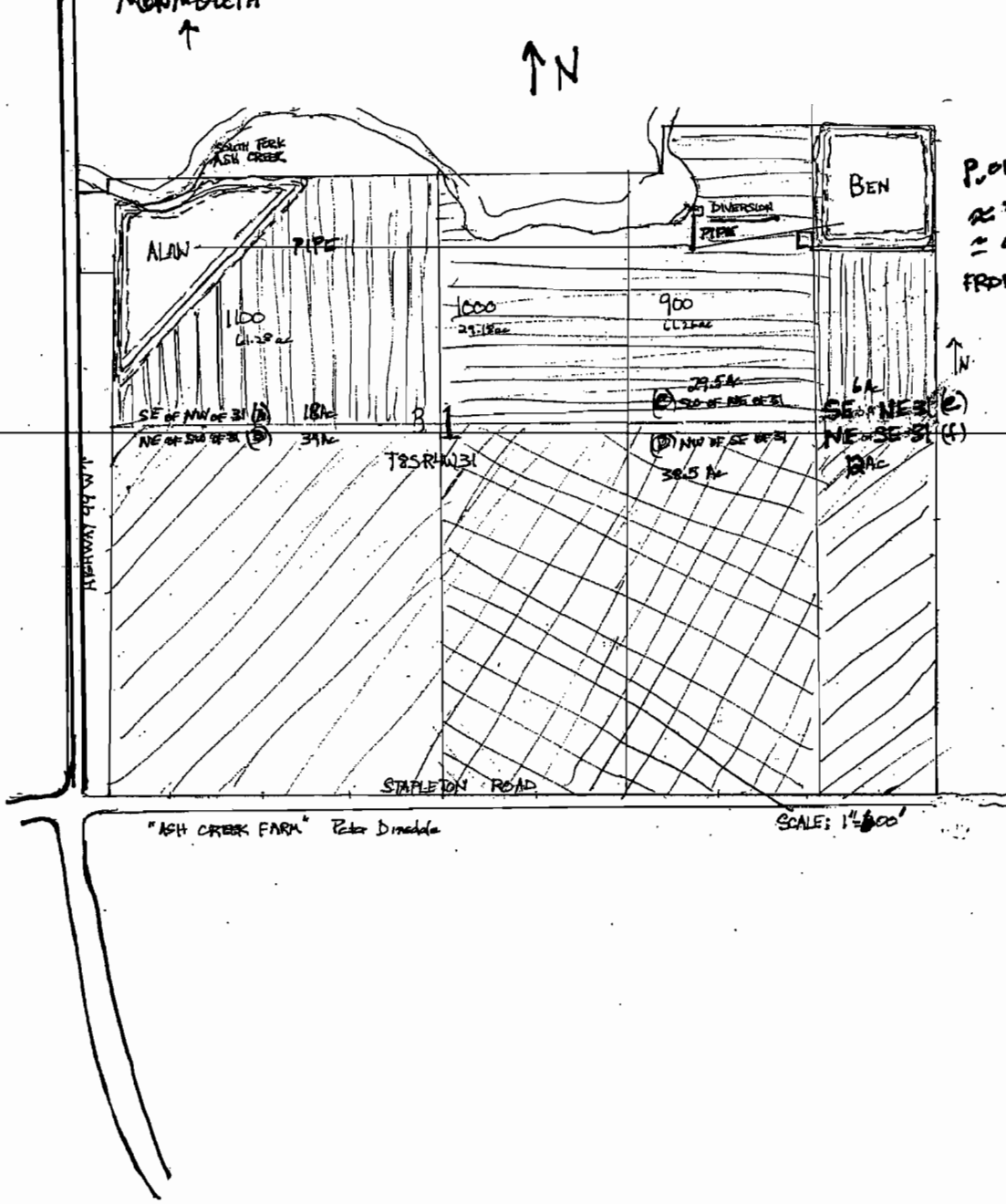
~~Alan - SW CORNER - 255' N
 ~ 1130' W
 FROM C¹/₄ SEC 31~~

1330'
 Ben - SW CORNER ~ 1270' E
 ~ 670' N
 FROM C¹/₄ SEC 31

RECEIVED

APR 12 2012

WATER RESOURCES DEPT
 SALEM, OREGON



P. of direction
 ≈ 720' N
 ≈ 900' E
 FROM C 1/4 SEC 31

"ASH CREEK FARM" Peter Dineola

RECEIVED

APR 05 2012

WATER RESOURCES DEPT
 SALEM, OREGON

R-87793