

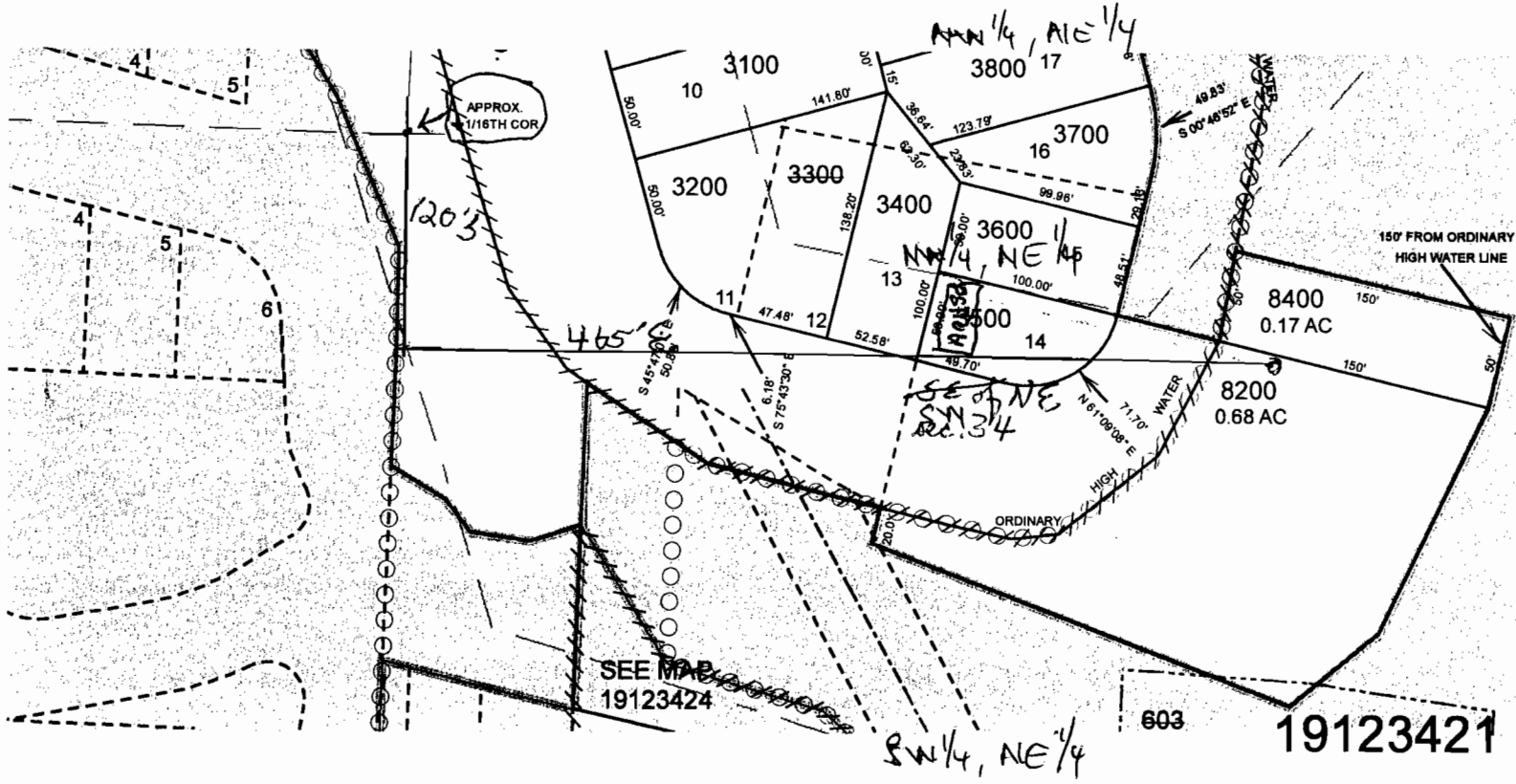
WORK COPY

ADDED TO FILE *YB*



scale 1" = 100'

S-87204

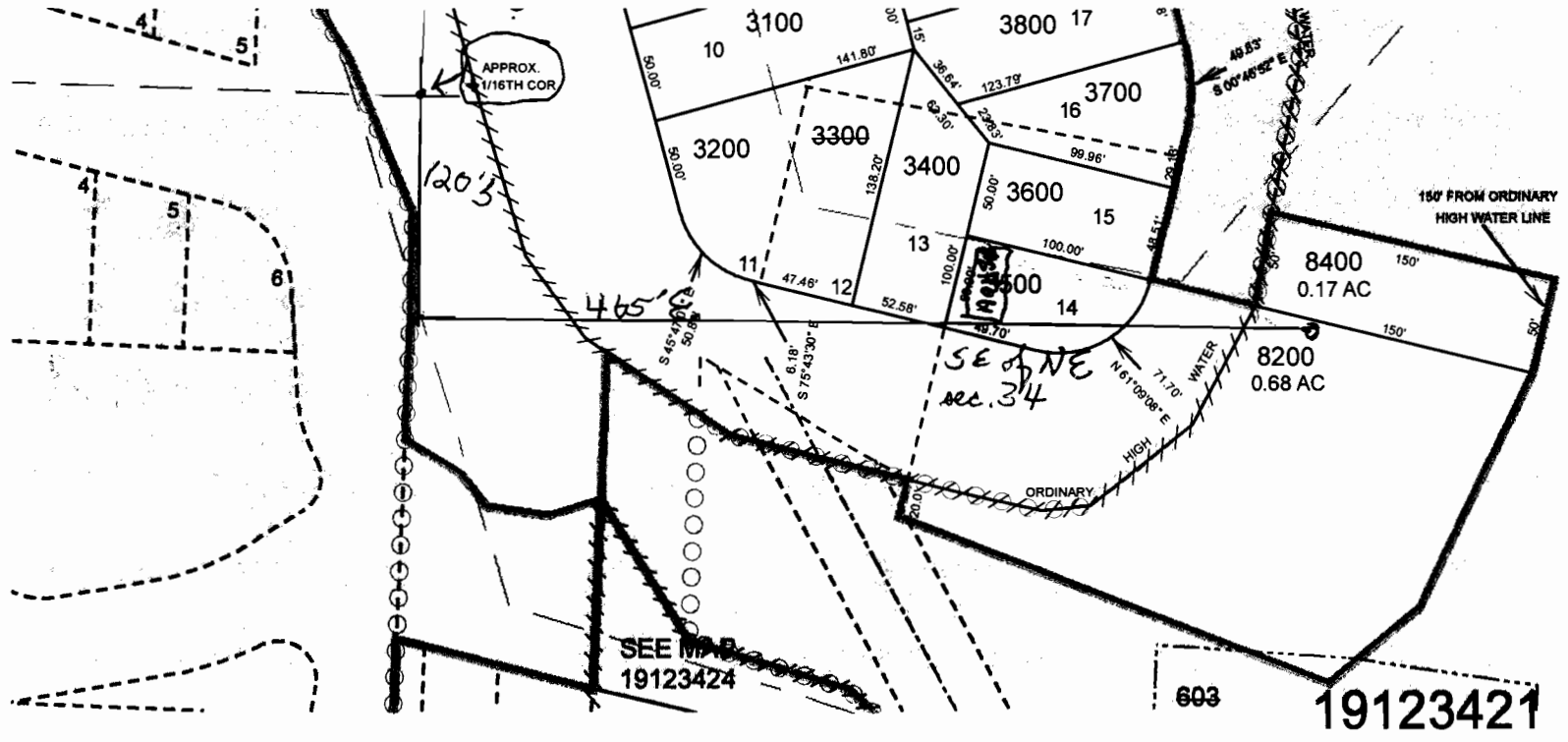


19-12-34-21-03500
120'S 465' E of 1/16# cor.

RECEIVED
 APR 3 0 2012
 WATER RESOURCES DEPT
 SALEM, OREGON

5-81204

N
scale 1" = 100'



19-12-34-21-03500
120'S 465' E of 1/16th cor.

RECEIVED
APR 30 2012
WATER RESOURCES DEPT
SALEM, OREGON

N.E. 1/4 N.W. 1/4 SEC. 34 T.19S. R.12W. W.M.
Lane County

1" = 100'

FOR ASSESSMENT AND
TAXATION ONLY

SEE MAP
19122730

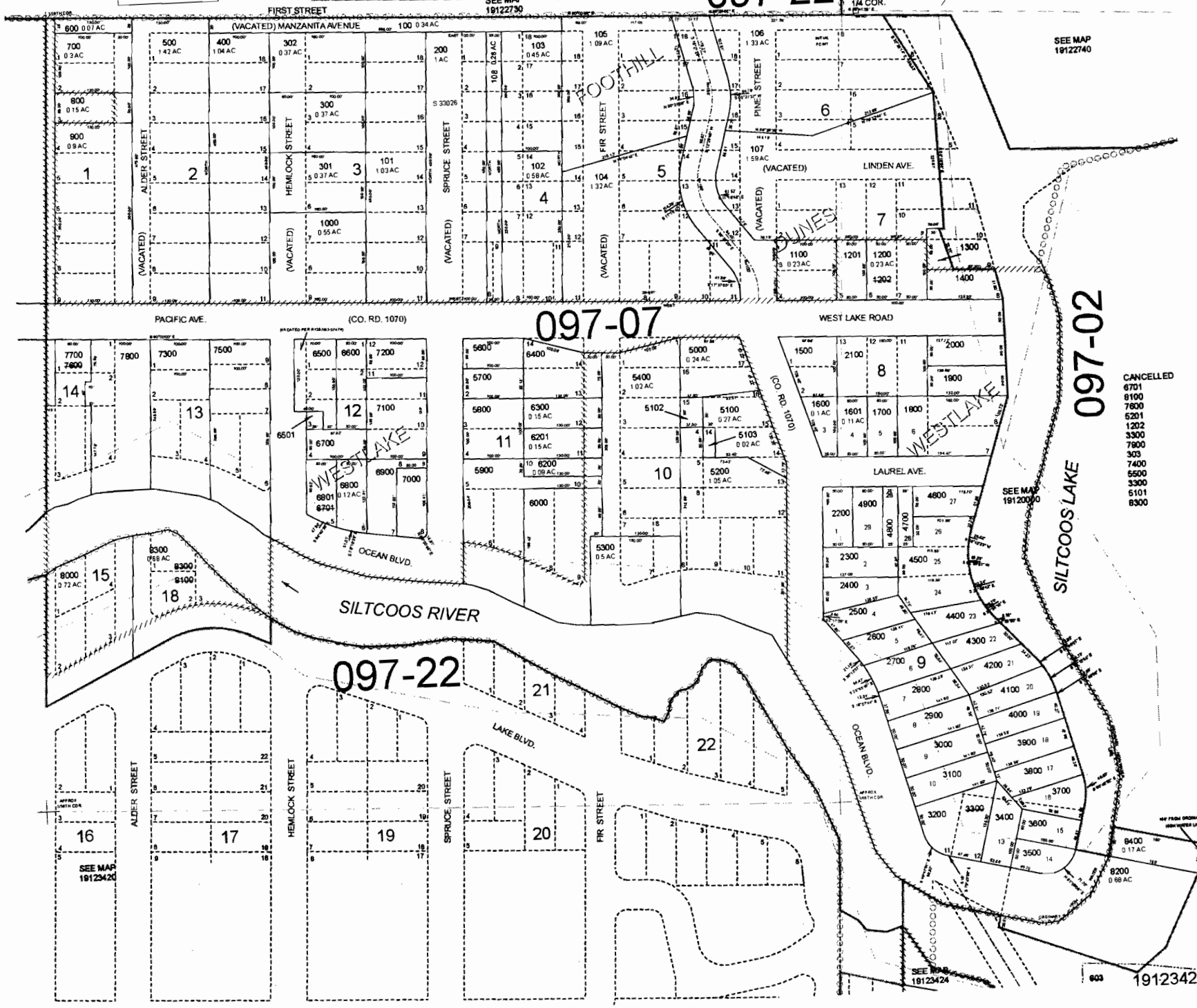
097-22

APPROX.
1/4 COR.

19123421

IC:3/16/06 - 2012-03-29 09:59

REVISIONS
08/16/2008 LC #1143 - CORRECT MAP TO 015
10/18/2008 LC #1142 - CORRECT MAP TO 19123420/2001
08/16/2007 LC #1140 - CORRECT T.L. MAP FROM 19123420
08/16/2007 LC #1133 - CORRECT T.L. MAP FROM 19123420
12/27/2007 LC #1133 - CORRECT T.L. MAP FROM 19123420
08/20/2008 LC #1113 - CORRECT T.L. MAP FROM 19123420
03/28/2012 LC #1113 - ADD W/ISSUED LOT NO'S



- CANCELLED
- 6701
 - 8100
 - 7600
 - 5201
 - 1202
 - 3300
 - 7800
 - 303
 - 7400
 - 5500
 - 3300
 - 5101
 - 8300

097-02

SILCOOS LAKE

SEE MAP
19120000

SEE MAP
19123424

603 19123421