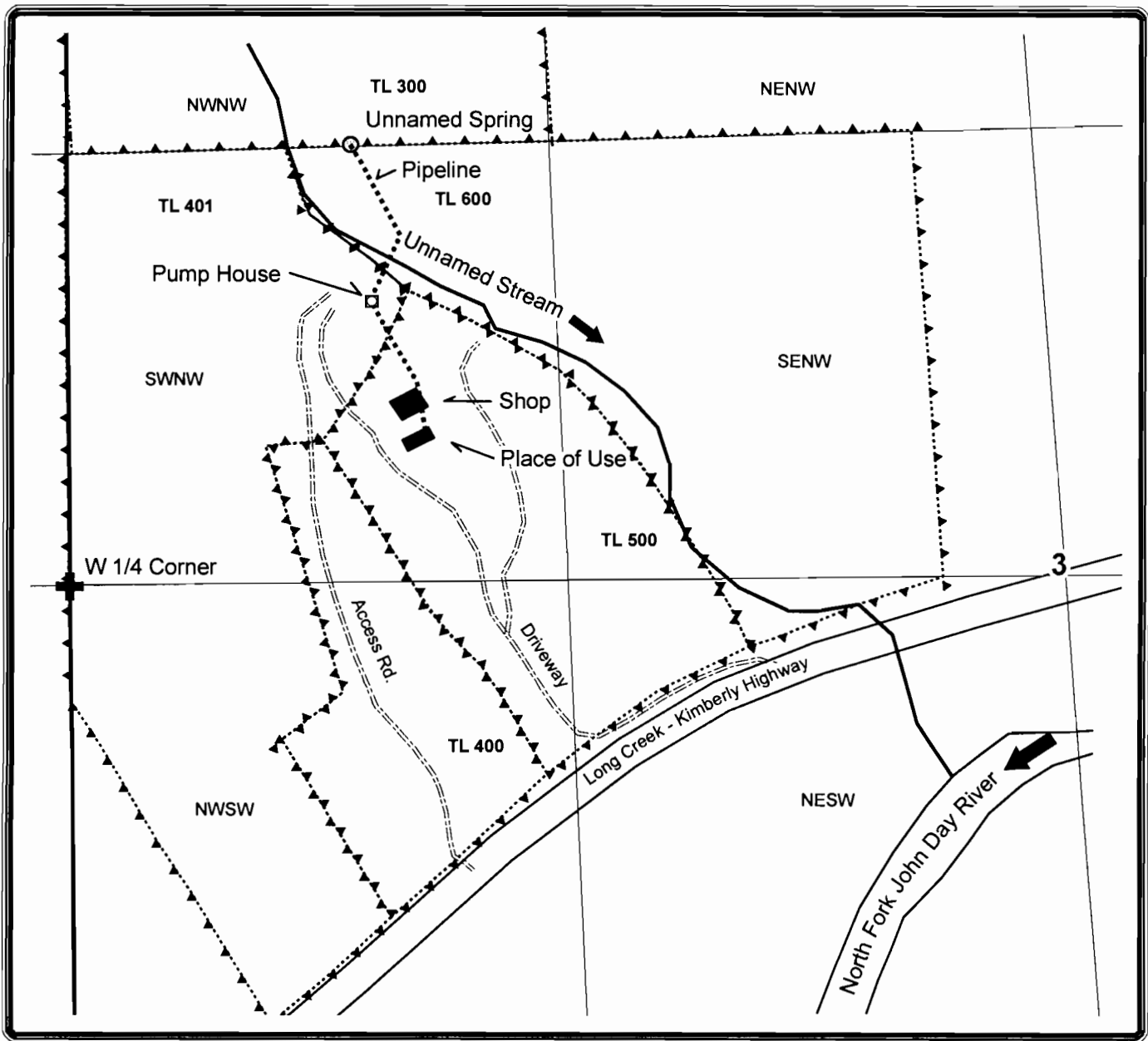


# Application Map For Larry Blakeslee

## T. 9S R. 27E W.M. Section 3



Spring is located approximately 1080 feet north and 710 feet east of the west 1/4 corner section 3, T. 9S R. 27E W.M. being within the NW1/4 NW1/4 section 3, T. 9S R. 27E W.M.



1 inch = 400 feet

**RECEIVED**

JUN 03 2010

WATER RESOURCES DEPT  
SALEM OREGON