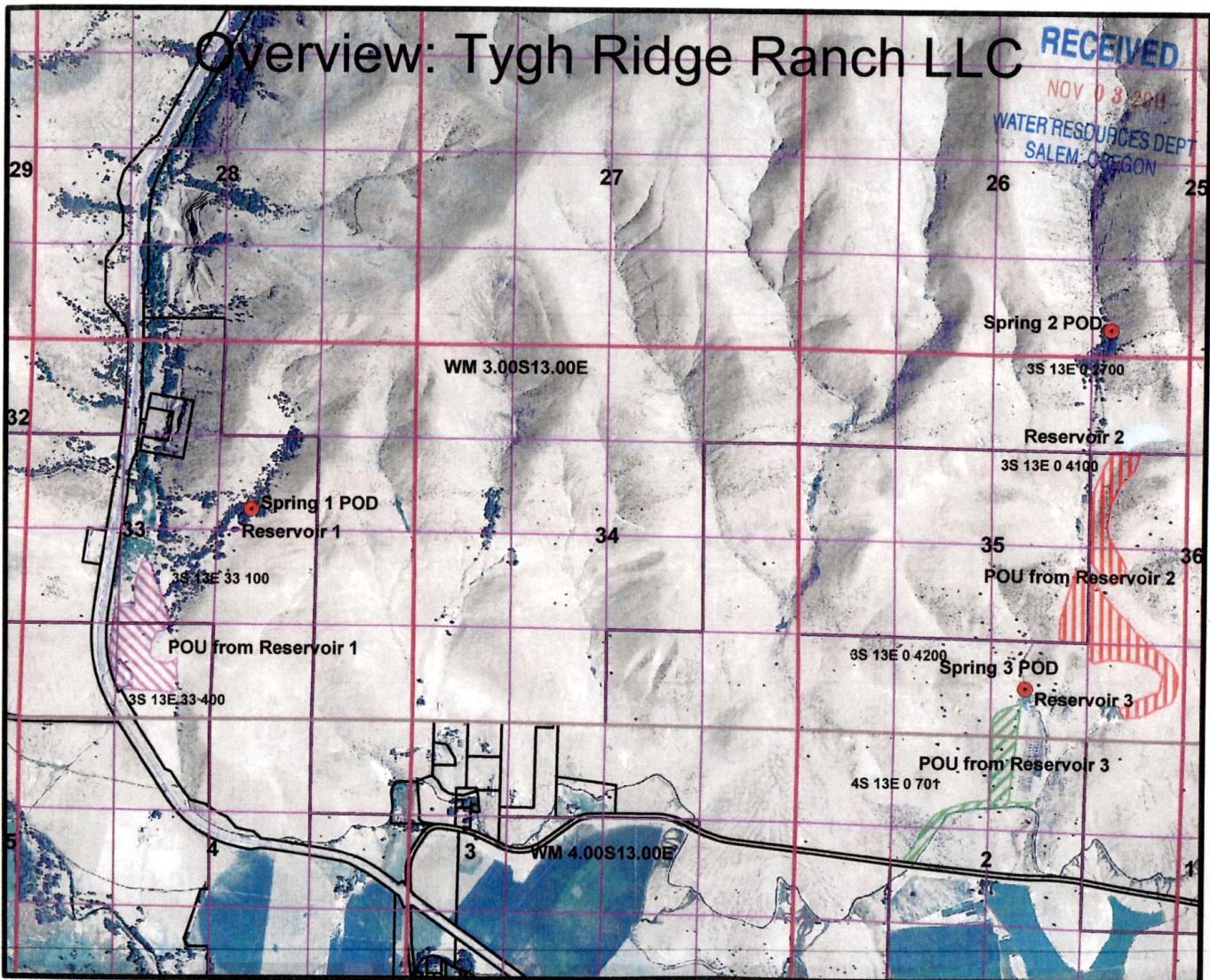


# Overview: Tygh Ridge Ranch LLC

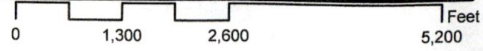
RECEIVED

NOV 03 2011

WATER RESOURCES DEPT  
SALEM, OREGON



507764





Davis: T3S R13E 0 Tax Lots 2700, 4100, 4200  
 T4S R13E 0 Tax Lots 500, 701



RECEIVED

NOV 03 2011

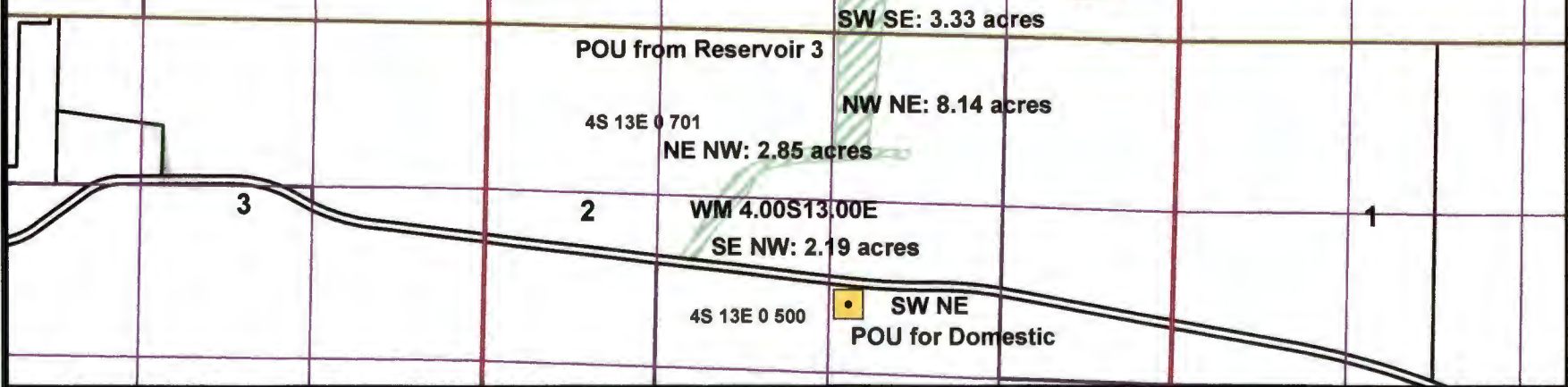
WATER RESOURCES DEPT  
 SALEM, OREGON

Spring 2 POD: Diversion is 351' North and  
 1,104' West of SE Corner Sec 26, T3S R13E WM

Reservoir 2: Centerpoint of dam is 1,221' south and  
 937' west of the NE Corner, Section 35, T3S R13E WM

Spring 3 POD: Diversion is 652' North and  
 2,226' West of SE Corner Sec 35, T3S R13E WM

Reservoir : Reservoir is 436' North and  
 2,174' West of the SE Corner, Section 35, T3S R13E WM



5978-5

Scale: 1" = 1320'

Davis: T3S R13E 0 Tax Lots 2700, 4100, 4200  
 T4S R13E 0 Tax Lots 500, 701



RECEIVED

NOV 03 2011

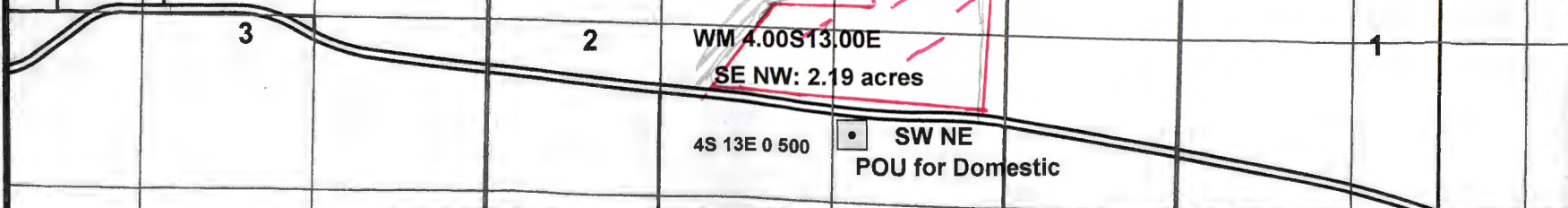
WATER RESOURCES DEPT  
 SALEM, OREGON

Spring 2 POD: Diversion is 351' North and  
 1,104' West of SE Corner Sec 26, T3S R13E WM

Reservoir 2: Centerpoint of dam is 1,221' south and  
 937' west of the NE Corner, Section 35, T3S R13E WM

Spring 3 POD: Diversion is 652' North and  
 2,226' West of SE Corner Sec 35, T3S R13E WM

Reservoir : Reservoir is 436' North and  
 2,174' West of the SE Corner, Section 35, T3S R13E WM



WM 3.00S13.00E

3S 13E 0 2700

SE SE

Spring 2 POD

NE NE

Reservoir 2

3S 13E 0 4100

SE NE: 11.4 acres

34

35

36

POU from Reservoir 2

NW SE: 7 acres

NE SE: 14.0 acres

*7.5 IS*  
*0.5 IR*

3S 13E 0 4200

Spring 3 POD

SE SE: 12.5 acres *IS*

Reservoir 3

SW SE: 3.33 acres

POU from Reservoir 3

4S 13E 0 701

NW NE: 8.14 acres

NE NW: 2.85 acres

3

2

1

WM 4.00S13.00E

SE NW: 2.19 acres

4S 13E 0 500

SW NE  
 POU for Domestic

h9718-5

Scale: 1" = 1320'

Davis: T3S R13E Sec 33 Tax Lots 100 and 400

RECEIVED

NOV 03 2011

WATER RESOURCES DEPT  
SALEM, OREGON



Tax Lot 100

SW NE

Reservoir 1 is 2,504' south and  
2,443' west of the NE Corner, Section 33.

- Spring 1 POD - 2,320' South and
- Reservoir 1 - 2,240' west of
- 0.50 acre-feet - NE Corner

Sec 33

32

33

WM 3.00S13.00E

34

3S 13E 33 100

NW SW: 0.30 acres

NE SW: 7.93 acres

Tax Lot 400

POU from Reservoir 1

SW SW: 1.60 acres

SE SW: 13.62 acres

3S 13E 33 400

5

4

WM 4.00S13.00E

3

5-87764

Scale: 1" = 800'