

TOWNSHIP 26 SOUTH, RANGE 5 WEST, WM
SW 1/4 SW 1/4 SECTION 19

DOUGLAS COUNTY OREGON

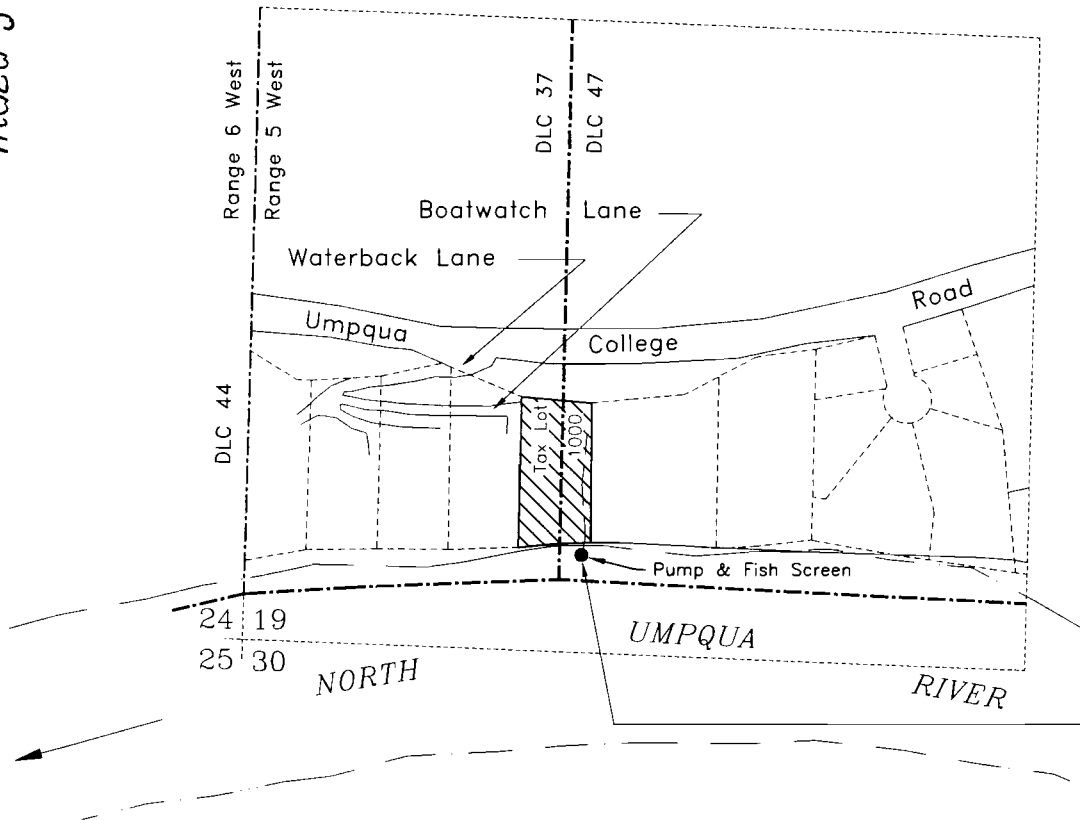
APPLICATION FOR DOMESTIC USE
EXPANDED

IN THE NAME OF:

LIDO, LLC
c/o David Leonard
P.O. Box 605
Winchester, OR 97495

Scale

1 inch = 400 feet

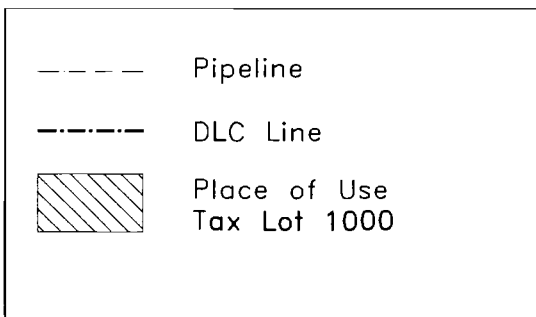


POD - 200 feet north and 700 feet east from the SW corner section 19, being within the SW/SW section 19 and in DLC 47.

RECEIVED BY OWRD

JUL 24 2012

SALEM, OR



Base map - Tax Assessor Map over
2005 FSA Aerial Photo & 2010 Google Aerial
Photo for assumed best fit

This map is not intended to provide legal
dimensions or locations of property ownership lines

JORDAN ENGINEERING
460 JORDAN LANE
ROSEBURG, OR 97471
(541) 673-1931

6/12/2012 n.e.d.