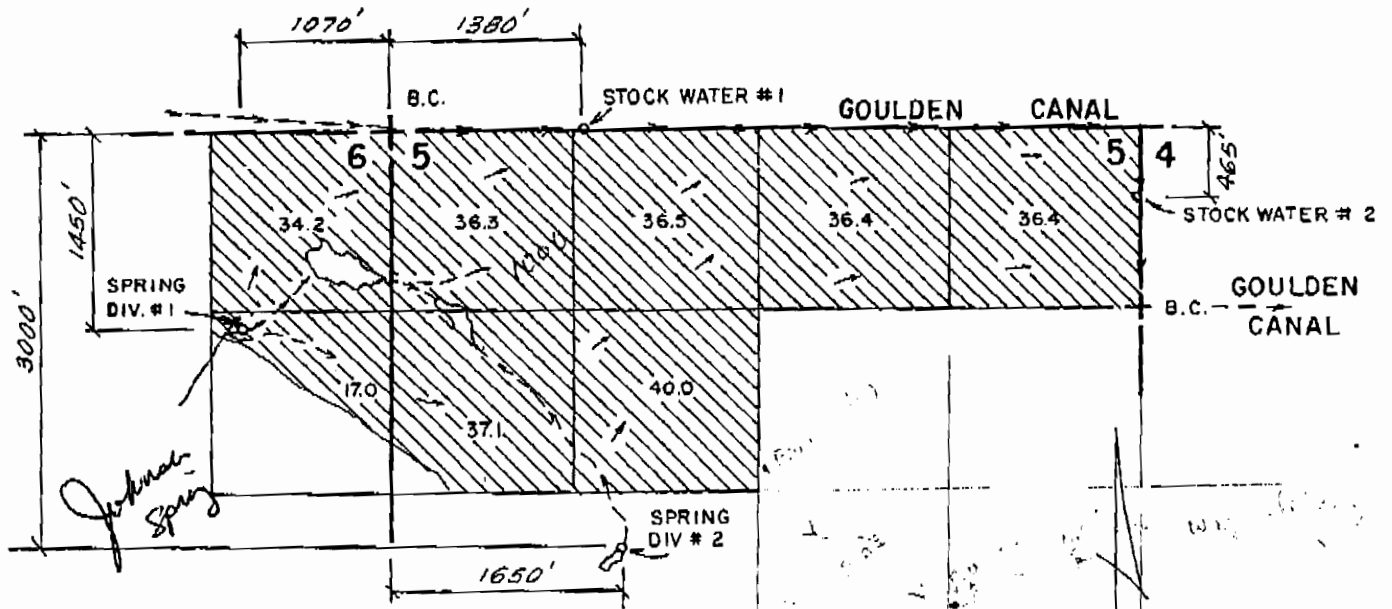


Aug. 14, 2009  
Appl. # 87508

# T27S, R29E WM



5.10 for m  
study

Steve Olson  
c/o Jones & Roth PC  
300 SW Columbia St  
Bend 97702  
Suite 203

	<b>LYNN DEGUIRE</b> <span style="float: right;">BURNS, OR</span>		
	<h2>WATER RIGHT APPLICATION MAP</h2>		
	Scale: 4" = 1 mile	Date: <u>Sept 1990</u>	Job: <u>1252</u>
	Dsn: Drn: <u>CTP</u> Ckd:	<b>M. A. PALMER &amp; SONS, INC.</b> ENGINEERING & SURVEYING 254 N. Alder - Box 61 Burns, Oregon 97720	Sht. No. / of /

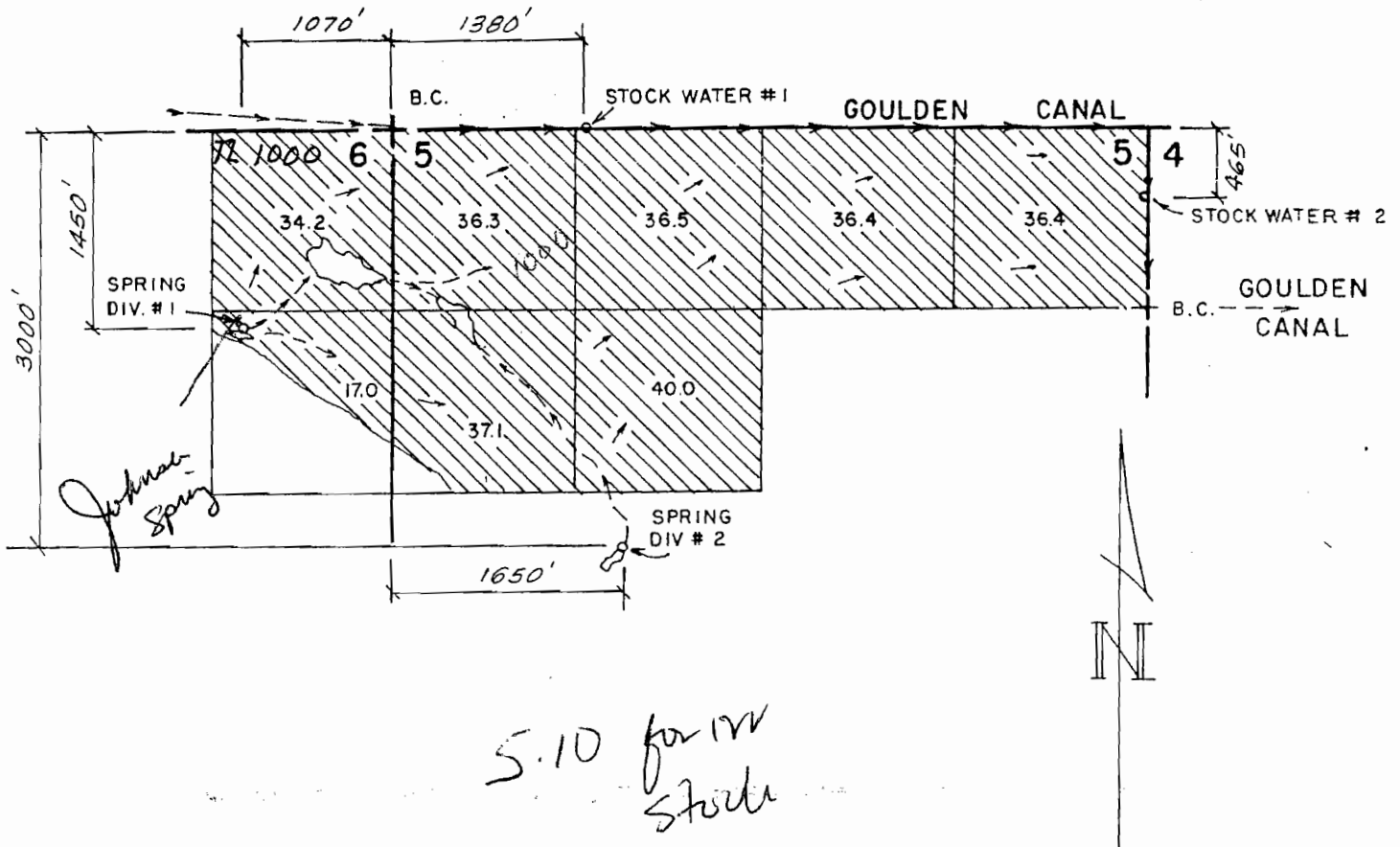
5-87508

RECEIVED

AUG 07 2009

WATER RESOURCES DEPT  
SALEM, OREGON

# T 27 S, R 29 E W M



*5.10 for NW  
Stock*

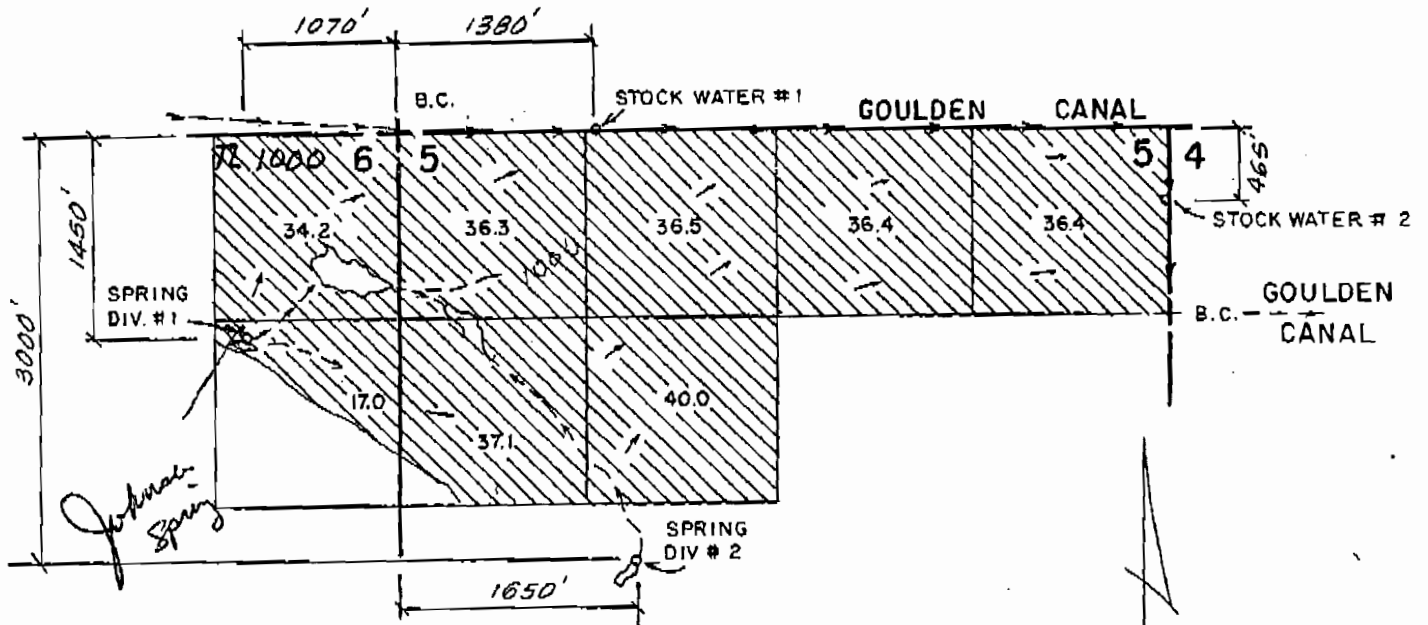
*Steve Olson  
% Jones & Roth PC  
300 SW Coleman St  
Bnd 97702  
Suite 203*

	LYNN DEGUIRE		BURNS, OR
	<h2>WATER RIGHT APPLICATION MAP</h2>		
	Scale: 4" = 1 mile	Date: <i>Sept 1990</i>	Job: 1252
	Dsn:		Sht. No. 1
Drn: CTP	of 1		
Ckd:			

RECEIVED

AUG 06 2009  
WATER RESOURCES DEPT  
SALEM, OREGON

# T27S, R29E WM



5.10 for 170  
Stock

Steve Olson  
o/o Jones & Roth PC  
300 SW Columbia St  
Bend 97702  
Suite 203



LYNN DEGUIRE BURNS, OR

## WATER RIGHT APPLICATION MAP

Scale: 4" = 1 mile	Date: Sept. 1990	Job: 1252
Dsn:	 M.A. PALMER & SONS, INC. ENGINEERING & SURVEYING 254 N. Alder - Box 81 Burns, Oregon 97720	Sht. No. 1
Drn: CTP		of 1
Ckd:		