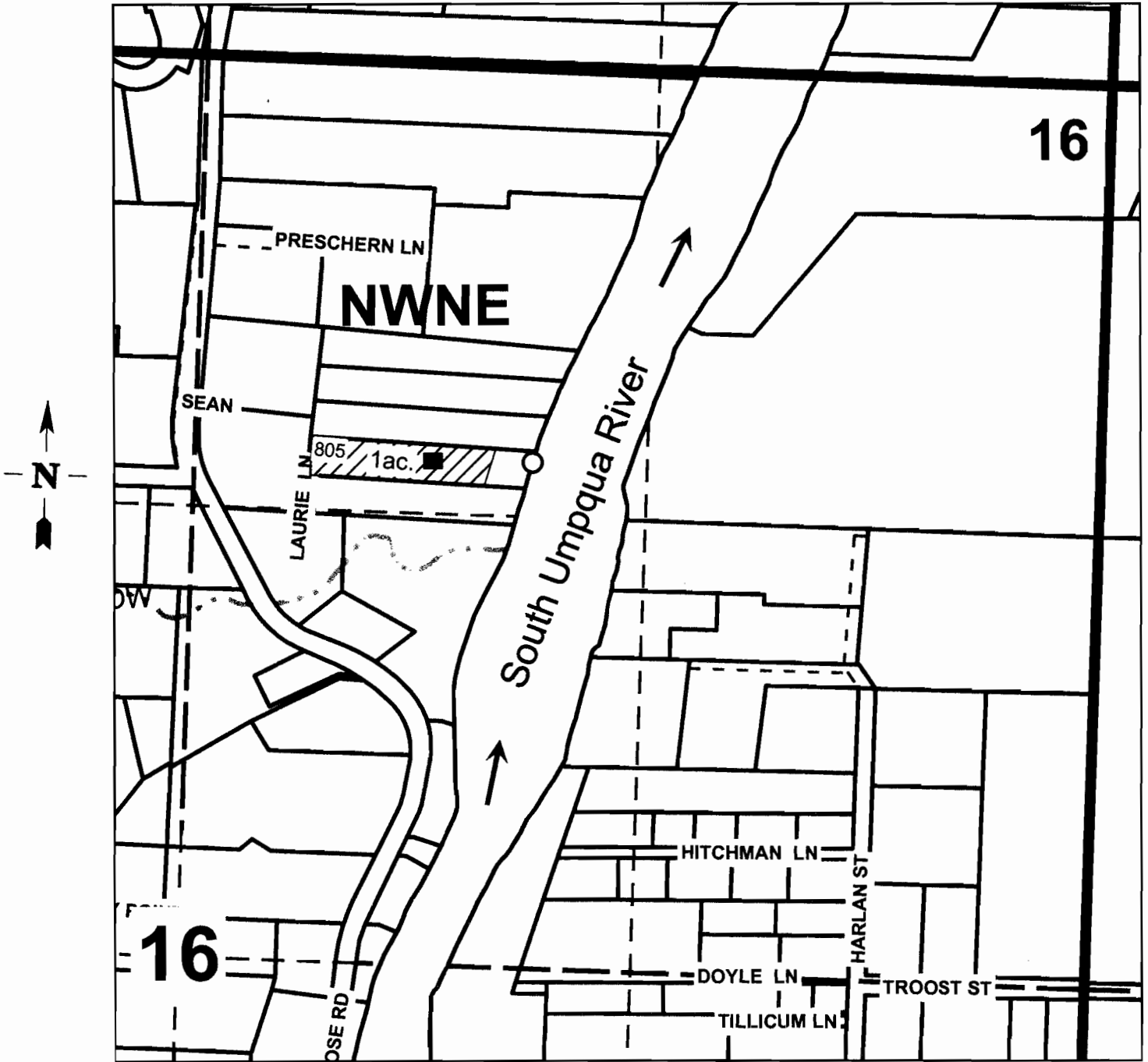


Application Map for
Harold & Loretta Fasig

NE 1/4 Sec. 16 T.27S. R.6W. W.M.
Douglas County
Scale 1" = 440'



Point of Diversion is 1,130 ft. south and 1,650 ft. west from
the NE corner of Section 16.

RECEIVED BY OWRD

JUN 19 2013

SALEM, OR

S-87909