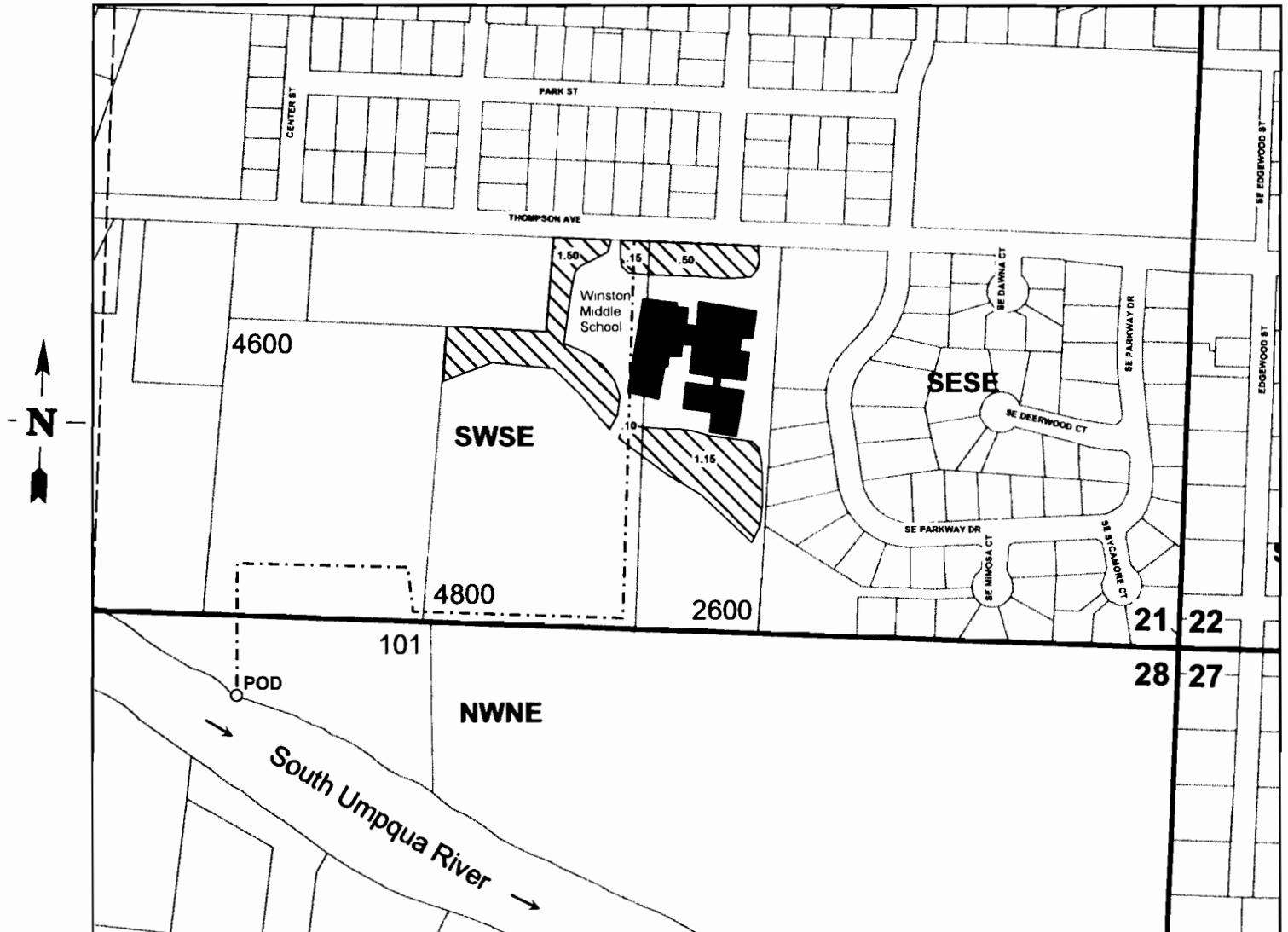
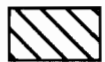


Application Map for Winston-Dillard School District Douglas County Scale 1" = 400'

T. 28S. R. 6W. W.M.



Point of Diversion (POD) is 140 ft. south and 2290 ft. west from the NE Corner of Section 28.



Proposed irrigation area - 3.40 acres

RECEIVED BY OWRD

SEP 18 2013

SALEM, OR

APP 5 87933