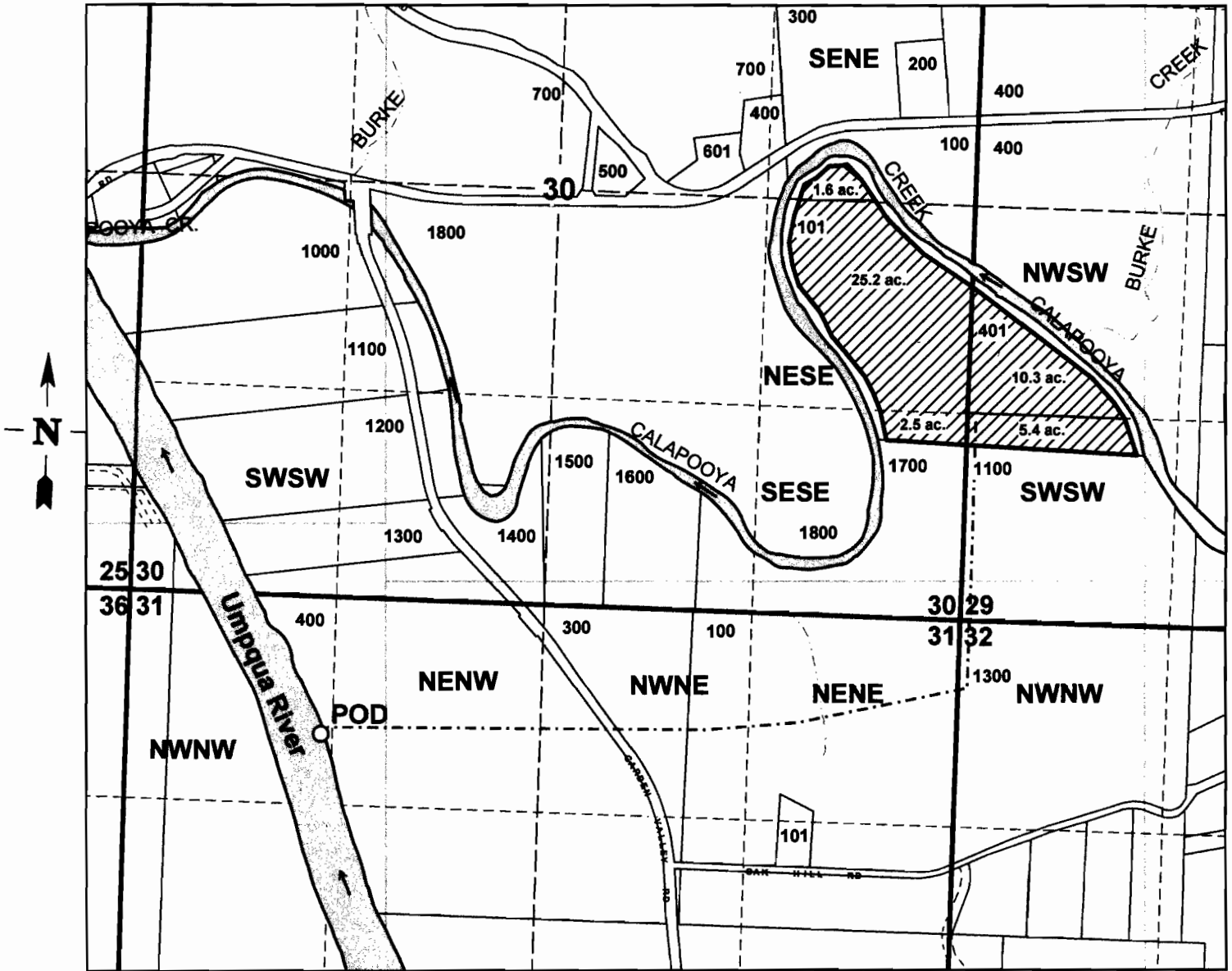


SECTIONS. 29, 30 & 31 T.25S. R.6W. W.M.  
 DOUGLAS COUNTY  
 Scale 1" = 1000'  
 Paul & Sandy Norris Application Map



Point of Diversion is 900 ft. South and 1240 ft. East from the NW Corner of Section 30.

S-87706

**RECEIVED**

MAR 14 2011

WATER RESOURCES DEPT  
 SALEM, OREGON