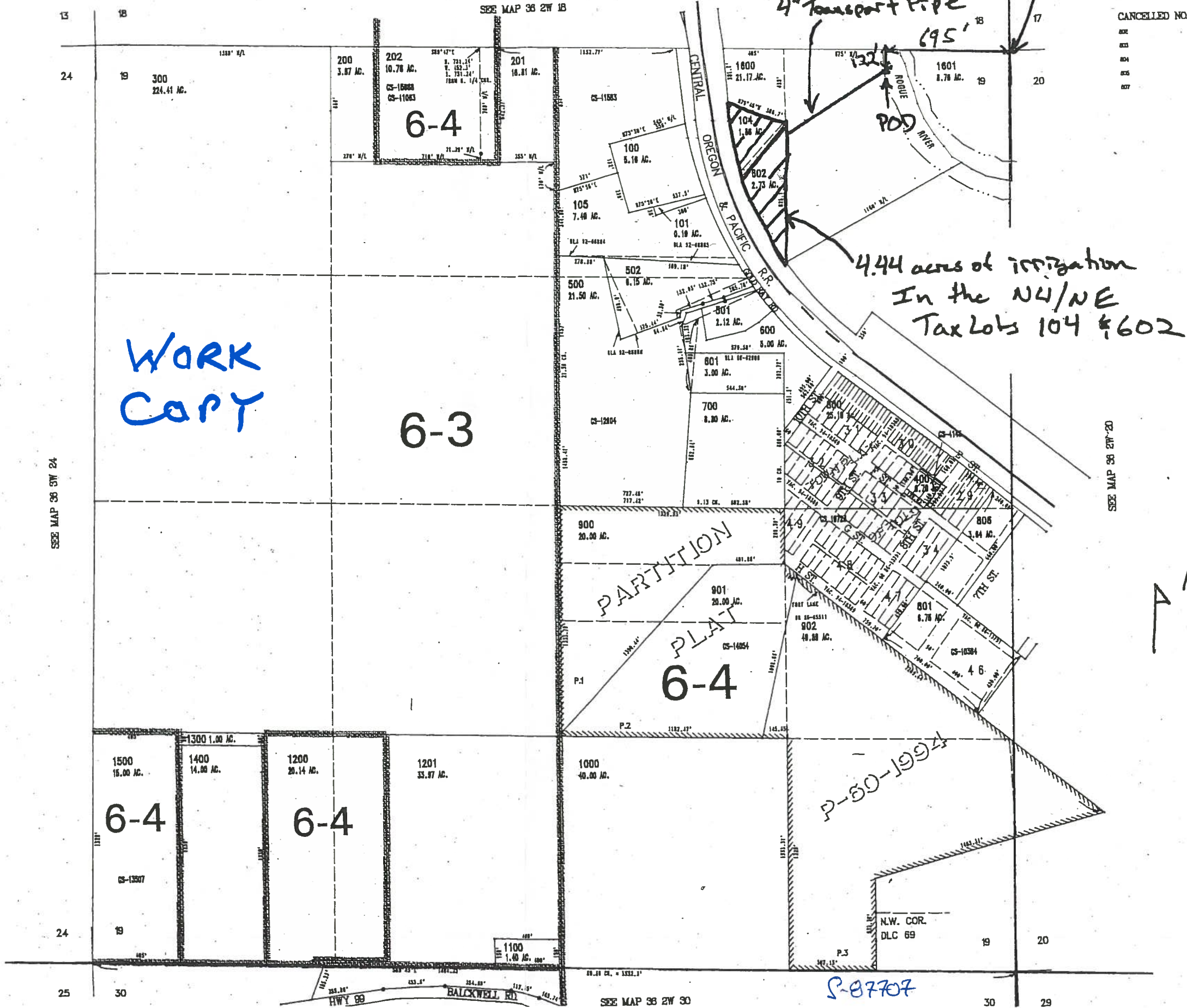


THIS MAP WAS PREPARED FOR ASSESSMENT PURPOSE ONLY

JACKSON COUNTY

Revised Corrected
Approx SCALE
1" = 600 FEET

Reference
Corner



CANCELLED NO.
 82
 83
 84
 85
 87

WORK
COPY

4.44 acres of irrigation
In the NW/NE
Tax Lots 104 & 602

PARTITION
PLAT
6-4

P-50-1994

S-87707

A N.

RECEIVED
 MAR 21 2011
 WATER RESOURCES I
 SALEM, OREGON

SEE MAP 36 SW 24

SEE MAP 36 SW 20

SEE MAP 36 2W 18

SEE MAP 36 2W 30