

T 17 S, R 3 W Section 24

3³ ac in SE, NW

4⁷ ac in NE, SW

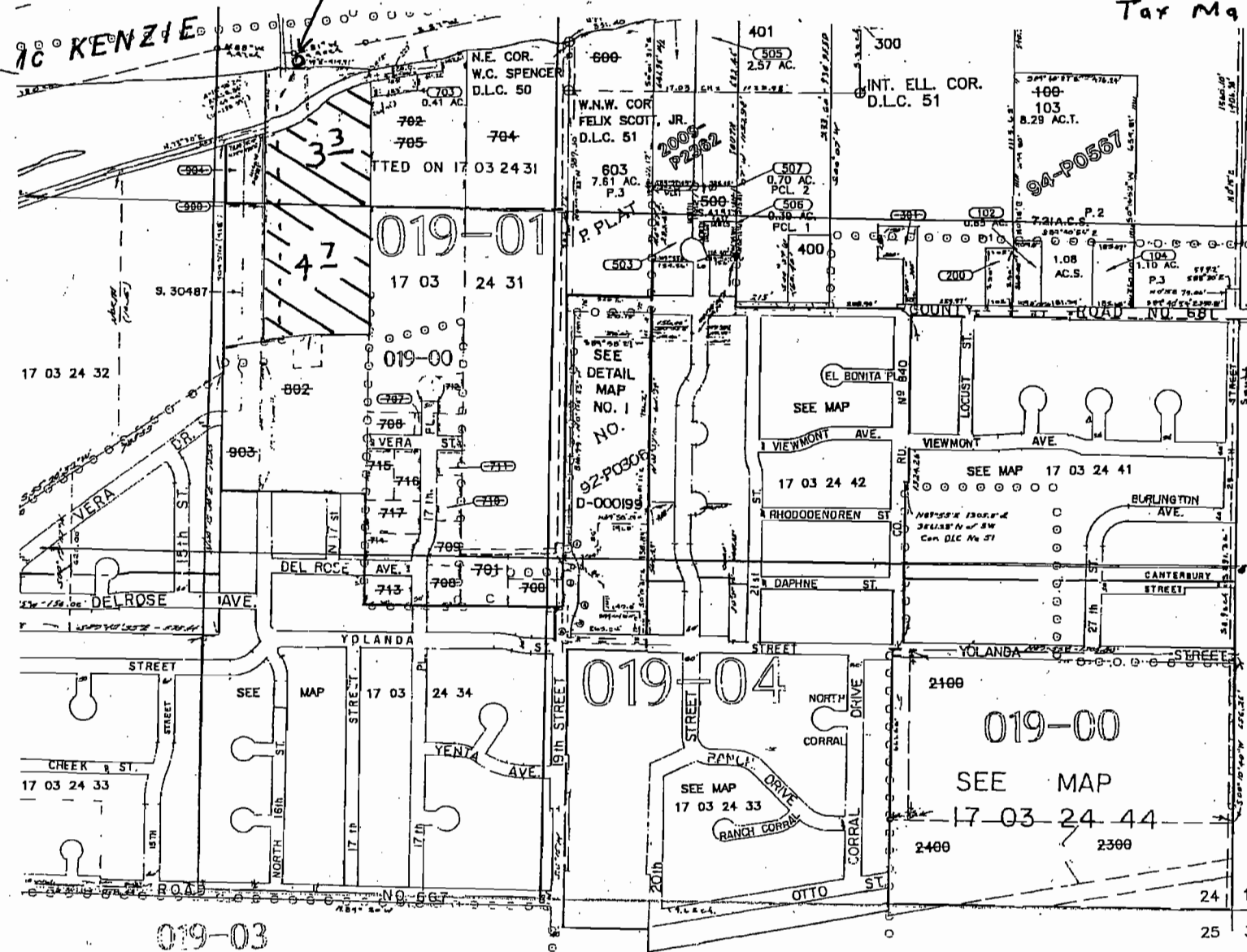
POD 90' N & 1015' W from WNW cor DLC 51

Tax lot 00400

Tax Map 170324 31

S-87674

McSivers 3289 1/2th, Springfield, OR 97477



↑ N ↓
1" = 600'

RECEIVED
JAN 03 2011
WATER RESOURCES DEPT
SALEM, OREGON