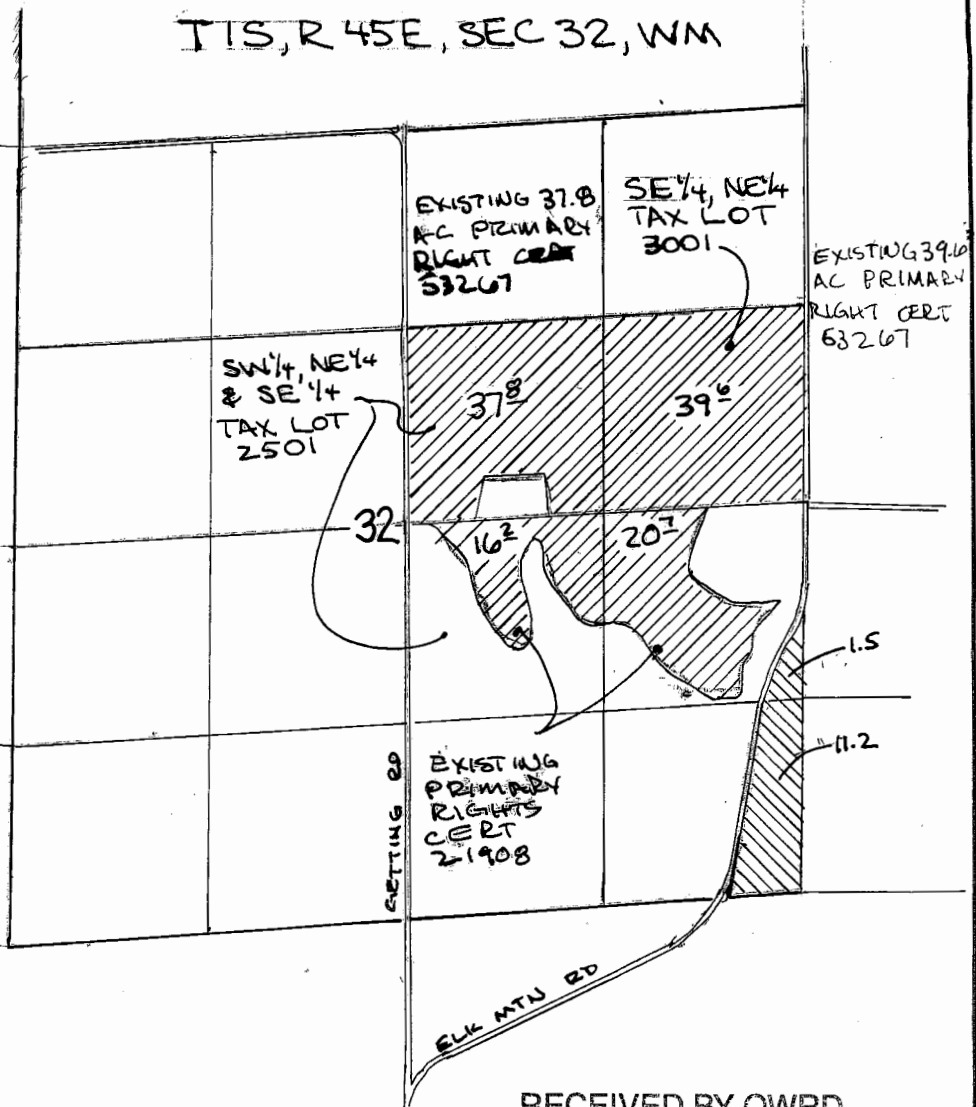


T15, R45E, SEC 32, WM



1" = 1320'

T15, R45E, SEC 32





RECEIVED BY OWRD

JAN 27 2014

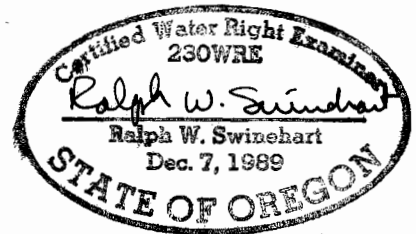
SALEM, OR

POINT OF DIVERSION FOR FARMERS DITCH IS WALLONA LAKE DAM, 940' S, 1500' E FROM THE NW CORNER OF SEC 5, T35, R45E, W.M.

-  LAND REQUESTING PRIMARY STORED WATER RIGHTS, 12.7 AC
-  LAND REQUESTING SUPPLEMENTAL STORED WATER RIGHTS

SOURCE OF WATER IS WATER STORED IN WALLONA LAKE UNDER R-347, CERTIFICATE 9310, PRIORITY DATE 1/9/1915

THIS MAP IS BASED ON USGS QUAD MAP AND PREVIOUS WATER RIGHTS, IT IS PREPARED FOR WATER RIGHT PURPOSES ONLY AND SHOULD NOT BE USED FOR PROPERTY LOCATION PURPOSES



RENEWS 6/30/14

WATER RIGHT APPLICATION MAP FOR: VZ FARMS ENTERPRISE, OREGON

PREPARED BY: WALLONA MOUNTAIN ENGINEERING PO BOX 266 ENTERPRISE, OREGON

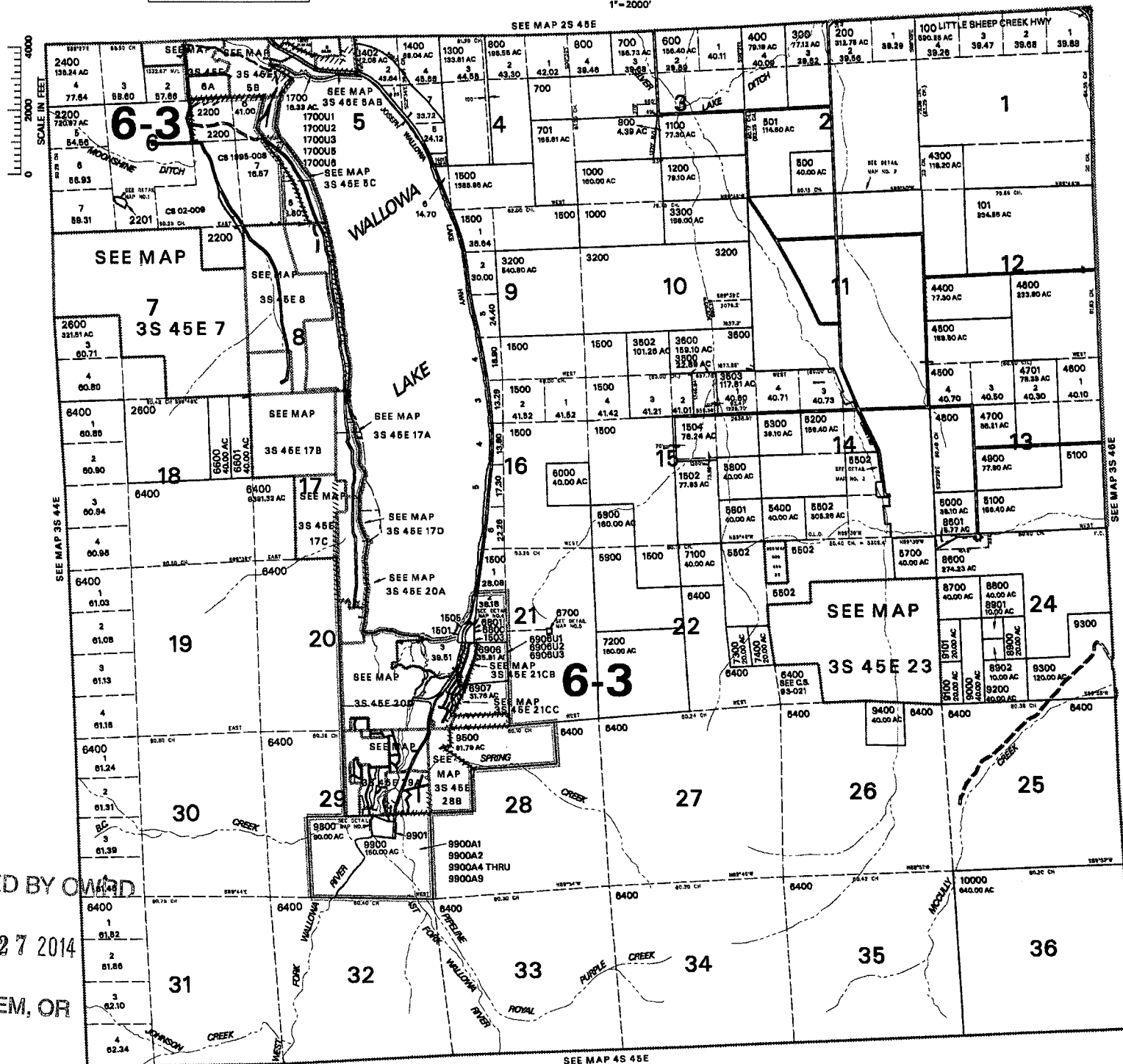
JAN 2014

THIS MAP WAS PREPARED FOR ASSESSMENT PURPOSE ONLY

T.03S. R.45E. W.M. WALLOWA COUNTY

1"=2000'

03S 45E & INDEX



- CANCELLED NO.
- 1700U4
 - 1701U1 THRU
 - 1700U3
 - 1701U5
 - 1701U8
 - 1800
 - 1800 THRU
 - 1802
 - 2000 THRU
 - 2012
 - 2089
 - 2100
 - 2300
 - 2700 THRU
 - 2738
 - 2800 THRU
 - 2809
 - 2900 THRU
 - 3105
 - 3504
 - 4000
 - 4101
 - 4203
 - 5101
 - 5301
 - 8100 THRU
 - 8107
 - 8200 THRU
 - 8300 THRU
 - 8313
 - 8800 THRU
 - 8802
 - 8900 THRU
 - 8905
 - 7000 THRU
 - 7002
 - 7500 THRU
 - 8500
 - 8802
 - 8901 THRU
 - 9509
 - 9500
 - 9700 THRU
 - 9702

RECEIVED BY OWARD

JAN 27 2014

SALEM, OR

PRINTED ON 03/22/12

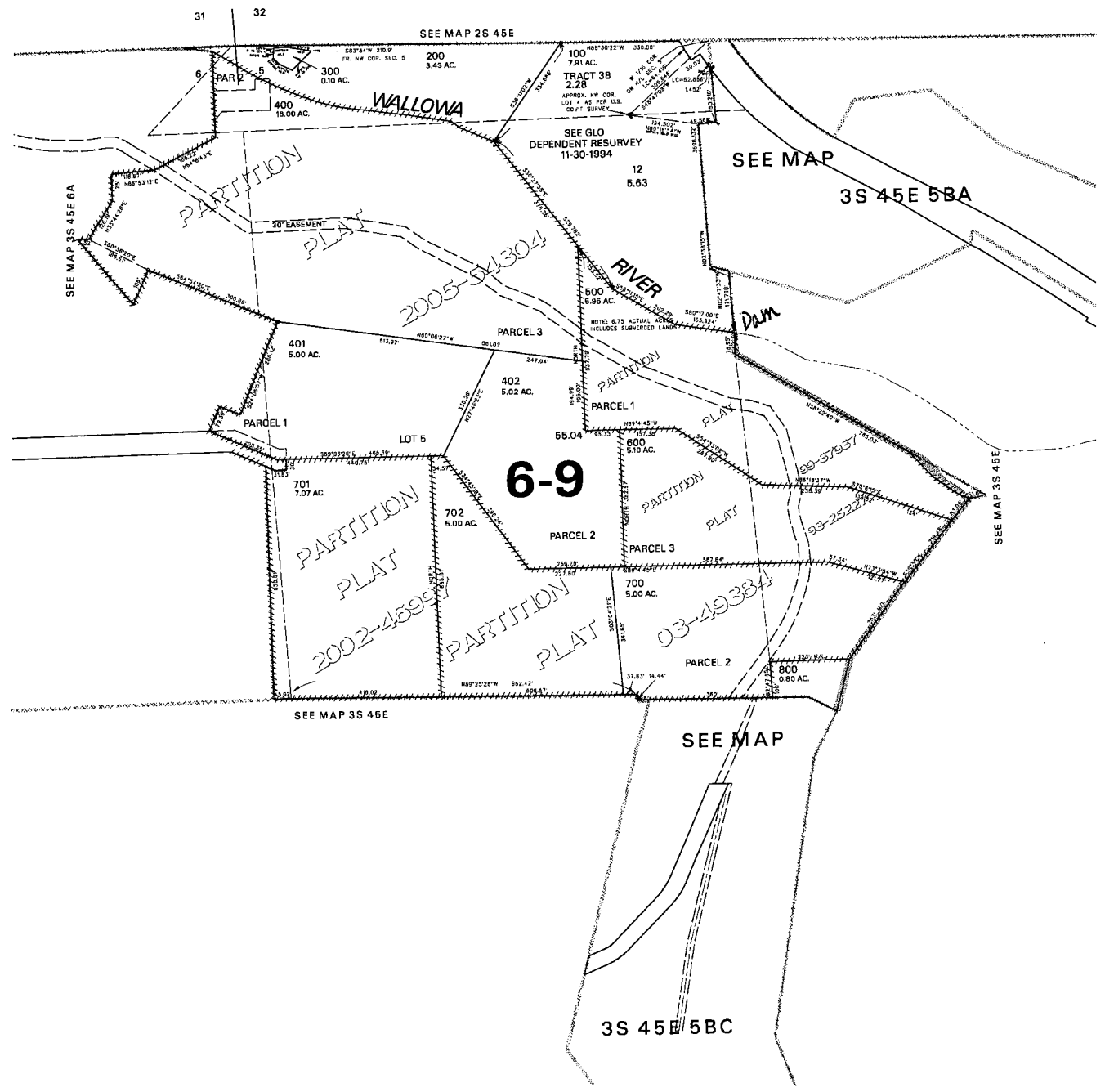
03S 45E & INDEX

THIS MAP WAS PREPARED FOR
ASSESSMENT PURPOSE ONLY

NW1/4 SECTION 05 T.03S. R.45E. W.M.
WALLOWA COUNTY

1"=200'

03S 45E 05B
& INDEX



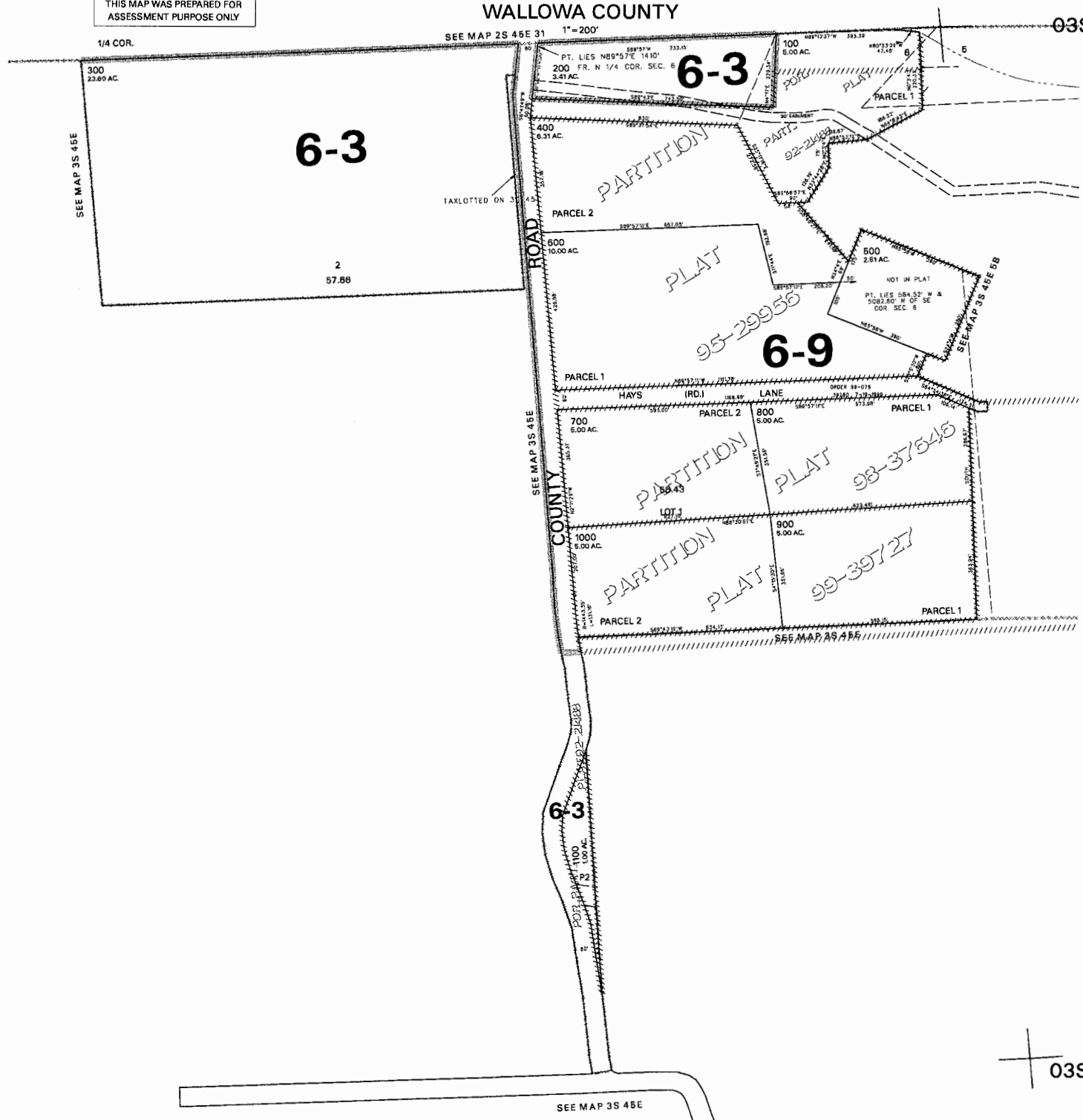
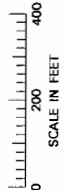
RECEIVED BY OWRD
JAN 27 2014
SALEM, OR

PRINTED ON
09/20/08
03S 45E 05B
& INDEX

NE1/4 SECTION 06 T.03S. R.45E. W.M.
WALLOWA COUNTY

THIS MAP WAS PREPARED FOR
ASSESSMENT PURPOSE ONLY

03S 45E 06A



SEE MAP 3S 45E

SEE MAP 2S 45E 31 1"=200'

SEE MAP 3S 45E

SEE MAP 3S 45E

SEE MAP 3S 45E

SEE MAP 3S 45E 08

RECEIVED BY OWRD

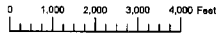
JAN 27 2014

SALEM, OR

PRINTED ON
06/20/07

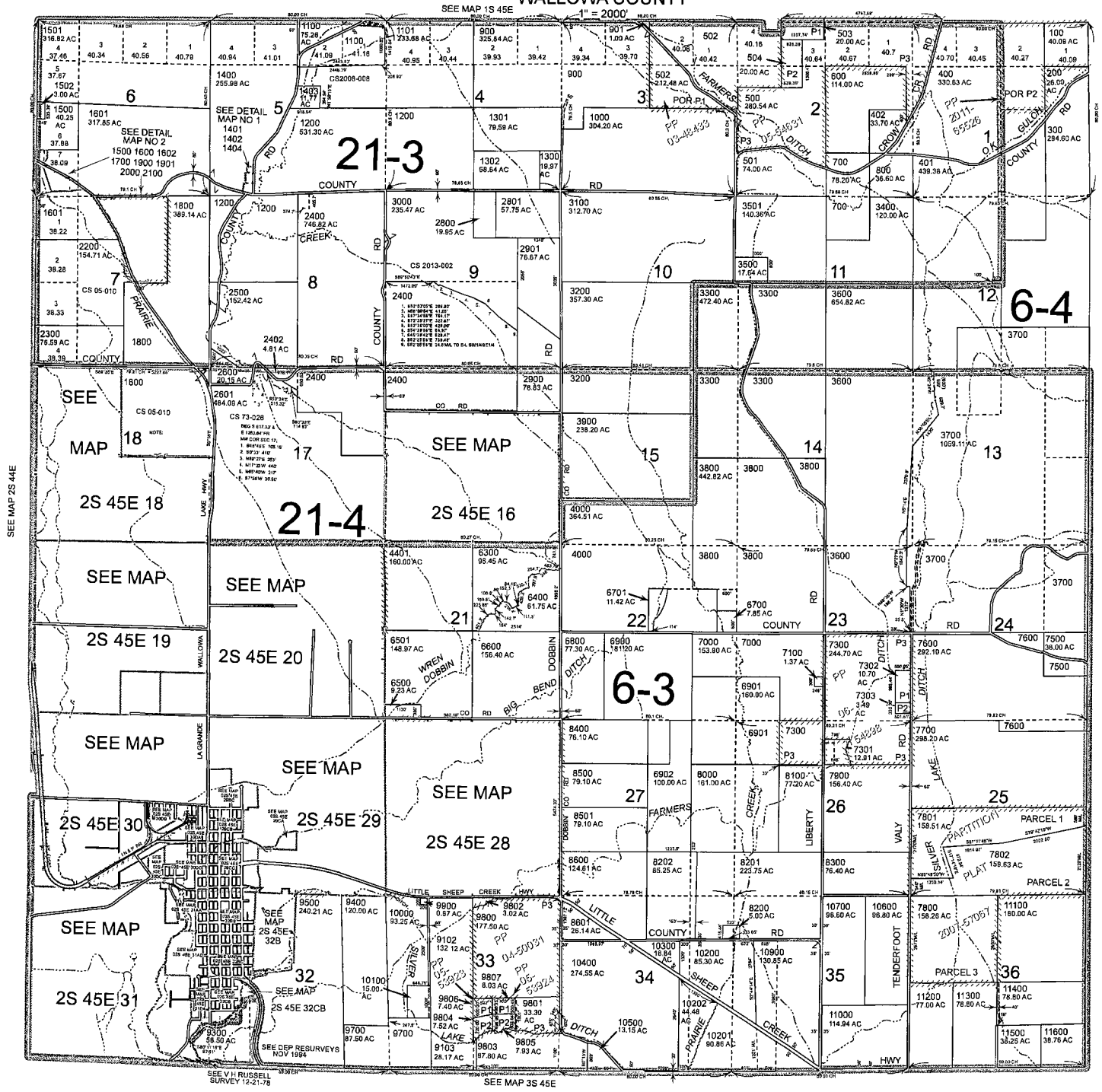
03S 45E 06A

THIS MAP WAS PREPARED FOR ASSESSMENT PURPOSE ONLY



T.2S. R.45E. W.M. WALLOWA COUNTY

02S45E & INDEX



- Cancelled
- 2401
- 1401
- 1404
- 1402
- 1600
- 1602
- 1700
- 1900
- 1601
- 2000
- 2100
- 2403
- 3701 thru
- 3706
- 4100 thru
- 4400
- 4500 thru
- 6207
- 6702
- 6703
- 7200
- 7400
- 8203
- 8700 thru
- 9101
- 9200
- 9600 thru
- 9606
- 10800
- 10901

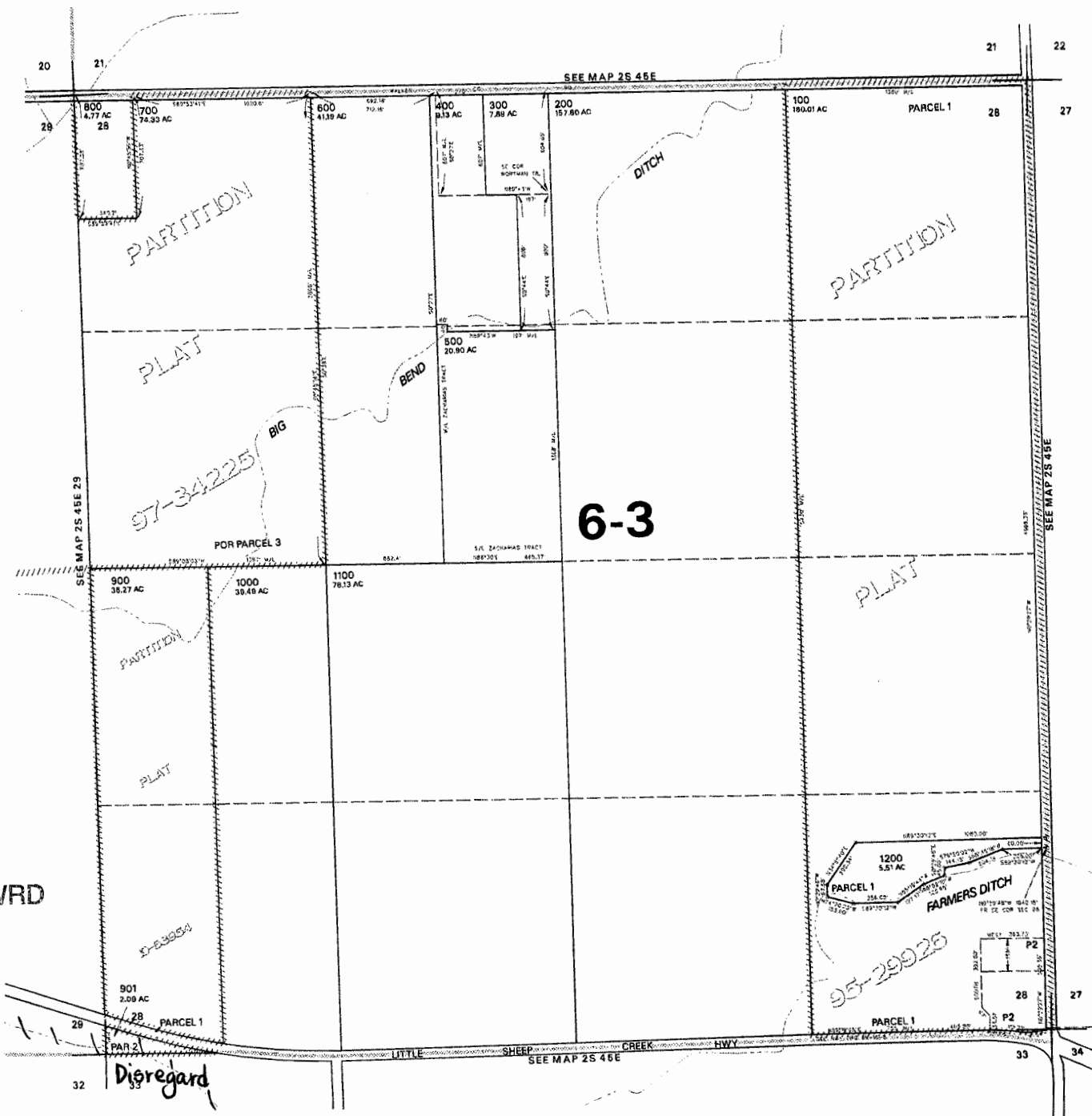
RECEIVED BY OWRD
JAN 27 2014
SALEM, OR

Revised: DBJ
09/04/2013
& INDEX
02S45E

THIS MAP WAS PREPARED FOR
ASSESSMENT PURPOSE ONLY

SECTION 28 T.02S. R.45E. W.M.
WALLOWA COUNTY
1"=400'

02S 45E 28
CANCELLED NO.



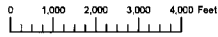
RECEIVED BY OWRD

JAN 27 2014

SALEM, OR

PRINTED ON
12/10/12
02S 45E 28

THIS MAP WAS PREPARED FOR ASSESSMENT PURPOSE ONLY

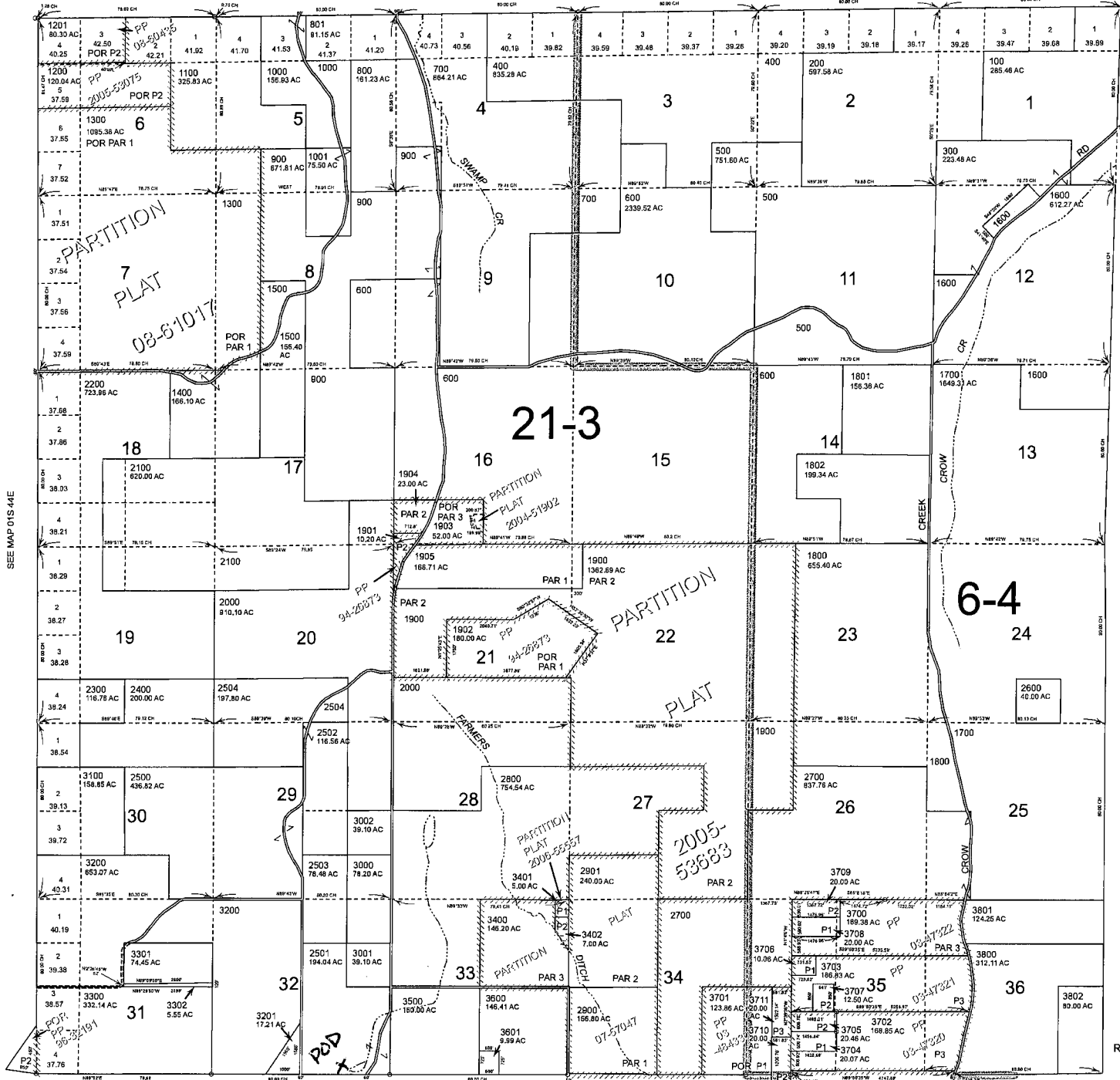


T.1S. R.45E. W.M. WALLOWA COUNTY

01S45E

SEE MAP 01N 45E

1" = 2000'



Cancelled 301 302 1601 1602

SEE MAP 01S 44E

SEE MAP 01S 46E

RECEIVED BY OWRD

JAN 27 2014

SALEM, OR

SEE MAP 02S 45E

Revised: converted 11/07/2013

01S45E