

950' S & 2430' E from
NW corner of Sec 5 T3S R45E WM

**T 1S
R 45E
Sec 33**

Legend

- New Primary Water Right Acres
- Diversion
- Taxlot
- Farmers Ditch
- Unchanged 3024 Priority Date 12/31/1900
- Removed due to ownership change, 47110 Priority Date 12/11/1975
- Unchanged 47110 Priority Date 12/11/1975 and new stored water acres applied for.
- Township Range
- Quarter Sections

RECEIVED BY OWRD

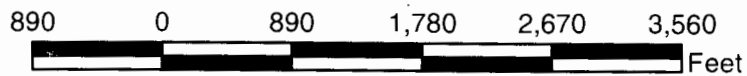
JAN 31 2014

SALEM, OR

RECEIVED BY OWRD

FEB 19 2014

SALEM, OR



S-8796

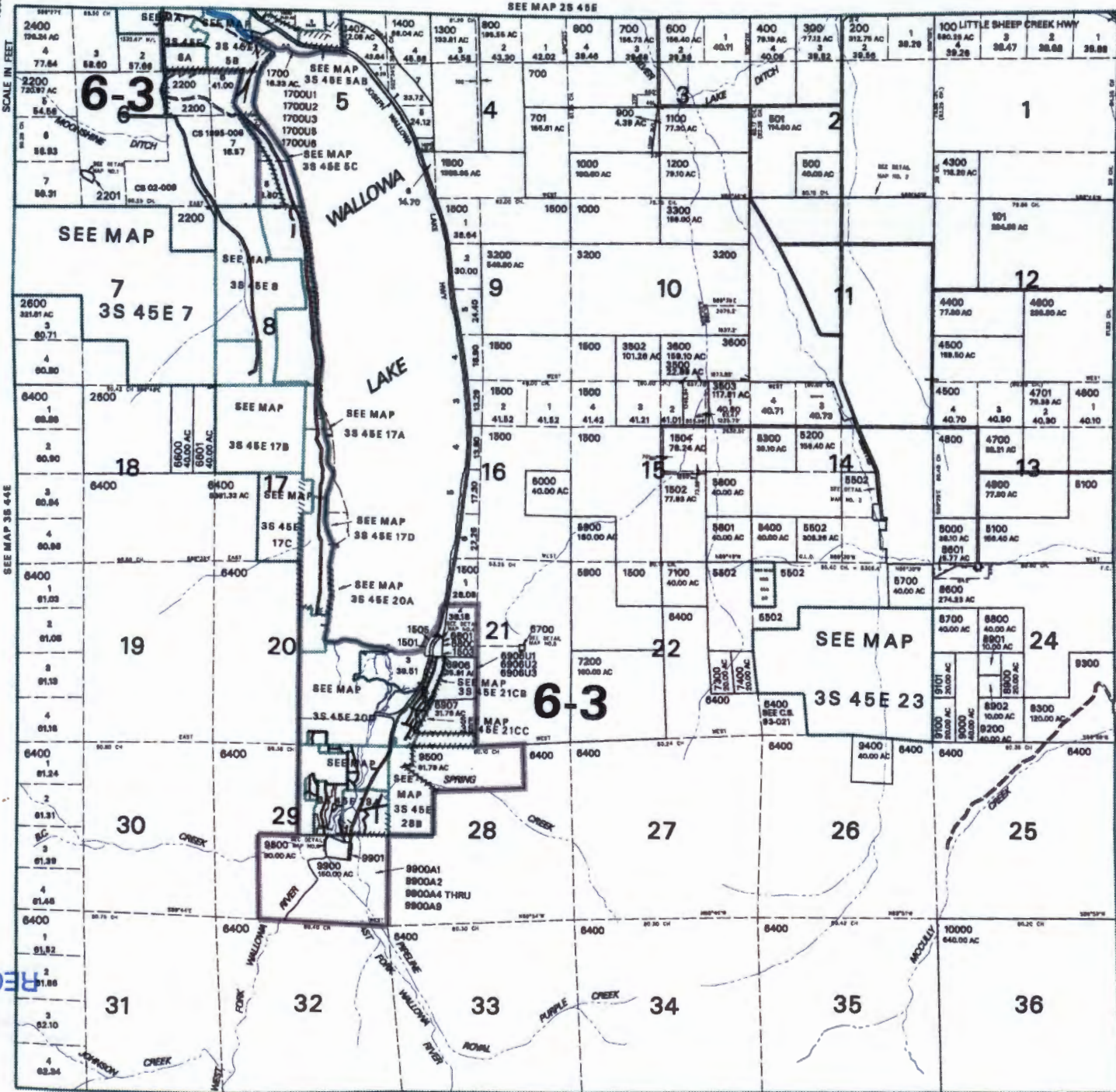
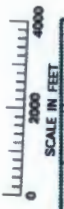
1"=1320'



THIS MAP WAS PREPARED FOR ASSESSMENT PURPOSE ONLY

T.03S. R.45E. W.M. WALLOWA COUNTY

1"=2000'



S-8764

03S 45E & INDEX

- CANCELLED NO.
- 1700U4
 - 1701U1 THRU
 - 1700U3
 - 1701U5
 - 1701U6
 - 1800
 - 1800 THRU
 - 1802
 - 2000 THRU
 - 2012
 - 2088
 - 2100
 - 2300
 - 2700 THRU
 - 2738
 - 2800 THRU
 - 2806
 - 2800 THRU
 - 3108
 - 3804
 - 4000
 - 4101
 - 4303
 - 8101
 - 8301
 - 8100 THRU
 - 8107
 - 8200 THRU
 - 8203
 - 8300 THRU
 - 8313
 - 8800 THRU
 - 8802
 - 8800 THRU
 - 8805
 - 7000 THRU
 - 7002
 - 7800 THRU
 - 8800
 - 8802
 - 8801 THRU
 - 8908
 - 9900
 - 9700 THRU
 - 9702

SALEM, OR

JAN 31 2014

RECEIVED BY OWRD

RECEIVED BY OWRD

SALEM, OR

FEB 19 2014

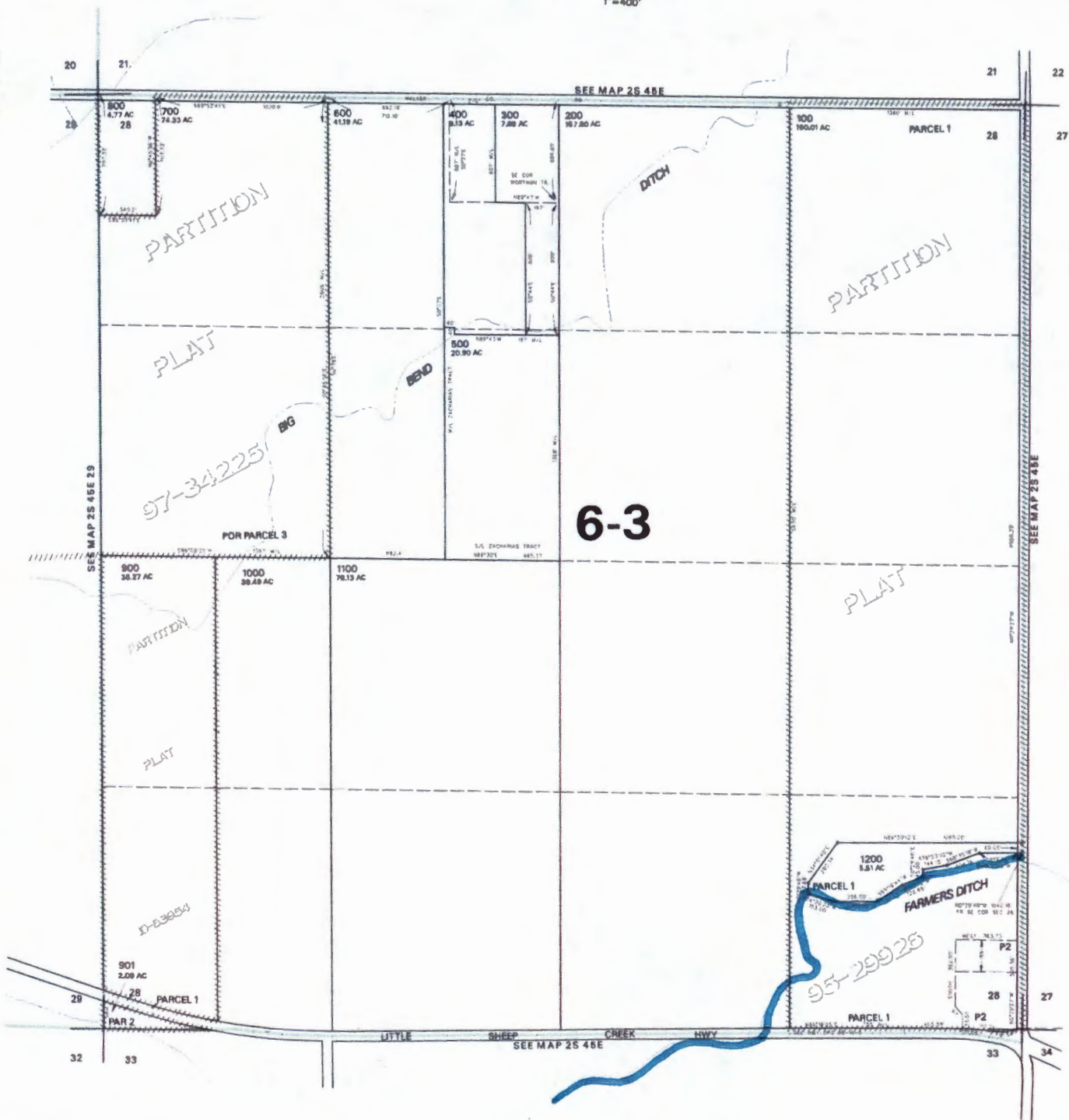
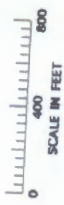
PRINTED ON 03/22/12

03S 45E & INDEX

THIS MAP WAS PREPARED FOR ASSESSMENT PURPOSE ONLY

SECTION 28 T.02S. R.45E. W.M.
WALLOWA COUNTY
1"=400'

02S 45E 28
CANCELLED NO.



6-3

PARTITION

PARTITION

PLAT

PLAT

PARTITION

PLAT

FARMERS DITCH

S-87961

97-34225

95-29926

D-63054

RECEIVED BY OWRD
RECEIVED BY OWRD

FEB 19 2014

JAN 31 2014

SALEM, OR

SALEM, OR

PRINTED ON
12/10/12

02S 45E 28

THIS MAP WAS PREPARED FOR ASSESSMENT PURPOSE ONLY



T.2S. R.45E. W.M.
WALLOWA COUNTY

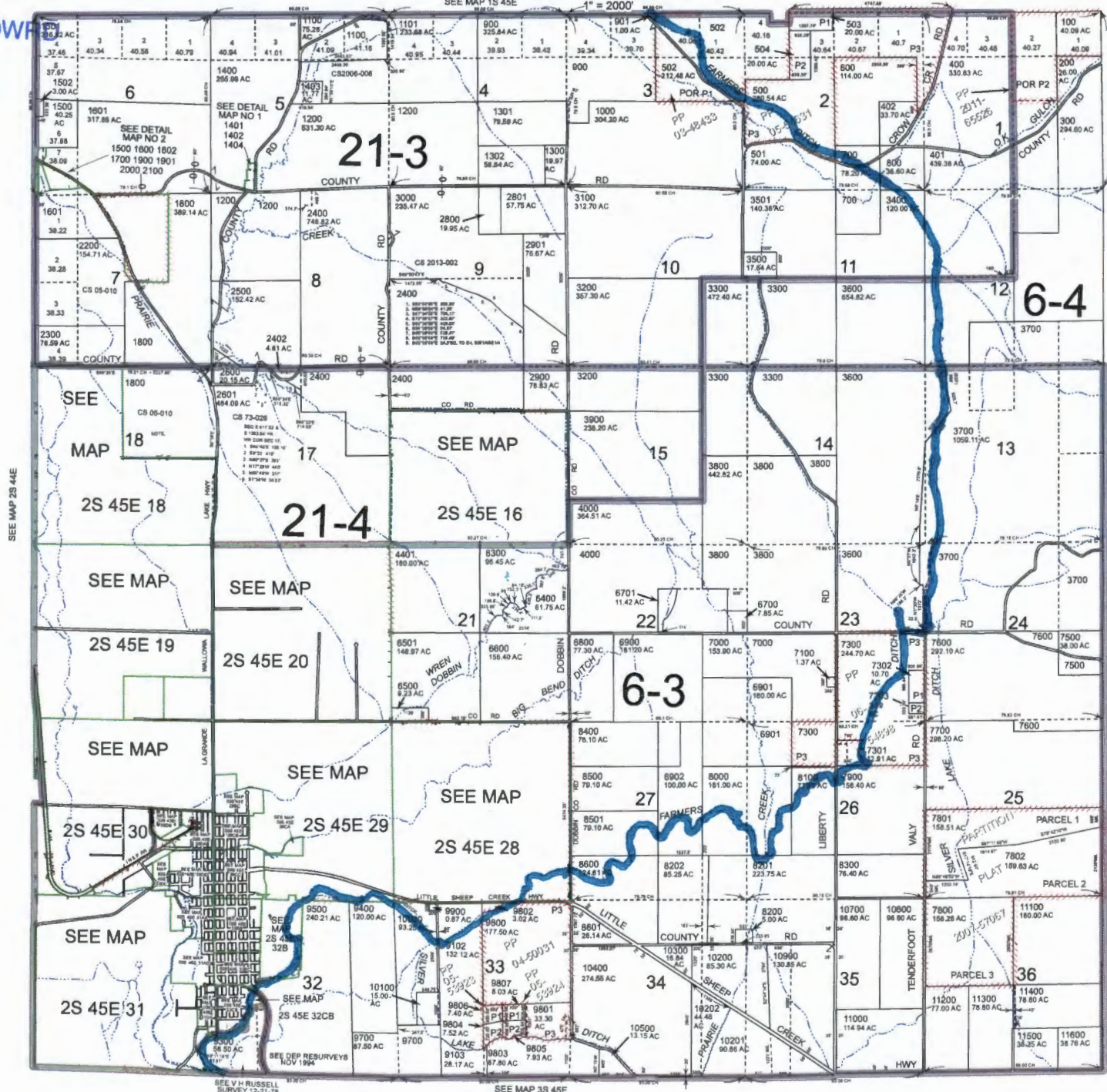
02S45E
& INDEX

RECEIVED BY OWPR

JAN 31 2014

SALEM, OR

Handwritten initials



- Cancelled
- 2401
- 1401
- 1404
- 1402
- 1600
- 1602
- 1700
- 1800
- 1801
- 2000
- 2100
- 2403
- 3701 thru
- 3708
- 4100 thru
- 4400
- 4500 thru
- 6207
- 6702
- 6703
- 7200
- 7400
- 8203
- 8700 thru
- 9101
- 9200
- 9500 thru
- 9508
- 10800
- 10901

RECEIVED BY OWPR

FEB 19 2014

SALEM, OR

Revised: DBJ
09/04/2013

& INDEX
02S45E

THIS MAP WAS PREPARED FOR ASSESSMENT PURPOSE ONLY

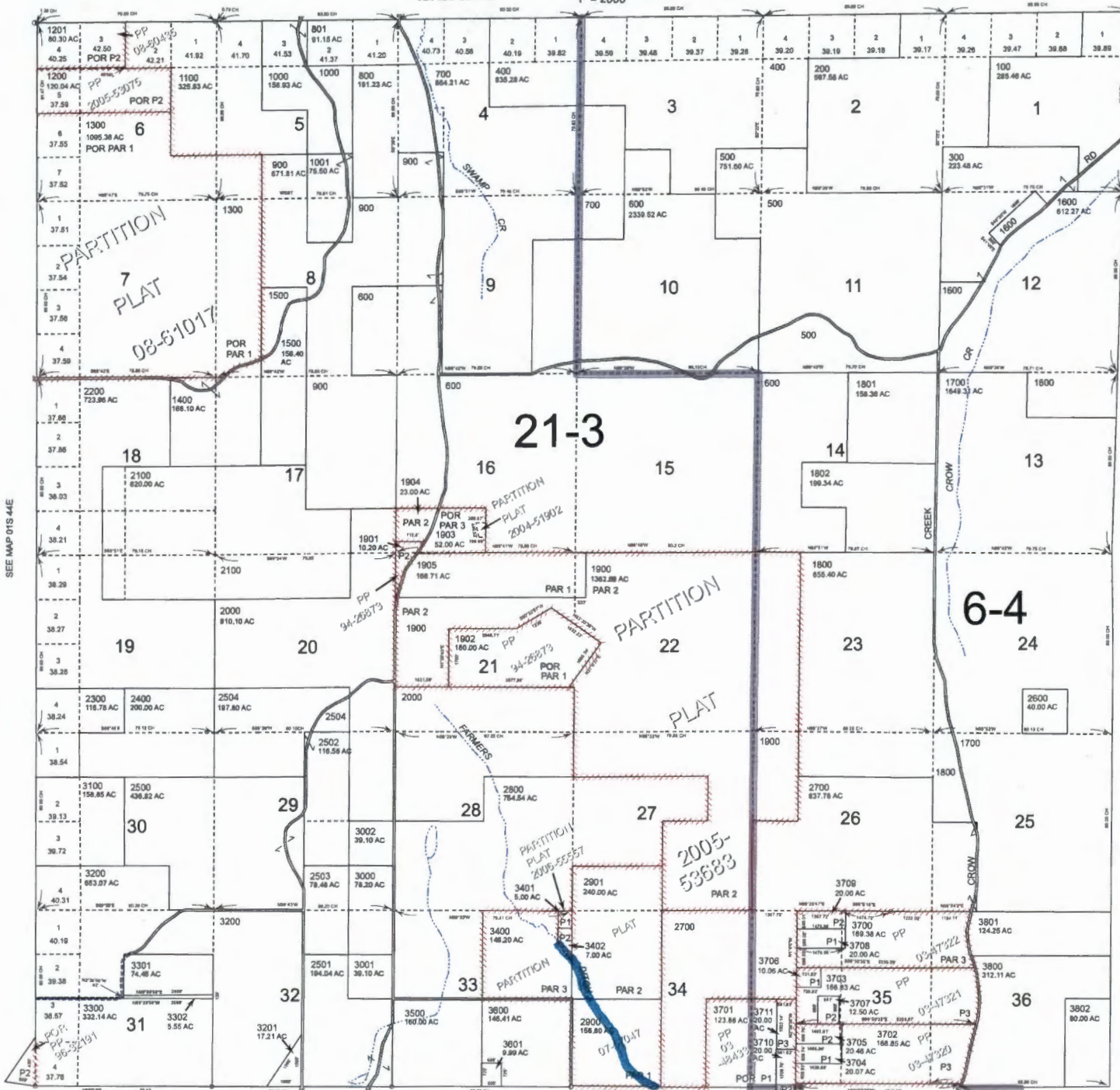


T.1S. R.45E. W.M. WALLOWA COUNTY

01S45E

SEE MAP 01N 45E

1" = 2000'



Cancelled
301
302
1601
1602

J-87264

RECEIVED BY OWRD

FEB 19 2014

SALEM, OR

RECEIVED BY OWRD

JAN 31 2014

SALEM, OR

SEE MAP 02S 45E

Revised: converted
11/07/2013

01S45E