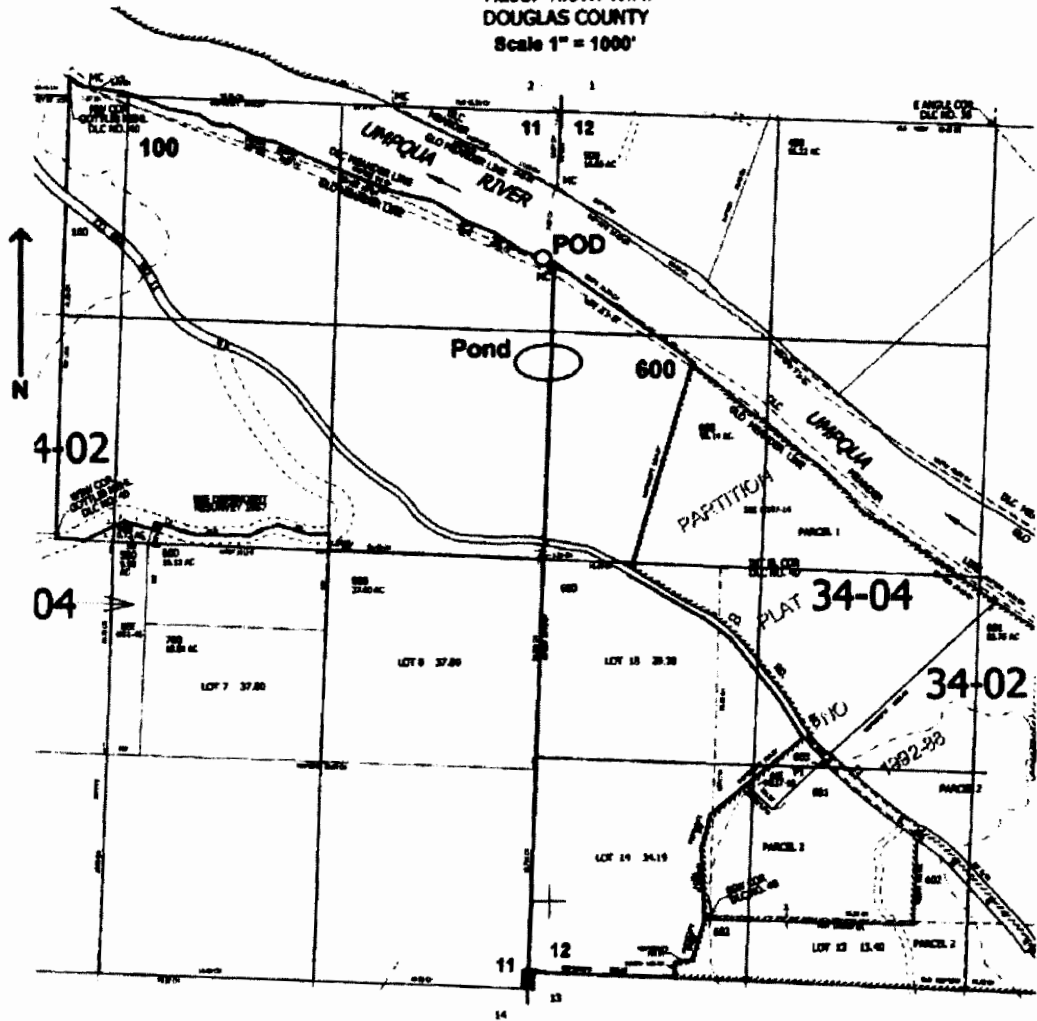


LA 11/25/19

T.23S. R.8W. W.M.
DOUGLAS COUNTY
Scale 1" = 1000'



POD is located 900 ft. S. and 50 ft. W. } from the NE corner of Sec. 11
Pond is located 1550 ft. S. }

RECEIVED
OCT 08 2004
WATER RESOURCES DEPT
SALEM, OREGON

RECEIVED BY OWRD

AUG 21 2014

SALEM, OR

2-88006