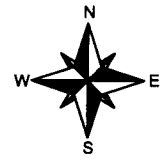


SURFACE WATER APPLICATION MAP

PREPARED FOR:
 JACKSON FAMILY INVESTMENTS III
 421 AVIATION BLVD
 SANTA ROSA, CA 95403



TL 100, Section 13
 T9S, R6W, WM
 POLK COUNTY, OREGON
 WILLAMETTE RIVER BASIN

LEGEND

- RESERVOIR
- 16TH LINE
- SECTION LINE
- DLC LINE
- IRRIGATION
- SECTION CORNER
- STREAM

PLACE OF USE SUMMARY

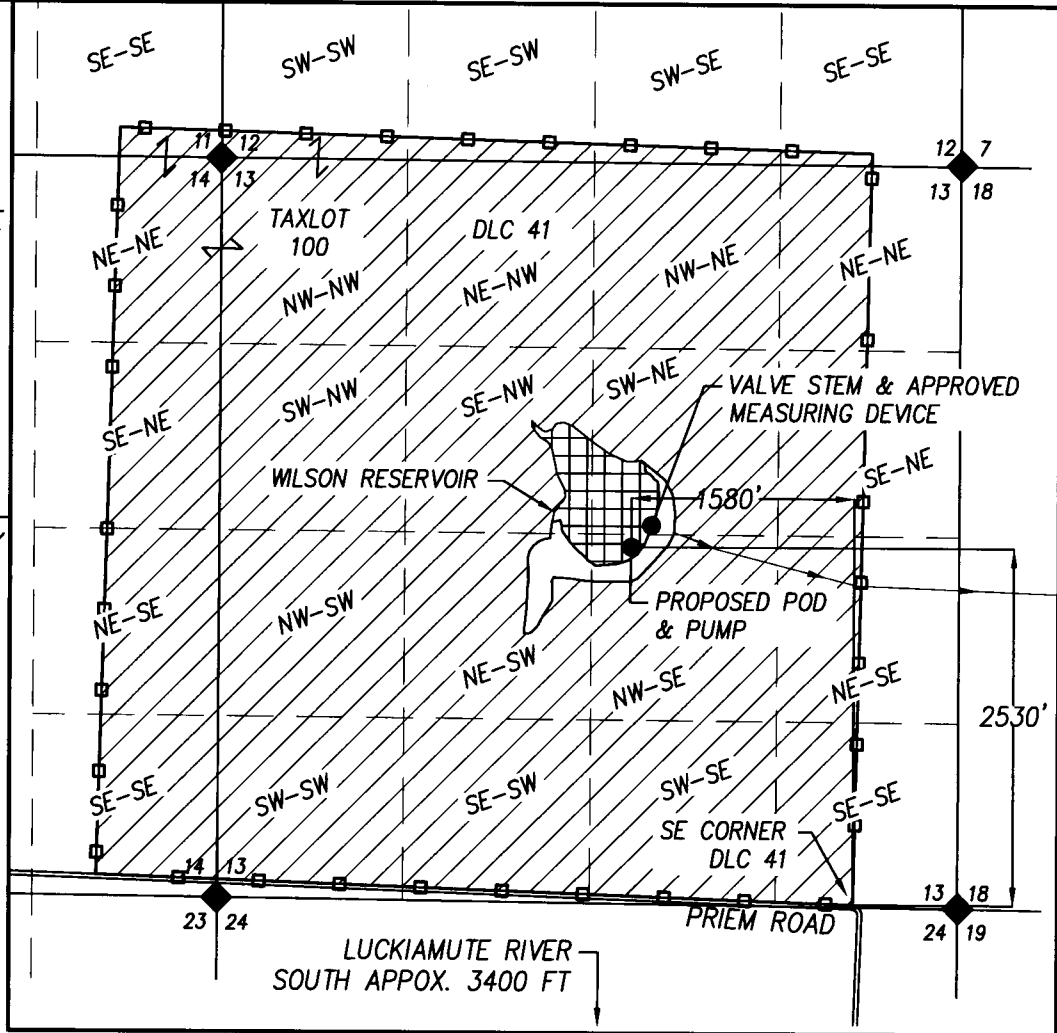
SECTION 11
 SE-SE - 3.4 AC

SECTION 12
 SW-SW - 5.3 AC
 SE-SW - 4.4 AC
 SW-SE - 3.6 AC
 SE-SE - 1.4 AC

SECTION 14
 NE-NE - 22.7 AC
 SE-NE - 23.8 AC
 NE-SE - 24.8 AC
 SE-SE - 22.4 AC

SECTION 13
 NW-NW - 39.9 AC
 NE-NW - 39.9 AC
 NW-NE - 39.9 AC
 NE-NE - 19.3 AC
 SW-NW - 40.0 AC
 SE-NW - 34.4 AC
 SW-NE - 33.2 AC
 SE-NE - 18.6 AC
 NW-SW - 39.9 AC
 NE-SW - 35.7 AC
 NW-SE - 36.4 AC
 NE-SE - 17.8 AC
 SW-SW - 35.8 AC
 SE-SW - 37.0 AC
 SW-SE - 38.1 AC
 SE-SE - 16.6 AC

TOTAL - 634.3

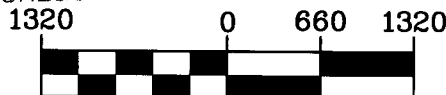


MAP BASE:
 POLK COUNTY TAX MAP 9S 6W 13
 GOOGLE EARTH AERIAL PHOTO
 BLM MASTER TITLE PLAT

RECEIVED

DEC 31 2014

WATER RESOURCES DEPT
 SALEM, OREGON



1 inch = 1320 ft.

THIS MAP WAS PREPARED FOR THE PURPOSE OF IDENTIFYING THE LOCATION OF A WATER RIGHT ONLY AND IS NOT INTENDED TO PROVIDE LEGAL DIMENSIONS OR LOCATION OF PROPERTY OWNERSHIP LINES.



Project: 313-004
 Drawing: MG_COBU.dwg
 By: DYLAN HITNER
 Checked by: ERIC URSTADT
 Date: 11-5-13